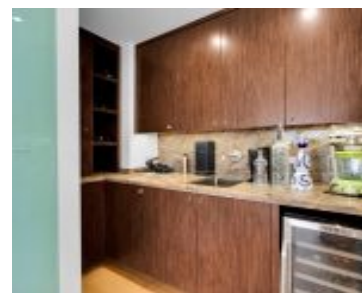
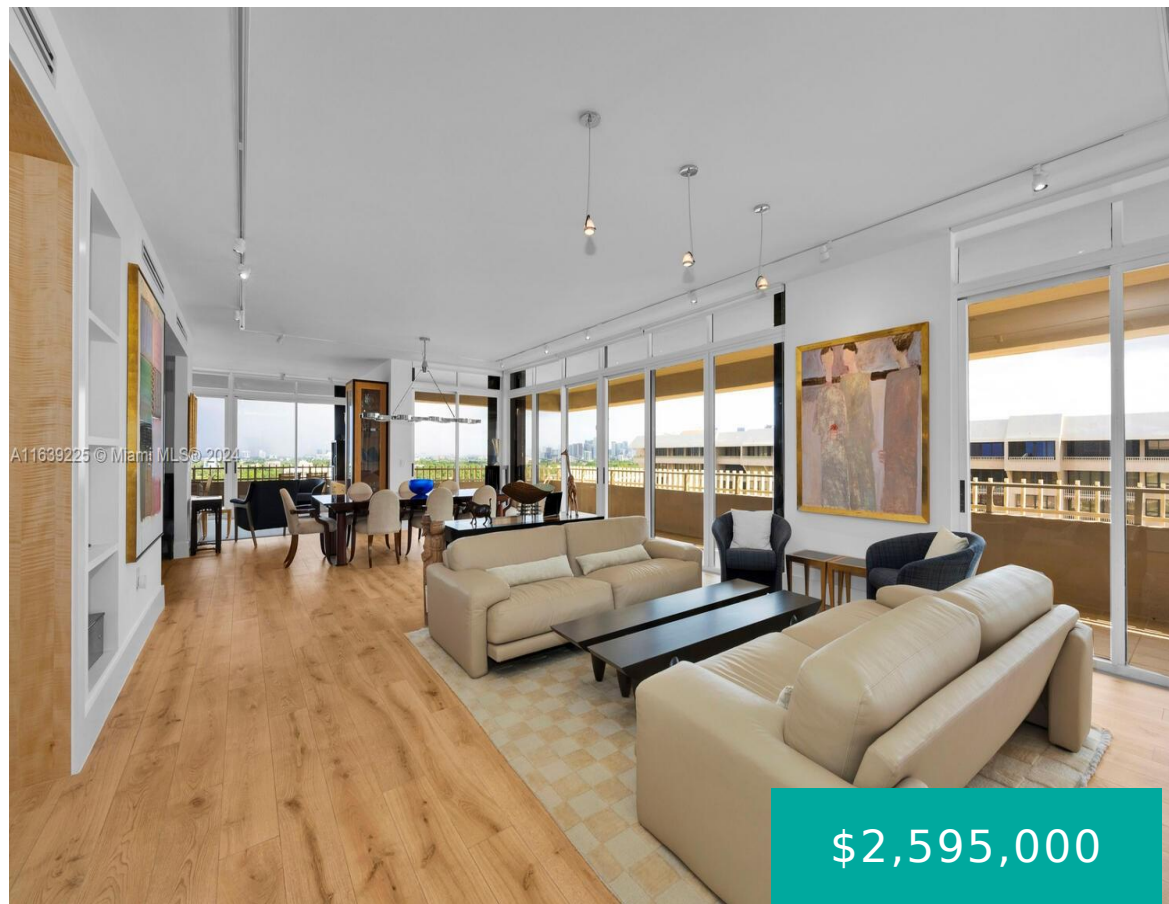


1 GROVE ISLE DR MIAMI FL 33133 1 GROVE ISLE DR APH09

<https://www.cays.com>



GROVE ISLE CONDO UNIT A-PH-9 UNDIV .2640% INT IN COMMON ELEMENTS
OFF REC 10279-195 10590-2766 OR 19409-2361 1200 1 Rarely available
Grove Isle Building One penthouse, originally a spacious 3/2.5 (2,614 sq ft)
with 9 ½ ft. ceilings, NE corner wrap-around balcony with spectacular
unobstructed views from every room of Biscayne Bay, Downtown Miami, and
[...]

- 2 beds
- 2, 3 baths
- Condominium, Residential
- Condominium, Residential
- Active
- 2614 sq ft

Basics



Bathrooms Half: 1

Type: Condominium, Residential

Bedrooms: 2 beds

Half baths: 1 half bath

Area: 2614 sq ft

View: Bay,Water

County: Miami-Dade

Category: Condominium, Residential

Status: Active

Bathrooms: 2, 3 baths

Floors: 1, 18 floor

Year built: 1979

Subdivision Name: GROVE ISLE CONDO

Property details

Subdivision Name: GROVE ISLE CONDO

Parcel Number: 33133

Property Features

Waterfront Features: Bayfront,NoFixedBridges

Cooling: CentralAir,Electric

Garage Y/N: 1

Heating Y/N: 1

View: Bay,Water

Waterfront Y/N: 1

Stories Total: 18

Parking Features: Assigned,Guest,Valet

Cooling Y/N: 1

Heating: Central,Electric

Pets Allowed: SizeLimit,Yes

View Y/N: 1

Stories: 1

Rooms & Units Description

Unit Number: APH09

Location Details



County Or Parish: Miami-Dade

Directions: South Bayshore Drive to Grove Isle/Fair Isle Street, then east, over the bridge to the guard gate. This unit is in Building 1.

Elementary School: Keybiscayne **Middle/Junior School:** Ponce De Leon

High School: Coral Gables

Building Details

Architectural Style: HighRise,Penthouse

Construction Materials: Block

Covered Spaces: 2

Garage Spaces: 2

Levels: One

Floor covering: Carpet

Amenities & Features

Pool Features: Association,Heated

Security Features: ClosedCircuitCameras,DoorMan,SecurityGuard

Association Amenities: Clubhouse,CommunityKitchen,FitnessCenter,Library,Playground,Pool,Sauna,SpaHotTub,Storage,Trails,Trash,VehicleWashArea,Elevators

Utilities: CableAvailable

Cooling: CentralAir,Electric

Furnished: Unfurnished

Interior Features: WetBar,BedroomOnMainLevel,ClosetCabinetry,DualSinks,EntranceFoyer,EatInKitchen,LivingDiningRoom,MainLivingAreaEntryLevel,Pantry,WalkInClosets

Appliances: BuiltInOven,Dryer,Dishwasher,ElectricRange,ElectricWaterHeater,Disposal,Microwave,Refrigerator,Washer

Parking Features: Assigned,Guest,Valet

Patio & Porch Features: Balcony,Open

Waterfront Features: Bayfront,NoFixedBridges

Window Features: Blinds,Drapes

Exterior Features: Balcony,StormSecurityShutters

Heating: Central,Electric

Laundry Features: LaundryTub

Nearby Schools

Middle Or Junior School: Ponce De Leon

Elementary School: Keybiscayne

High School: Coral Gables

Expenses, Fees & Taxes

Association Fee: \$3,452

Tax Annual Amount: \$15,583

Tax Year: 2023



Fees & Taxes

Association Fee: 3452

Miscellaneous

Association Fee Frequency: Monthly

Listing Terms: Cash,Conventional

List Office Name: Brown Harris Stevens

Direction Faces: Northeast

Miscellaneous

Above Grade

Finished Area:

Miami, FL

Virtual Tour URL:

<https://my.matterport.com/show/?m=paV1srjp8Mk&mIs=1>

Courtesy of

Office Name: Brown Harris Stevens

