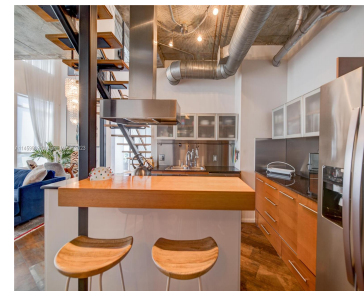
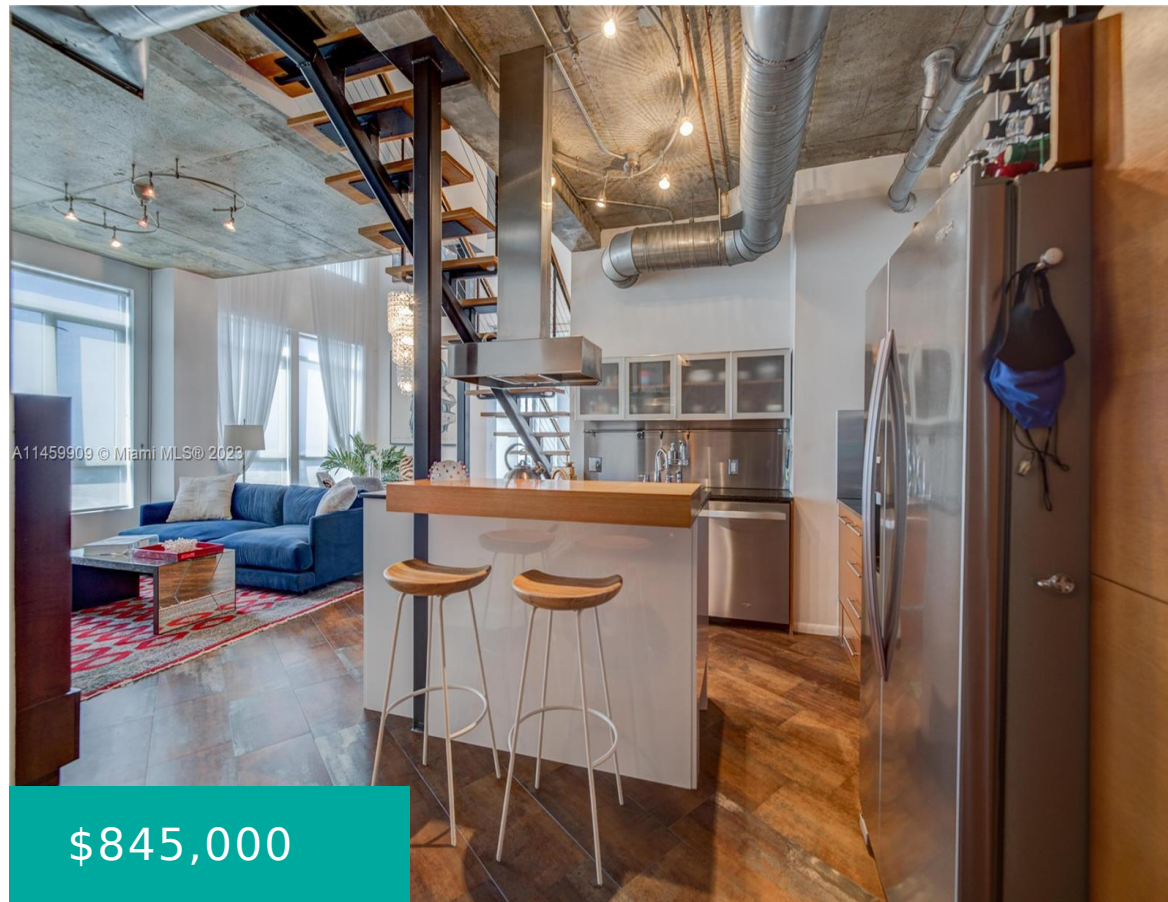


# 10 SW SOUTH RIVER DR PH1108 MIAMI FL 33130

<https://www.cays.com>



PENTHOUSE 3/2 at Neo Lofts, Miami River. This modern penthouse loft at Neo Lofts is the perfect place to call home. With its open floor plan, high ceilings, and loft concept, this unit is spacious and airy. The remodeled bathrooms feature modern fixtures and finishes, and the balcony offers picturesque views of the Miami River [...]

- 3 beds
- 2 baths
- Condominium
- Residential
- Active
- 1418 sq ft

## Basics

**Bathrooms Full:** 2

**Category:** Residential

**Status:** Active

**Bathrooms:** 2 baths

**Year built:** 2004

**Lot Size Units:** Square Feet

**Type:** Condominium

**Bedrooms:** 3 beds

**Area:** 1418 sq ft



---

## Property details

**Total Building Area:** 1418

**Subdivision Name:** NEO CONDO

**Possession:** Closing & Funding

**Direction Faces:** Southeast

**Parcel Number:** 01-41-38-086-1120

---

## Property Features

**Exterior Features:** Security/High Impact Doors,Tennis Court(s)

**Waterfront Features:** River Front

**Parking Features:** Attached,Garage,One Space,Valet

**Appliances:** Dryer,Dishwasher,Washer

**Association Amenities:** Clubhouse,Fitness Center,Pool

**Cooling:** Central Air

**Covered Spaces:** 2

**Furnished:** Partially

**Garage Y/N:** 1

**Pets Allowed:** Conditional,Yes

**View Y/N:** 1

**Entry Location:** 20

**Attached Garage Y/N:** 1

**Utilities:** Cable Not Available

**Interior Features:** Bedroom on Main Level,Eat-in Kitchen,Kitchen Island,Living/Dining Room,Main Living Area Entry Level,Elevator

**Pool Features:** Association

**Security Features:** Door Man,Elevator Secured,Secured Garage/Parking

**Architectural Style:** High Rise,Penthouse

**Construction Materials:** Block

**Cooling Y/N:** 1

**Flooring:** Concrete,Parquet,Tile

**Garage Spaces:** 2

**Heating:** Central,None

**View:** Pool,River

**Entry Level:** 20

**Property Attached Y/N:** 1

**Stories Total:** 20

---

## Rooms & Units Description

**Unit Number:** PHII08

**Number of Units in the Community:** 200



---

## Location Details

**County Or Parish:** Miami-Dade County

**Directions:** Miami International Airport: 2100 NW 42nd Ave Follow NW 21st St to NW 37th Ave (1.4 mi) Continue on NW 37th Ave. Take FL-836 E and NW 7th St to NW 3rd St in Miami (4.0 mi). Drive to S River Dr (0.5 mi) Neo Lofts 10 SW South River Dr, Miami, FL 33130

**Elementary School:** Riverside

**Middle/Junior School:** de Diego; Jose

**High School:** Washington; Brooker T

---

## Fees & Taxes

**Tax Annual Amount:** 8052

**Tax Year:** 2022

**Tax Legal Description:** NEO CONDO UNIT PH1108 UNDIV 0.07667% INT IN COMMON ELEMENTS OFF REC 21932-0687 COC 22388-1867 05 2004 1

**Association Fee:** 1258

**Association Fee Frequency:** Monthly

**Association Fee Includes:** Association Management,Amenities,Common Areas,Sewer,Security,Trash,Water

---

## Miscellaneous

**Public Survey Township:** 1

**Public Survey Section:** 38

**Syndication Remarks:** PentHouse with 3 bedroom 2 bathroom at Neo Loft. Amazing views to the Miami River. FACIL DE MOSTRAR

**Year Built Details:** Resale

**Virtual Tour URL:** <https://my.matterport.com/show/?m=FUwXdnnGeCn>

---

## Courtesy of

**Office Name:** HR 19 Realty LLC

