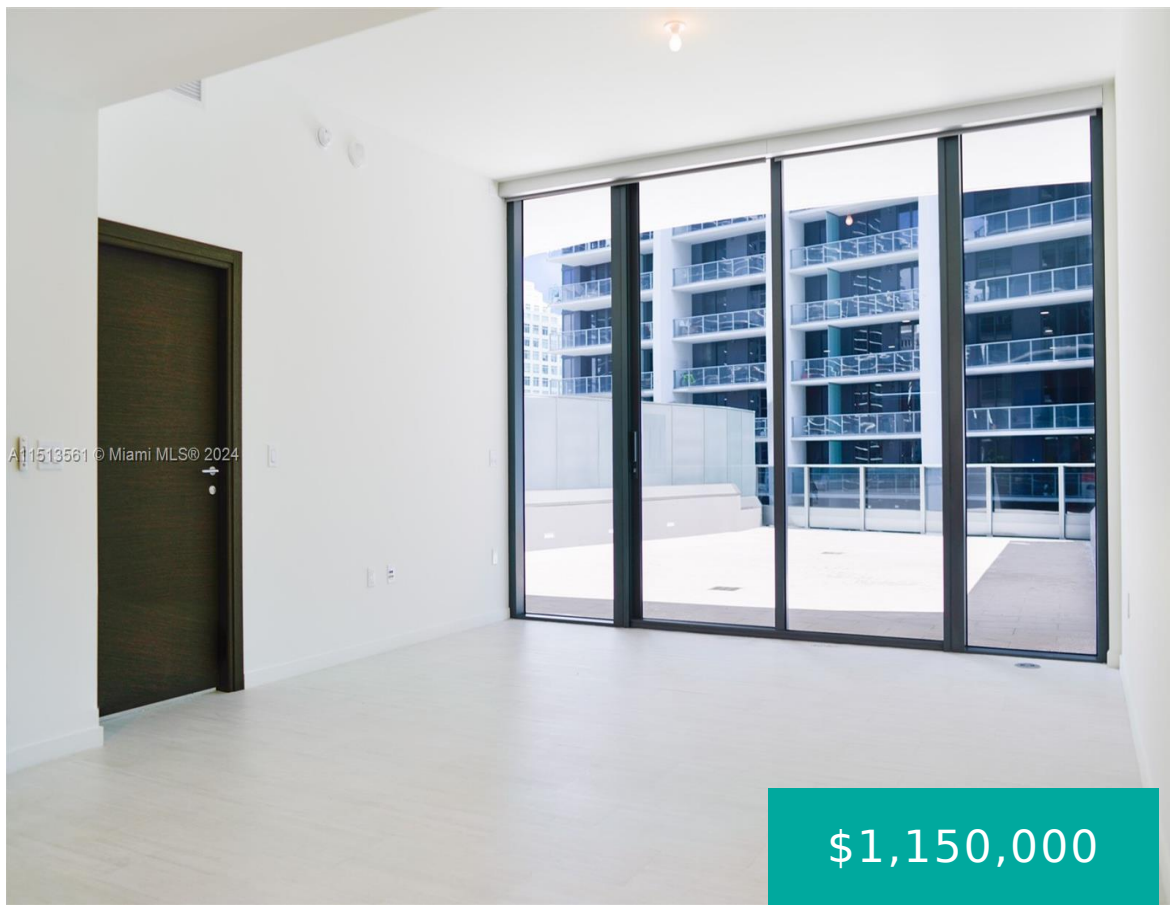


1000 BRICKELL PLAZA MIAMI FL 33131 1000 BRICKELL PLAZA 1807

<https://www.cays.com>



BRICKELL FLATIRON CONDO UNIT 1807 UNDIV 0.001468% INT IN COMMON ELEMENTS OFF REC 29397-2321 One of the most unique units in the Flatiron, this unit has 12 ft. ceilings, and a massive, oversized balcony, and a den. The unit is a great opportunity for an investor, as its tenant occupied until December 2025.

- 1 bed
- 2, 2 baths
- Condominium, Residential
- Condominium, Residential
- Active
- 1034 sq ft

Basics



Category: Condominium, Residential

Status: Active

Bathrooms: 2, 2 baths

Floors: 64 floors

Year built: 2018

Subdivision Name: Brickell Flatiron

Type: Condominium, Residential

Bedrooms: 1 bed

Half baths: 0 half baths

Area: 1034 sq ft

View: Other

County: Miami-Dade

Property details

Subdivision Name: Brickell Flatiron

Parcel Number: 33131

Property Features

Parking Features: OneSpace,Valet

Cooling Y/N: 1

Heating: Central

Pets Allowed: Conditional,Yes

Stories Total: 64

Cooling: CentralAir

Garage Y/N: 1

Heating Y/N: 1

View: Other

Rooms & Units Description

Unit Number: 1807

Location Details

County Or Parish: Miami-Dade

Building Details



Construction Materials: Block

Garage Spaces: 1

Covered Spaces: 1

Floor covering: CeramicTile

Amenities & Features

Pool Features: Association

Security Features: DoorMan,ElevatorSecured,SecurityGuard

Association Amenities:

BilliardRoom,BusinessCenter,FitnessCenter,Other,Pool,Sauna,SpaHotTub

Exterior Features: Balcony,Deck

Heating: Central

Appliances: Dryer,Dishwasher,ElectricRange,Other,Refrigerator

Parking Features: OneSpace,Valet

Patio & Porch Features: Balcony,Deck,Open

Cooling: CentralAir

Furnished: Unfurnished

Interior Features:

BedroomOnMainLevel,KitchenIsland,WalkInClosets

Expenses, Fees & Taxes

Association Fee: \$1,574

Tax Year: 2023

Tax Annual Amount: \$13,463

Fees & Taxes

Association Fee: 1574

Miscellaneous

Association Fee Frequency: Monthly

Listing Terms: Cash,Conventional

Attribution Contact: management@ipmwp.us

List Office Name: IPM Worldwide Properties

Direction Faces: West

Miscellaneous



Above Grade **Virtual Tour URL:**
Finished Area: <https://www.propertypanorama.com/instaview/mia/A11513561>
Miami, FL

Courtesy of

Office Name: IPM Worldwide Properties

