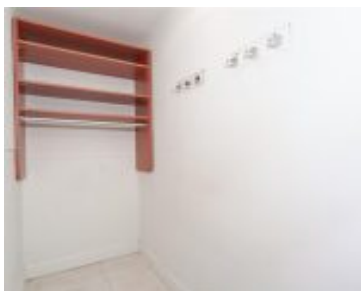


1000 MICHIGAN AVE MIAMI BEACH FL 33139 1000 MICHIGAN AVE 501

<https://www.cays.com>



\$395,000



PARKVIEW HOUSE CONDO UNIT 501 FIFTH FLOOR UNDIV .0175% INT IN COMMON ELEMENTS CLERKS FILES 70R209299 & 70R221780 COC 23749-3247 07 2005 1 Spacious and stylish, this oversized 1 bed 1.5 bath condo in the heart of South Beach has been completely updated with an open kitchen, granite countertops, built-in walk-in closets, and impact windows. [...]

- 1 bed
- 1, 2 bath
- Condominium, Residential
- Condominium, Residential
- Active
- 788 sq ft

Basics



Bathrooms Half: 1

Type: Condominium, Residential

Bedrooms: 1 bed

Half baths: 1 half bath

Area: 788 sq ft

View: City,Garden

County: Miami-Dade

Category: Condominium, Residential

Status: Active

Bathrooms: 1, 2 bath

Floors: 1, 6 floor

Year built: 1970

Subdivision Name: PARKVIEW HOUSE CONDO

Property details

Subdivision Name: PARKVIEW HOUSE CONDO

Parcel Number: 33139

Property Features

Parking Features: Assigned,Covered,OneSpace

Cooling Y/N: 1

Heating: Central

Pets Allowed: Conditional,Yes

Stories: 1

Cooling: CentralAir

Garage Y/N: 1

Heating Y/N: 1

View: City,Garden

Stories Total: 6

Rooms & Units Description

Unit Number: 501

Location Details

County Or Parish: Miami-Dade

Middle/Junior School: Nautilus

Elementary School: Feinberg-Fisher K8

High School: Miami Beach



Building Details

Construction Materials: Block

Garage Spaces: 1

Floor covering: Tile

Covered Spaces: 1

Levels: One

Amenities & Features

Pool Features: Association,Heated

Security Features:
ComplexFenced,SecuredGarageParking,LobbySecured

Utilities: CableAvailable

Cooling: CentralAir

Heating: Central

Laundry Features: CommonArea

Parking Features: Assigned,Covered,OneSpace

Association Amenities: BikeStorage,Laundry,Pool,Elevators

Window Features: Blinds,ImpactGlass

Exterior Features: Fence

Interior Features:
BedroomOnMainLevel,Elevator,FamilyDiningRoom,FirstFloorEntry,LivingDiningRoom,MainLivingAreaEntryLevel

Appliances: Dishwasher,ElectricRange,Microwave

Nearby Schools

Middle Or Junior School: Nautilus

High School: Miami Beach

Elementary School: Feinberg-Fisher K8

Expenses, Fees & Taxes

Association Fee: \$432

Tax Year: 2025

Tax Annual Amount: \$2,700

Fees & Taxes

Association Fee: 432

Miscellaneous



Association Fee Frequency: Monthly **List Office Name:** One Sotheby's International Re

Listing Terms: Cash,Conventional,FHA

Miscellaneous

Above Grade

Virtual Tour URL:

Finished Area: <https://www.propertypanorama.com/instaview/mia/A11898330>

Miami Beach, FL

Courtesy of

Office Name: One Sotheby's International Re

