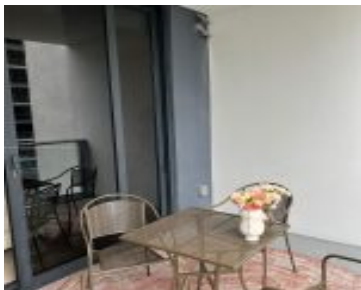
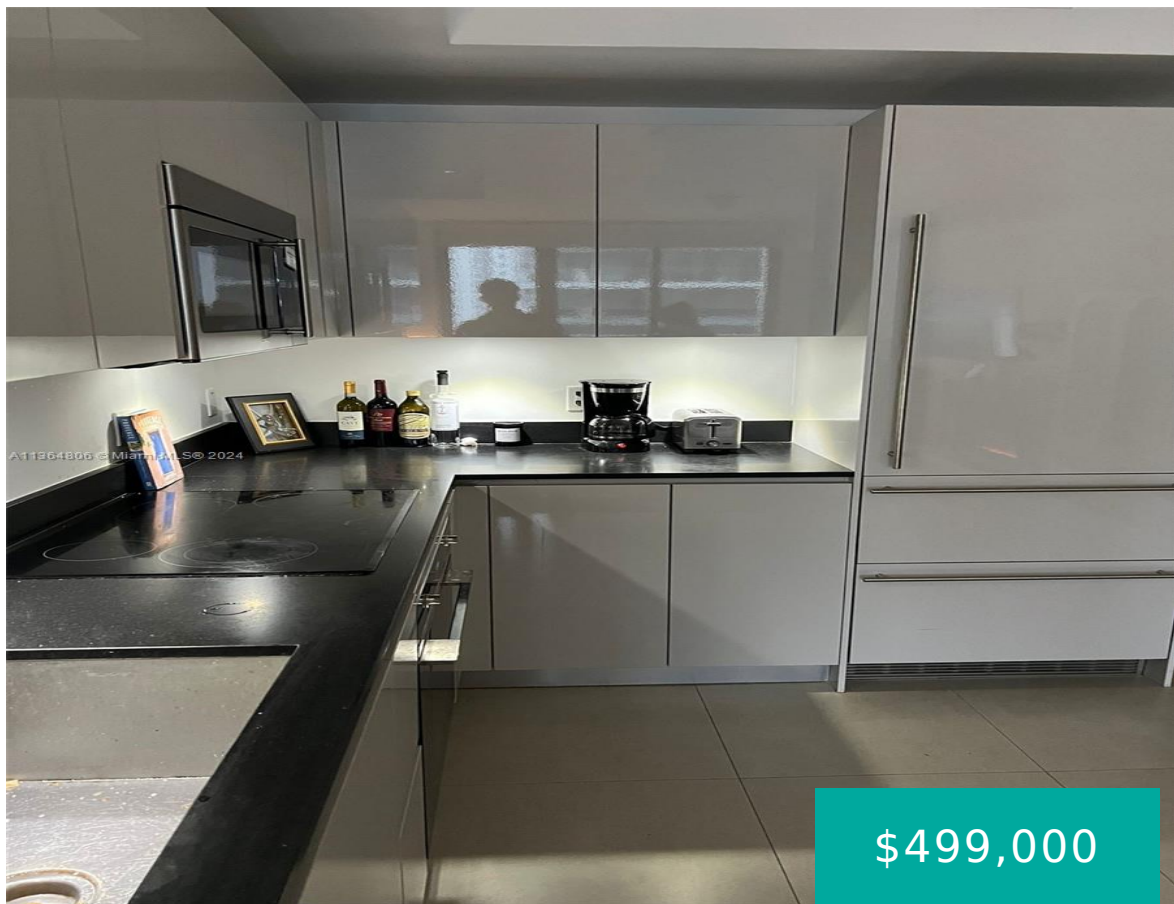


1010 BRICKELL AVE MIAMI FL 33131 1010 BRICKELL AVE 2010

<https://www.cays.com>



1010 BRICKELL CONDO UNIT 2010 UNDIV 0.096035% INT IN COMMON
ELEMENTS OFF REC 29021-1917 Unit is tenant occupied until 4/11/2025 for
\$2600

- 0 beds
- 1, 1 bath
- Condominium, Residential
- Condominium, Residential
- Active
- 442 sq ft

Basics



Category: Condominium, Residential

Status: Active

Bathrooms: 1, 1 bath

Floors: 0 floors

Year built: 2017

Subdivision Name: 1010 BRICKELL CONDO

Type: Condominium, Residential

Bedrooms: 0 beds

Half baths: 0 half baths

Area: 442 sq ft

View: Other

County: Miami-Dade

Property details

Subdivision Name: 1010 BRICKELL CONDO

Parcel Number: 33131

Property Features

Parking Features: Covered,OneSpace

Garage Y/N: 1

Heating Y/N: 1

View: Other

Cooling: CeilingFans

Heating: Central

Pets Allowed: No

Rooms & Units Description

Unit Number: 2010

Location Details

County Or Parish: Miami-Dade

Building Details



Architectural Style: HighRise

Construction Materials: Block

Covered Spaces: 1

Garage Spaces: 1

Floor covering: CeramicTile

Amenities & Features

Parking Features: Covered,OneSpace

Patio & Porch Features: Balcony,Deck,Open

Cooling: CeilingFans

Heating: Central

Appliances:

Dryer,Dishwasher,ElectricWaterHeater,Disposal,TrashCompactor

Security Features: DoorMan,ElevatorSecured,FireAlarm

Association Amenities:

BasketballCourt,BusinessCenter,Clubhouse,Elevators,FitnessCenter,Barbecue,PicnicArea,Sauna,TennisCourts

Exterior Features: Balcony,Barbecue,Courtyard,Deck,SecurityHighImpactDoors

Interior Features: Elevator,Bar

Expenses, Fees & Taxes

Association Fee: \$588

Tax Year: 2022

Fees & Taxes

Association Fee: 588

Miscellaneous

Association Fee Frequency: Monthly

List Office Name: Golod Group LLC

Listing Terms: Cash,Conventional,FHA,VaLoan

Miscellaneous

Above Grade

Virtual Tour URL:

Finished Area: <https://www.propertypanorama.com/instaview/mia/A11364806>

Miami, FL



Courtesy of

Office Name: Golod Group LLC

