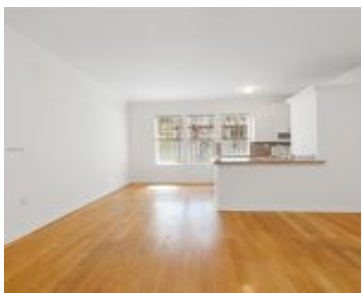


1027 PENNSYLVANIA AVE MIAMI BEACH FL 33139 1027 PENNSYLVANIA AVE 103

<https://www.cays.com>



\$325,000



PENN PLAZA CONDO UNIT 103 UNDIV 6.39% INT IN COMMON ELEMENTS OFF REC 19856-2479 OR 20406-0433 0502 1 COC 25702-3543 06 2007 1 Sunlit corner 2-bedroom condo on the first floor, boasting an open layout, wood floors, central A/C, and a modern kitchen with a dishwasher and microwave. Perfectly situated in the heart of South [...]

- 2 beds
- 1, 1 bath
- Condominium, Residential
- Condominium, Residential
- Active
- 800 sq ft

Basics



Category: Condominium, Residential

Status: Active

Bathrooms: 1, 1 bath

Floors: 3 floors

Year built: 1925

Subdivision Name: PENN PLAZA CONDO

Type: Condominium, Residential

Bedrooms: 2 beds

Half baths: 0 half baths

Area: 800 sq ft

View: Other

County: Miami-Dade

Property details

Subdivision Name: PENN PLAZA CONDO

Parcel Number: 33139

Property Features

Parking Features: OnStreet

Cooling Y/N: 1

Heating Y/N: 1

View: Other

Cooling: CentralAir,CeilingFans

Heating: Central

Pets Allowed: Conditional,Yes

Stories Total: 3

Rooms & Units Description

Unit Number: 103

Location Details

County Or Parish: Miami-Dade

Middle/Junior School: Nautilus

Elementary School: Feinberg-Fisher K8

High School: Miami Beach

Building Details



Architectural Style: Other

Construction Materials: Other

Floor covering: Tile, Wood

Amenities & Features

Parking Features:
OnStreet

Security Features: ComplexFenced,Intercom,LobbySecured,Other

Association Amenities:
Laundry,Other

Utilities: CableAvailable

Window Features: Blinds

Cooling: CentralAir,CeilingFans

Exterior Features: Other

Furnished: Unfurnished

Heating: Central

Interior Features:
BedroomOnMainLevel,FirstFloorEntry,LivingDiningRoom,TubShower

Laundry Features:
CommonArea

Appliances: Dishwasher,ElectricRange,Microwave,Other,Refrigerator

Nearby Schools

Middle Or Junior School: Nautilus

Elementary School: Feinberg-Fisher K8

High School: Miami Beach

Expenses, Fees & Taxes

Association Fee: \$478

Tax Annual Amount: \$5,057

Tax Year: 2023

Fees & Taxes



Association Fee: 478

Miscellaneous

Association Fee Frequency: Monthly

Listing Terms: Cash,Conventional

List Office Name: Compass Florida, LLC.

Direction Faces: Northeast

Miscellaneous

Above Grade

Finished Area:

Miami Beach, FL

Virtual Tour URL:

<https://www.propertypanorama.com/instaview/mia/A11679560>

Courtesy of

Office Name: Compass Florida, LLC.

