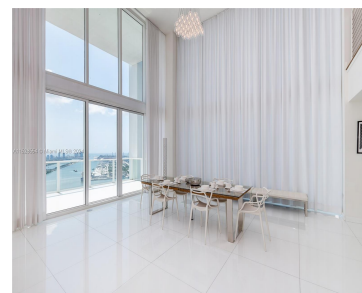
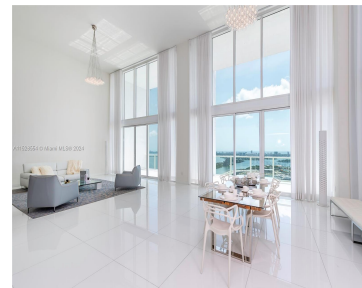


# 1040 BISCAYNE BLVD 4402 MIAMI FL 33132

<https://www.cays.com>



Exquisite 3-STORY PENTHOUSE in the heart of downtown Miami offers breathtaking OCEAN, BAY, & CITY VIEWS. Featuring 4,264 SQFT w/ 3 BEDS & 5.5 BATHS, the first floor features a modern OPEN LAYOUT with kitchen, living, and dining areas. Discover a welcoming guest bedroom w/ a full ensuite bath. Ascend to the SECOND FLOOR, where [...]

- 3 beds
- 6 baths
- Condominium
- Residential Lease
- Active
- 4264 sq ft

## Basics

**Bathrooms Half:** 1

**Lot Size Units:** Square Feet

**Type:** Condominium

**Bedrooms:** 3 beds

**Area:** 4264 sq ft

**Bathrooms Full:** 5

**Category:** Residential Lease

**Status:** Active

**Bathrooms:** 6 baths

**Year built:** 2007



---

## Property details

**Direction Faces:** Northeast

**Subdivision Name:** TEN MUSEUM PK RESIDENTIAL

**Parcel Number:** 01-32-31-062-1930

---

## Property Features

**Exterior Features:** Balcony,Security/High Impact Doors

**Interior Features:** Breakfast Area,Dining Area,Separate/Formal Dining Room,Entrance Foyer,Eat-in Kitchen,Kitchen Island,First Floor Entry,Pantry

**Waterfront Features:** Bay Front,Intracoastal Access,Ocean Front

**Window Features:** Impact Glass

**Pool Features:** In Ground,Pool

**Parking Features:** Attached,Garage

**Appliances:** Dryer,Dishwasher,Microwave,Refrigerator

**Architectural Style:** Tri-Level

**Association Amenities:** Elevator(s),Fitness Center,Spa/Hot Tub

**Construction Materials:** Block

**Covered Spaces:** 3

**Flooring:** Other,Wood

**Furnished:** Furnished

**Garage Spaces:** 3

**Garage Y/N:** 1

**Pets Allowed:** Conditional,Yes

**View:** Bay,Ocean,Water

**View Y/N:** 1

**Entry Level:** 44

**Entry Location:** 44

**Patio and Porch Features:** Balcony,Open

**Waterfront Y/N:** 1

**Attached Garage Y/N:** 1

**Stories:** 3

**Utilities:** Cable Available

---

## Rooms & Units Description

**Unit Number:** 4402



---

## Location Details

**County Or Parish:** Miami-Dade County

**Middle/Junior School:** de Diego; Jose

**Zoning Description:** 6401

**Elementary School:** Wheatley; Phyllis

**High School:** Washington; Brooker T

---

## Fees & Taxes

**Tax Legal Description:** TEN MUSEUM PK RESIDENTIAL CONDO UNIT 4402 UNDIV 0.016092%  
INT IN COMMON ELEMENTS OFF REC 25712-1549 COC 26052-1197 11 2007 1

---

## Miscellaneous

**Public Survey Township:** 1

**Public  
Survey  
Section:** 31

**Syndication Remarks:** Exquisite 3-STORY PENTHOUSE in the heart of downtown Miami offers breathtaking OCEAN, BAY, and CITY VIEWS. Featuring 4,264 SQFT w/ 3 BEDS & 5.5 BATHS.

**Year Built  
Details:**  
Resale

**Virtual Tour URL:** <https://www.propertypanorama.com/instaview/mia/A11528554>

---

## Courtesy of

**Office Name:** One Sotheby's International Realty

