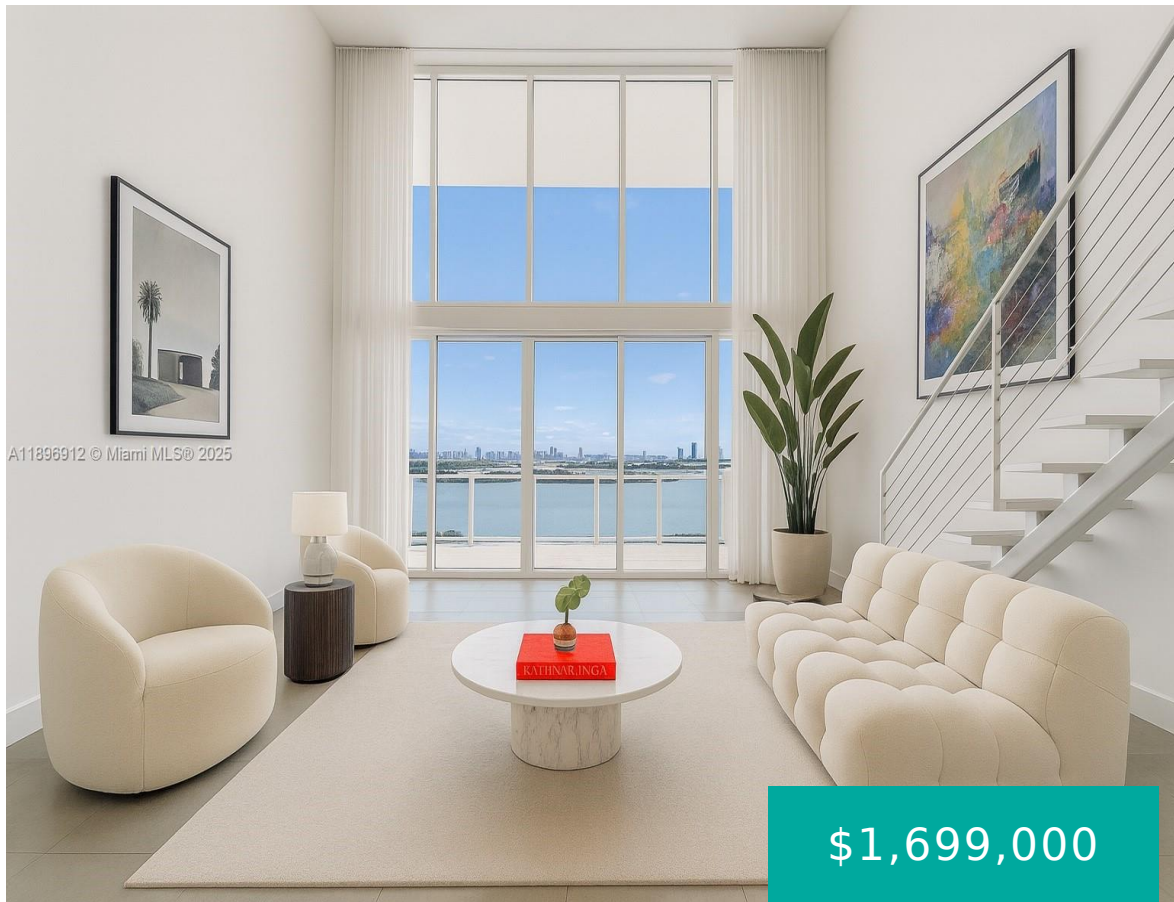


1040 BISCAYNE BLVD MIAMI FL 33132 1040 BISCAYNE BLVD 2402

<https://www.cays.com>



TEN MUSEUM PK RESIDENTIAL CONDO UNIT 2402 UNDIV 0.006350% INT IN COMMON ELEMENTS OFF REC 25712-1549 COC 26052-4953 11 2007 1
Discover loft living at Ten Museum Park, designed by Oppenheim Architecture. This two-story loft features two spacious bedrooms and two-and-a-half bathrooms, offering sophistication and comfort. Enjoy premium amenities such as a spa, wellness and [...]

- 2 beds
- 2, 3 baths
- Condominium, Residential
- Condominium, Residential
- Active
- 1802 sq ft

Basics



Bathrooms Half: 1

Category: Condominium, Residential

Type: Condominium, Residential **Status:** Active

Bedrooms: 2 beds

Bathrooms: 2, 3 baths

Half baths: 1 half bath

Floors: 50 floors

Area: 1802 sq ft

Year built: 2007

View: Bay,Ocean,Water

Subdivision Name: TEN MUSEUM PK RESIDENTIAL

County: Miami-Dade

Property details

Subdivision Name: TEN MUSEUM PK RESIDENTIAL

Parcel Number: 33132

Property Features

Waterfront Features: Bayfront

Parking Features: Assigned,Covered

Cooling: CentralAir,Electric

Cooling Y/N: 1

Garage Y/N: 1

Heating: Central,Electric

Heating Y/N: 1

Pets Allowed: Conditional,Yes

View: Bay,Ocean,Water

View Y/N: 1

Waterfront Y/N: 1

Stories Total: 50

Rooms & Units Description

Unit Number: 2402

Location Details

County Or Parish:
Miami-Dade

Directions: I-95 South, Take left exit 2D toward I-395 E/Miami Beach/Port Miami/Biscayne Blvd/US-1, Turn left onto NE 11th Street, End at 1040 Biscayne Blvd



Building Details

Architectural Style: HighRise

Covered Spaces: 2

Floor covering: Other

Construction Materials: Block

Garage Spaces: 2

Amenities & Features

Pool Features: Heated

Security Features: DoorMan,ElevatorSecured,LobbySecured,SmokeDetectors

Association Amenities: BusinessCenter,Clubhouse,FitnessCenter,Pool,SpaHotTub,Elevators

Utilities: CableAvailable

Cooling: CentralAir,Electric

Exterior Features: Balcony

Interior Features:

BuiltInFeatures,ClosetCabinetry,EntranceFoyer,FirstFloorEntry,LivingDiningRoom,SeparateShower,UpperLevelPrimary,WalkInClosets,Elevator,Loft

Parking Features: Assigned,Covered

Patio & Porch Features: Balcony,Open

Waterfront Features: Bayfront

Window Features: Blinds,ImpactGlass

Electric: Fuses

Heating: Central,Electric

Appliances:

BuiltInOven,Dryer,Dishwasher,ElectricRange,Disposal,IceMaker,Microwave,Refrigerator,SelfCleaningOven

Expenses, Fees & Taxes

Association Fee: \$2,754

Tax Year: 2025

Tax Annual Amount: \$25,634

Fees & Taxes

Association Fee: 2754

Miscellaneous

Association Fee Frequency: Monthly **List Office Name:** Compass Florida, LLC

Listing Terms: Cash,Conventional

Miscellaneous

Above Grade **Virtual Tour URL:**

Finished Area: <https://www.propertypanorama.com/instaview/mia/A11896912>

Miami, FL



Courtesy of

Office Name: Compass Florida, LLC

