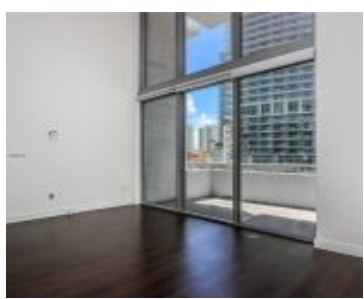
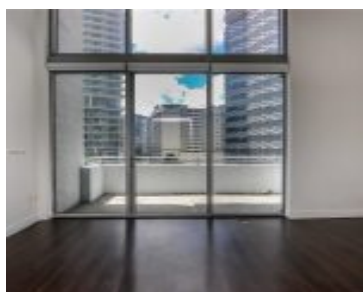
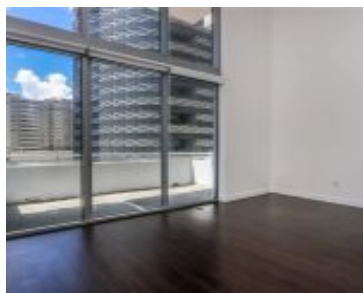
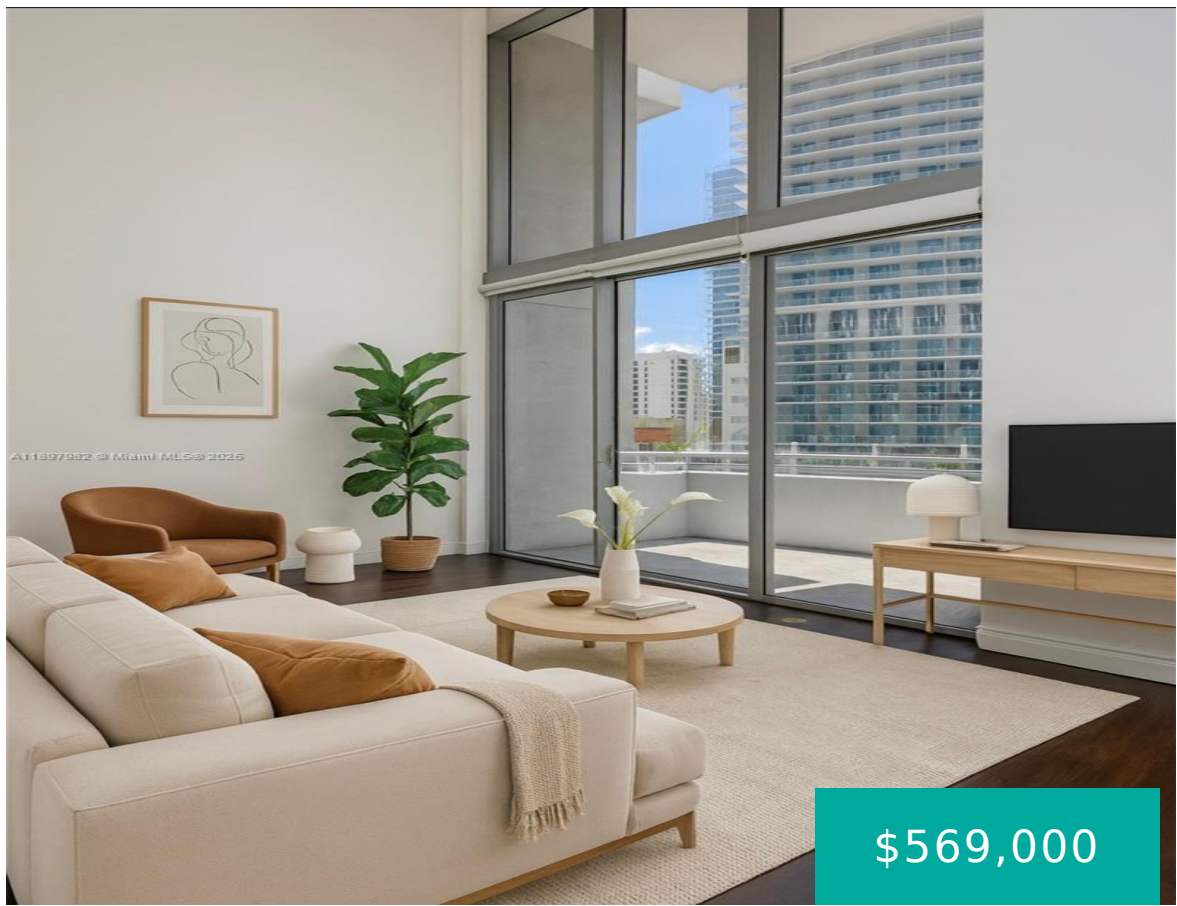


# 1050 BRICKELL AVE MIAMI FL 33131 1050 BRICKELL AVE 414

<https://www.cays.com>



1060 BRICKELL CONDO UNIT 414 UNDIV 0.169035580% INT IN COMMON ELEMENTS OFF REC 26157-0942 If you want the feel of a townhome(duplex) in the heart of the city, take advantage of this opportunity to own a rare large 2-story loft townhome w/ 20 feet soaring ceilings and windows on a lower floor with large balcony [...]

- 1 bed
- 2, 2 baths
- Condominium, Residential
- Condominium, Residential
- Active
- 1000 sq ft

## Basics



**Category:** Condominium, Residential  
**Status:** Active  
**Bathrooms:** 2, 2 baths  
**Floors:** 50 floors  
**Year built:** 2008  
**Subdivision Name:** 1060 BRICKELL CONDO

**Type:** Condominium, Residential  
**Bedrooms:** 1 bed  
**Half baths:** 0 half baths  
**Area:** 1000 sq ft  
**View:** City  
**County:** Miami-Dade

---

## Property details

**Subdivision Name:** 1060 BRICKELL CONDO

**Parcel Number:** 33131

---

## Property Features

**Parking Features:** Attached, Garage, OneSpace

**Cooling:** CentralAir

**Garage Y/N:** 1

**Heating Y/N:** 1

**View:** City

**Carport Y/N:** 1

**Cooling Y/N:** 1

**Heating:** Central

**Pets Allowed:** Conditional, Yes

**Stories Total:** 50

---

## Rooms & Units Description

**Unit Number:** 414

---

## Location Details

**County Or Parish:** Miami-Dade

**Middle/Junior School:** Shenandoah

**Elementary School:** Southside



---

## Building Details

**Architectural Style:** HighRise

**Covered Spaces:** 2

**Floor covering:** Laminate

**Construction Materials:** Block

**Garage Spaces:** 1

---

## Amenities & Features

**Pool Features:** Association

**Security Features:** DoorMan,SmokeDetectors

**Window Features:** ImpactGlass

**Exterior Features:** SecurityHighImpactDoors

**Interior Features:**

FamilyDiningRoom,HighCeilings,LivingDiningRoom,SittingAreaInPrimary,SeparateShower

**Parking Features:** Attached,Garage,OneSpace

**Association Amenities:** BusinessCenter,Cabana,FitnessCenter,Pool,Sauna

**Cooling:** CentralAir

**Heating:** Central

**Appliances:**

Dryer,Dishwasher,ElectricRange,Disposal,IceMaker,Microwave,Refrigerator,SelfCleaningOven,Washer

---

## Nearby Schools

**Middle Or Junior School:** Shenandoah

**Elementary School:** Southside

---

## Expenses, Fees & Taxes

**Association Fee:** \$1,200

**Tax Year:** 2025

**Tax Annual Amount:** \$6,376

---

## Fees & Taxes

**Association Fee:** 1200

---

## Miscellaneous

**Association Fee Frequency:** Monthly **List Office Name:** London Foster Realty

**Listing Terms:** Cash,Conventional,FHA



---

## Miscellaneous

**Above Grade**    **Virtual Tour URL:**  
**Finished Area:** <https://www.propertypanorama.com/instaview/mia/A11897982>  
Miami, FL

---

## Courtesy of

**Office Name:** London Foster Realty

