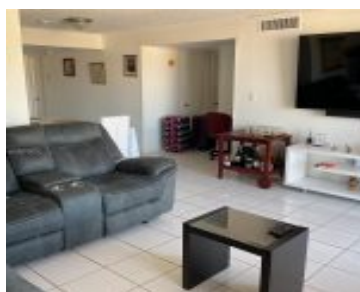


10801 109TH CT MIAMI FL 33176 10801 SW 109TH CT D316

<https://www.cays.com>



\$309,000



THE TERRACES CONDO PH II UNIT D-316 UNDIV .4940219% INT IN COMMON ELEMENTS OFF REC 11458-2077 OR 18603-4931 0499 1 Location, in the Heart of East Kendall, walking distance to Miami Dade College(Killian Dr.), shopping mall & nearby expressways 874 & Turnpike, or in the corner is the bus station approaching the metro rail to [...]

- 3 beds
- 2, 3 baths
- Condominium, Residential
- Condominium, Residential
- Active
- 1190 sq ft

## Basics



**Bathrooms Half:** 1

**Category:** Condominium, Residential

**Type:** Condominium, Residential **Status:** Active

**Bedrooms:** 3 beds

**Bathrooms:** 2, 3 baths

**Half baths:** 1 half bath

**Floors:** 4 floors

**Area:** 1190 sq ft

**Year built:** 1971

**View:** Garden,Other

**Subdivision Name:** THE TERRACES CONDO PH II

**County:** Miami-Dade

---

## Property details

**Subdivision Name:** THE TERRACES CONDO PH II

**Parcel Number:** 33176

---

## Property Features

**Building Features:** ExteriorLighting

**Parking Features:** Assigned,Guest

**Cooling:** CentralAir,Electric

**Cooling Y/N:** 1

**Heating:** Central,Electric

**Heating Y/N:** 1

**Pets Allowed:** NoPetRestrictions,Yes

**View:** Garden,Other

**Stories Total:** 4

---

## Rooms & Units Description

**Unit Number:** D316

---

## Location Details

**County Or Parish:** Miami-Dade

**Directions:** Please use your Mobile device's GPS for precise directions.

**Elementary School:** Lehman; William H. **Middle/Junior School:** Arvida

**High School:** Miami Killian



---

## Building Details

**Construction Materials:** Block

**Floor covering:** CeramicTile, Laminate

---

## Amenities & Features

**Pool Features:** Association

**Parking Features:** Assigned, Guest

**Security Features:**  
ElevatorSecured

**Patio & Porch Features:** Balcony, Open

**Accessibility Features:**  
AccessibleElevatorInstalled

**Association Amenities:**  
Laundry, Barbecue, PicnicArea, Playground, Pool, TennisCourts, Elevators

**Utilities:** CableAvailable

**Cooling:** CentralAir, Electric

**Exterior Features:**  
Balcony, StormSecurityShutters

**Furnished:** Unfurnished

**Heating:** Central, Electric

**Interior Features:**  
BedroomOnMainLevel, LivingDiningRoom, MainLivingAreaEntryLevel, ThirdFloorEntry

**Laundry Features:**  
CommonArea

**Appliances:** Dishwasher, ElectricRange, Refrigerator

**Features:** ExteriorLighting

---

## Nearby Schools

**Middle Or Junior School:** Arvida

**Elementary School:** Lehman; William H.

**High School:** Miami Killian

---

## Expenses, Fees & Taxes

**Association Fee:** \$540

**Tax Annual Amount:** \$3,889

**Tax Year:** 2023

---

## Fees & Taxes

**Association Fee:** 540



---

## Miscellaneous

**Association Fee Frequency:** Monthly **List Office Name:** Realty World Executive Homes

**Listing Terms:** Cash,Conventional **Direction Faces:** South

---

## Miscellaneous

**Above Grade** **Virtual Tour URL:**

**Finished Area:** <https://www.propertypanorama.com/instaview/mia/A11734857>

Miami, FL

---

## Courtesy of

**Office Name:** Realty World Executive Homes

