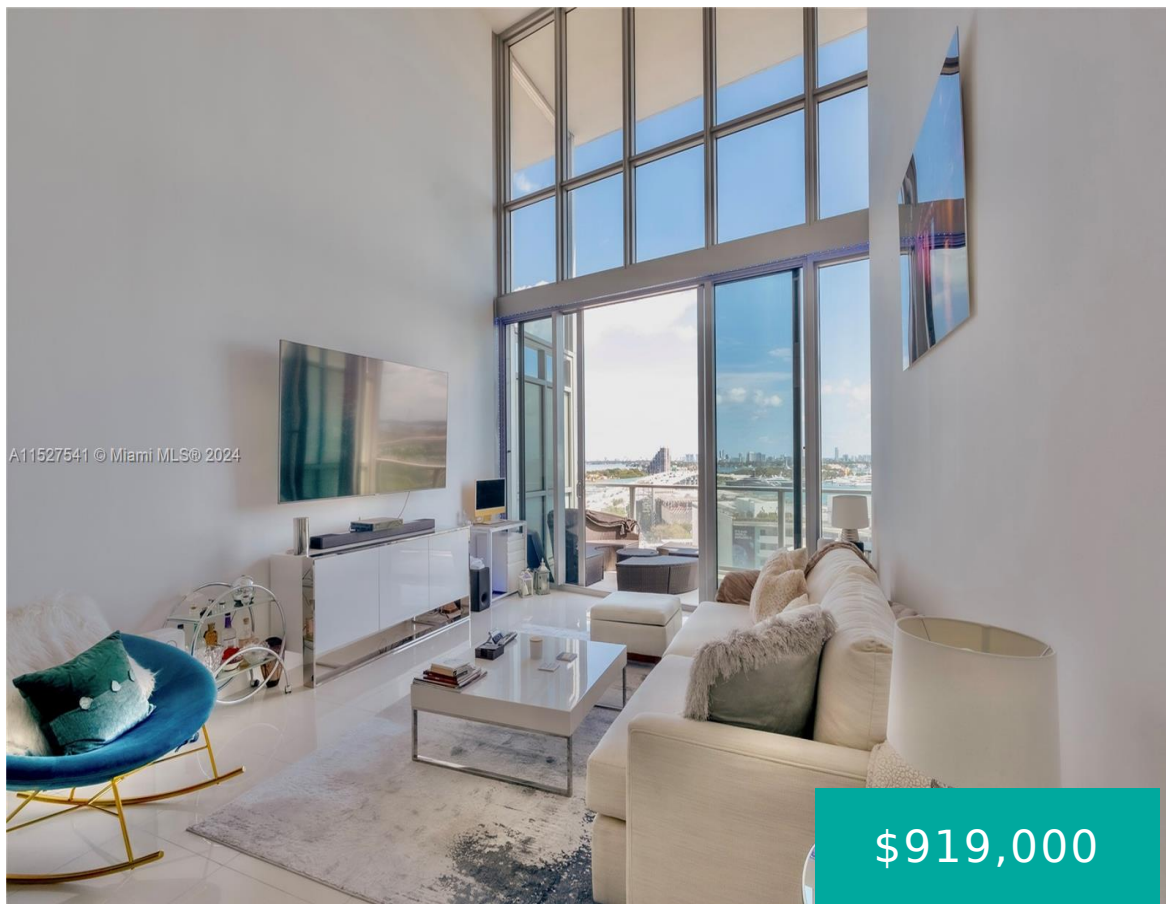
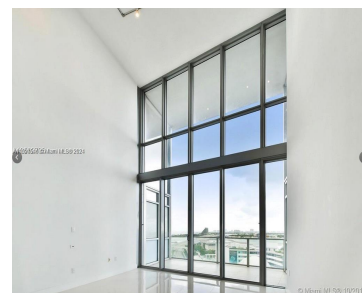
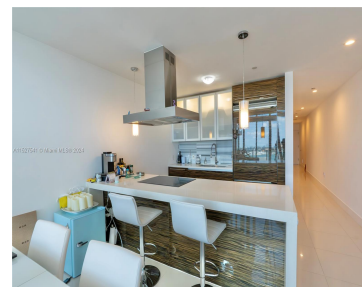


1100 BISCAYNE BLVD 1504 MIAMI FL 33132

<https://www.cays.com>



\$919,000



Best priced direct east unit per square foot at Marquis Residences. Lower floor direct bay view with high ceilings. Marquis is a luxury condominium across from Perez Art, Frost Science and the Arena. Excellent location with Miami World Center directly behind the building expanding every day with shopping, restaurants and entertainment. Marquis features luxury amenities [...]

- 1 bed
- 1 bath
- Condominium
- Residential
- Active
- 1637 sq ft

## Basics

**Bathrooms Full:** 1

**Category:** Residential

**Status:** Active

**Bathrooms:** 1 bath

**Year built:** 2009

**Lot Size Units:** Square Feet

**Type:** Condominium

**Bedrooms:** 1 bed

**Area:** 1637 sq ft



---

## Property details

**Total Building Area:** 1637

**Parcel Number:** 01-32-31-070-1500

**Subdivision Name:** MARQUIS CONDO

**Possession:** Closing & Funding

---

## Property Features

**Exterior Features:** Security/High Impact Doors

**Window Features:** Impact Glass

**Parking Features:** One Space

**Appliances:** Dryer,Dishwasher,Refrigerator,Washer

**Construction Materials:** Block

**Cooling Y/N:** 1

**Flooring:** Tile

**Garage Y/N:** 1

**Heating Y/N:** 1

**View:** Bay

**Entry Level:** 15

**Property Attached Y/N:** 1

**Interior Features:** Bidet,Vaulted Ceiling(s)

**Pool Features:** Association,Heated

**Security Features:** Door Man,Elevator Secured,Fire Sprinkler System

**Association Amenities:** Fitness Center,Pool,Spa/Hot Tub

**Cooling:** Central Air

**Covered Spaces:** 1

**Garage Spaces:** 1

**Heating:** Central

**Pets Allowed:** Dogs OK,Yes

**View Y/N:** 1

**Entry Location:** 15

**Stories Total:** 64

---

## Rooms & Units Description

**Unit Number:** 1504

---

## Location Details

**County Or Parish:** Miami-Dade County



---

## Fees & Taxes

**Tax Annual Amount:** 9086

**Tax Year:** 2023

**Tax Legal Description:** MARQUIS CONDO UNIT 1504 UNDIV  
0.30387069% INT IN COMMON ELEMENTS OFF REC  
26920-3495

**Association Fee:** 1942

**Association Fee Frequency:** Monthly

**Association Fee Includes:**  
Amenities

---

## Miscellaneous

**Public Survey Township:** 1

**Public  
Survey  
Section:** 31

**Syndication Remarks:** Best priced unit per square foot at Marquis. Low floor direct bay view with high ceilings. Marquis is a luxury condo across from Museum Park

**Year Built  
Details:**  
Resale

**Virtual Tour URL:** <https://www.propertypanorama.com/instaview/mia/A11527541>

---

## Courtesy of

**Office Name:** West Avenue Realty

