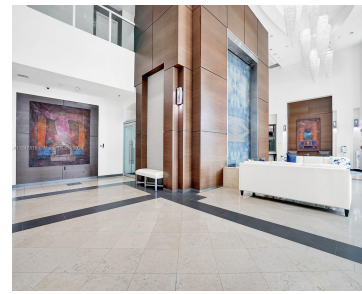


1155 BRICKELL BAY DR 3404 MIAMI FL 33131

<https://www.cays.com>



\$1,145,000



This beautiful, remodeled 3 bedroom 2 full bathrooms condo on the 34 floor has the best city and bay views, enjoy all the holiday's fireworks from the comfort of your own balcony. Marble and engineered wood floors currently being used as a 2 bedroom but very easy to convert back to a 3. Building offers [...]

- 3 beds
- 2 baths
- Condominium
- Residential
- Active
- 1510 sq ft

Basics

Bathrooms Full: 2

Category: Residential

Status: Active

Bathrooms: 2 baths

Year built: 2001

Lot Size Units: Square Feet

Type: Condominium

Bedrooms: 3 beds

Area: 1510 sq ft



Property details

Total Building Area: 1510

Direction Faces: South

Subdivision Name: THE MARK ON BRICKELL
COND

Parcel Number: 01-41-38-080-1320

Possession: Closing & Funding

Property Condition: Updated/Remodeled

Property Features

Exterior Features:

Barbecue,Courtyard,Fence

Interior Features: Closet Cabinetry,Kitchen Island,Elevator

Waterfront Features: Bay
Front

Window Features: Impact Glass

Pool Features: Association

Parking Features: Attached,Garage,One Space,Valet

Security Features: Elevator
Secured,Fire Alarm,Secured
Garage/Parking,Key Card
Entry,Lobby Secured,Smoke
Detector(s)

Appliances: Dryer,Dishwasher,Electric Range,Electric Water
Heater,Freezer,Disposal,Microwave,Refrigerator,Self Cleaning
Oven,Washer

Architectural Style: High Rise

Association Amenities: Billiard Room,Business
Center,Clubhouse,Fitness Center,Barbecue,Picnic
Area,Pool,Spa/Hot Tub,Tennis Court(s),Trash,Elevator(s)

Construction Materials: Block

Cooling: Central Air,Electric

Cooling Y/N: 1

Covered Spaces: 1

Flooring: Marble,Wood

Furnished: Unfurnished

Garage Spaces: 1

Garage Y/N: 1

Heating: Central,Electric

Heating Y/N: 1

Pets Allowed: Conditional,Yes

View: Bay,City,Ocean,Pool,Tennis Court,Water

View Y/N: 1

Entry Level: 34

Entry Location: 34

Property Attached Y/N: 1

Waterfront Y/N: 1

Attached Garage Y/N: 1

Stories Total: 37

Utilities: Cable Available

Rooms & Units Description



Unit Number: 3404

Location Details

County Or Parish: Miami-Dade County

Fees & Taxes

Tax Annual Amount: 10864

Tax Year: 2022

Tax Legal Description: THE MARK
ON BRICKELL CONDO UNIT 3404
UNDIV 0.36868 INT IN COMMON
ELEMENTS OFF REC 19735-4359 OR
19985-3969 10 2001 1 COC
21946-1379 12 2003

Association Fee: 2300

Association Fee Frequency:
Monthly

Association Fee Includes: Association
Management,Amenities,Common Areas,Cable
TV,Insurance,Internet,Maintenance
Structure,Parking,Pest
Control,Pool(s),Sewer,Trash,Water

Miscellaneous

Public Survey Township: 1

Syndication Remarks: WATER VIEW CONDO IN BRICKELL 3 BEDROOM CONDO REMODELED SHORT TERM RENTALS

Virtual Tour URL:

<https://cdn-production.socialboost.com/3qJePZHStFFxf-yjaVVFNETUQr0pIK3hrjmmesau3e3EI0F6pmBUMmIfc0xJ--L8.mp4>

**Public
Survey
Section:**
38

**Year
Built
Details:**
Resale

Courtesy of

Office Name: First Service Realty ERA

