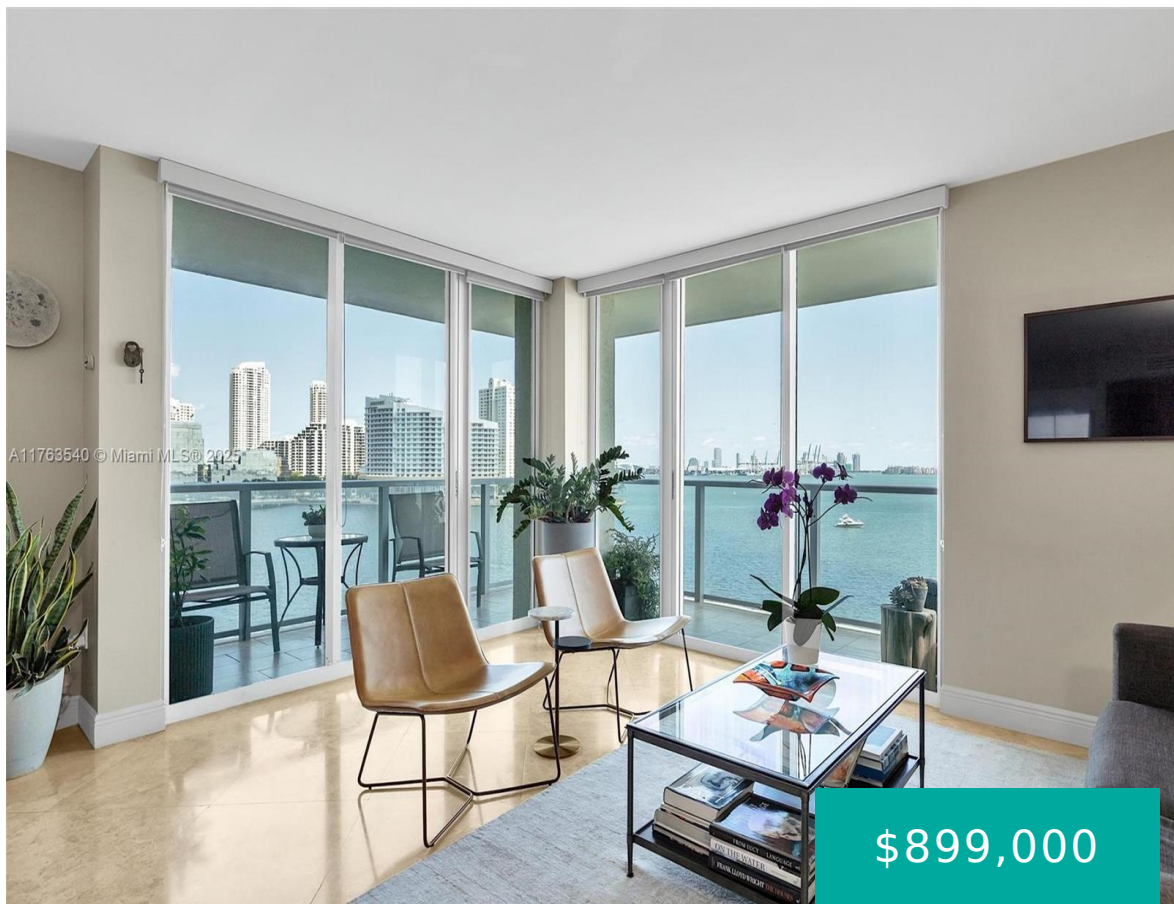


1155 BRICKELL BAY DR MIAMI FL 33131 1155 BRICKELL BAY DR 710

<https://www.cays.com>



THE MARK ON BRICKELL CONDO UNIT 710 UNDIV 0.29397 INT IN COMMON ELEMENTS OFF REC 19735-4359 COC 23092-2824 23671-0905 0205 1
Endless bay views from this corner NE facing 2 bedroom, 2 bath condo at the Mark. The 10 line is the most desired line at The Mark. The unit features a split floor plan, [...]

- 2 beds
- 2, 2 baths
- Condominium, Residential
- Condominium, Residential
- Active
- 1200 sq ft



Basics



Category: Condominium, Residential

Status: Active

Bathrooms: 2, 2 baths

Floors: 33 floors

Year built: 2001

Subdivision Name: THE MARK ON BRICKELL COND

Type: Condominium, Residential

Bedrooms: 2 beds

Half baths: 0 half baths

Area: 1200 sq ft

View: Bay,Ocean,Pool

County: Miami-Dade

Property details

Subdivision Name: THE MARK ON BRICKELL COND

Parcel Number: 33131

Property Features

Waterfront Features: Bayfront

Cooling: CentralAir,Electric

Garage Y/N: 1

Heating Y/N: 1

View: Bay,Ocean,Pool

Waterfront Y/N: 1

Parking Features: Assigned,Attached,Garage,OneSpace

Cooling Y/N: 1

Heating: Central,Electric

Pets Allowed: Conditional,Yes

View Y/N: 1

Stories Total: 33

Rooms & Units Description

Unit Number: 710

Location Details

County Or Parish: Miami-Dade



Building Details

Construction Materials: Block

Garage Spaces: 1

Covered Spaces: 1

Floor covering: Marble

Amenities & Features

Pool Features: Heated

Security Features: DoorMan,LobbySecured

Association Amenities:

BusinessCenter,Clubhouse,Elevators,FitnessCenter,Other,Pool,TennisCourts,Trash

Utilities: CableAvailable

Cooling: CentralAir,Electric

Heating: Central,Electric

Appliances:

Dryer,Dishwasher,ElectricRange,Disposal,Microwave,Refrigerator,Washer

Parking Features:

Assigned,Attached,Garage,OneSpace

Patio & Porch Features:

Balcony,Open

Waterfront Features: Bayfront

Window Features: Blinds,ImpactGlass

Exterior Features: Balcony

Interior Features:

ClosetCabinetry,LivingDiningRoom,Other

Expenses, Fees & Taxes

Association Fee: \$1,857

Tax Year: 2024

Tax Annual Amount: \$7,433

Fees & Taxes

Association Fee: 1857

Miscellaneous

Association Fee Frequency: Monthly

Listing Terms: Cash,Conventional

List Office Name: The Suero Group

Direction Faces: Northeast



Miscellaneous

Above Grade **Virtual Tour URL:**

Finished Area: <https://www.propertypanorama.com/instaview/mia/A11763540>
Miami, FL

Courtesy of

Office Name: The Suero Group

