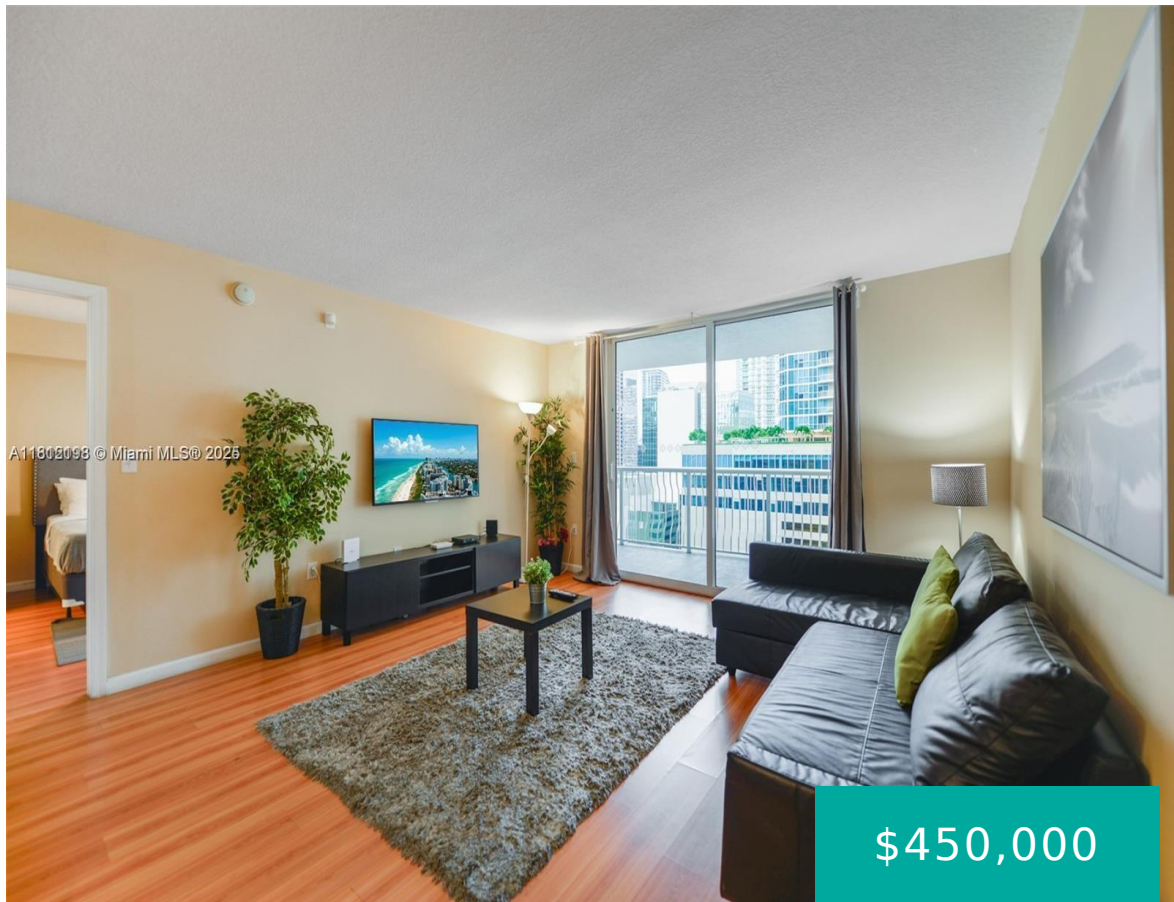


1200 BRICKELL BAY DR MIAMI FL 33131 1200 BRICKELL BAY DR 2120

<https://www.cays.com>



THE CLUB AT BRICKELL BAY PLAZA CONDO UNIT 2120 UNDIV 0.14592% INT IN COMMON ELEMENTS OFF REC 22843-0725 COC 26491-2609 07 2008 3
Amazing Location, at the heart of the Brickell Financial District. Great Investment Opportunity. Corporate rentals and short term allowed. 2 Pools, Gym and Spa.Great ROI - Fully Furnished. There are no special [...]

- 1 bed
- 1, 1 bath
- Condominium, Residential
- Condominium, Residential
- Active
- 825 sq ft

Basics



Category: Condominium, Residential

Status: Active

Bathrooms: 1, 1 bath

Floors: 40 floors

Year built: 2004

Subdivision Name: THE CLUB AT BRICKELL BAY

Type: Condominium, Residential

Bedrooms: 1 bed

Half baths: 0 half baths

Area: 825 sq ft

View: Bay

County: Miami-Dade

Property details

Subdivision Name: THE CLUB AT BRICKELL BAY

Parcel Number: 33131

Property Features

Parking Features: Detached,Garage

Cooling Y/N: 1

Heating: Central

Pets Allowed: No

View Y/N: 1

Cooling: CentralAir

Garage Y/N: 1

Heating Y/N: 1

View: Bay

Stories Total: 40

Rooms & Units Description

Unit Number: 2120

Location Details

County Or Parish: Miami-Dade

Building Details



Construction Materials: Block

Garage Spaces: 1

Covered Spaces: 1

Floor covering: Concrete

Amenities & Features

Parking Features: Detached,Garage

Association Amenities: Barbecue,PicnicArea

Exterior Features: None

Interior Features: BedroomOnMainLevel,FirstFloorEntry

Security Features: DoorMan

Cooling: CentralAir

Heating: Central

Appliances: Dishwasher

Expenses, Fees & Taxes

Association Fee: \$785

Tax Year: 2014

Tax Annual Amount: \$6,413

Fees & Taxes

Association Fee: 785

Miscellaneous

Association Fee Frequency: Monthly

Listing Terms: Cash

List Office Name: Envirotek Realty

Miscellaneous

Above Grade

Finished Area:

Miami, FL

Virtual Tour URL:

<https://www.propertypanorama.com/instaview/mia/A11812198>



Courtesy of

Office Name: Envirotek Realty

