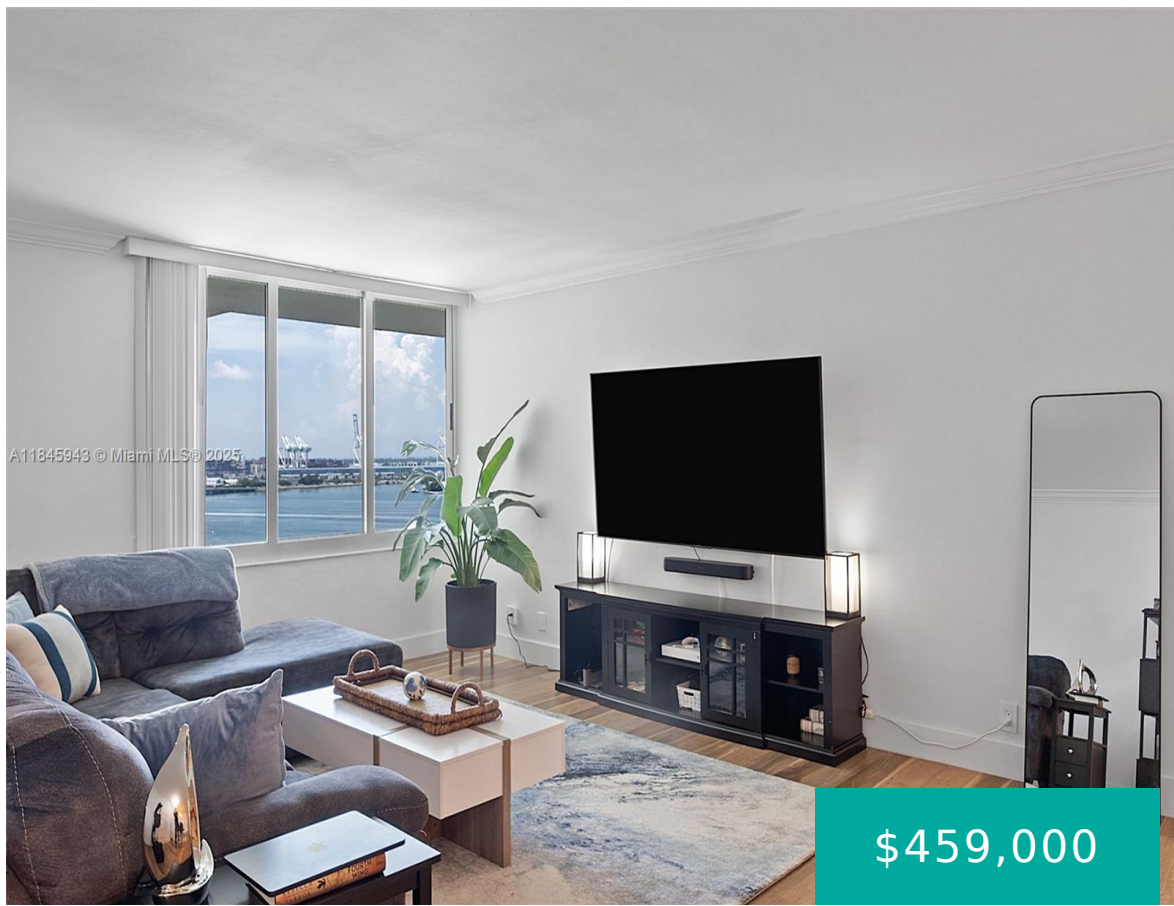


1200 WEST AVE MIAMI BEACH FL 33139 1200 WEST AVE PH31

<https://www.cays.com>



MIRADOR 1200 CONDO UNIT PH31 UNDIV 970/352132 INT IN COMMON ELEMENTS OFF REC 23543-3930 COC 23700-2847 08 2005 1 Enjoy spectacular Biscayne Bay, Port of Miami and Downtown views from this bright and beautifully renovated 1 bedroom/1 bath apartment, spacious living and dining areas ideal for entertaining. Serene wood floors throughout the entire apartment. Mirador [...]

- 1 bed
- 1, 1 bath
- Condominium, Residential
- Condominium, Residential
- Active
- 970 sq ft

Basics



Category: Condominium, Residential
Status: Active
Bathrooms: 1, 1 bath
Floors: 17 floors
Year built: 1965
Subdivision Name: MIRADOR 1200 CONDO

Type: Condominium, Residential
Bedrooms: 1 bed
Half baths: 0 half baths
Area: 970 sq ft
View: Bay, Intercoastal, Water
County: Miami-Dade

Property details

Subdivision Name: MIRADOR 1200 CONDO

Parcel Number: 33139

Property Features

Waterfront Features: Bayfront, Intracoastal Access

Cooling: Central Air

Heating: Central

Pets Allowed: Size Limit, Yes

View Y/N: 1

Stories Total: 17

Parking Features: None

Cooling Y/N: 1

Heating Y/N: 1

View: Bay, Intercoastal, Water

Waterfront Y/N: 1

Rooms & Units Description

Unit Number: PH31

Location Details

County Or Parish: Miami-Dade

High School: Miami Beach

Middle/Junior School: Nautilus



Building Details

Architectural Style: HighRise,Penthouse

Construction Materials: Block

Floor covering: Laminate, Other

Amenities & Features

Pool Features: Association,Heated

Security Features: DoorMan,SecuredGarageParking,KeyCardEntry,FireSprinklerSystem

Waterfront Features: Bayfront,IntracoastalAccess

Window Features: ImpactGlass

Exterior Features: SecurityHighImpactDoors

Interior Features:

BuiltInFeatures,BedroomOnMainLevel,ClosetCabinetry,DiningArea,SeparateFormalDiningRoom,LivingDiningRoom,TubShower,WalkInClosets

Appliances: BuiltInOven,Microwave,Refrigerator,SelfCleaningOven

Parking Features: None

Association Amenities: BikeStorage,BusinessCenter,Clubhouse,CommunityKitchen,Elevators,FitnessCenter,Laundry,Library,Barbecue,PicnicArea,Pool,SpaHotTub,Trash

Utilities: CableAvailable

Cooling: CentralAir

Heating: Central

Laundry Features: CommonArea

Nearby Schools

Middle Or Junior School: Nautilus

High School: Miami Beach

Expenses, Fees & Taxes

Association Fee: \$1,282

Tax Annual Amount: \$6,201

Tax Year: 2024

Fees & Taxes

Association Fee: 1282

Miscellaneous

Association Fee Frequency: Monthly **List Office Name:** Coldwell Banker Realty

Listing Terms: Cash,Conventional



Miscellaneous

Above Grade Finished Area: Miami Beach, FL

Courtesy of

Office Name: Coldwell Banker Realty

