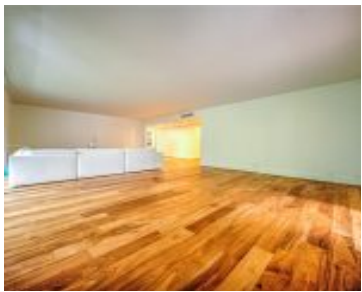




A11854120 © Miami MLS® 2025



KEY COLONY CONDO #4 UNIT 249 UNDIV .003597% INT IN COMMON
 ELEMENTS OFF REC 12178-2335 OR 19741-959 0601 1 COC 22154-0846 03
 2004 1 Renovated 1,790 sq ft condo in Botanica's Bromelia, Key Biscayne.
 This expansive unit features 2 bedrooms, a den, an office, and 2 full
 bathrooms. This beautiful unit features stainless steel appliances, [...]

- 2 beds
- 2, 2 baths
- Condominium, Residential
- Condominium, Residential
- Active
- 1790 sq ft

Basics



Category: Condominium, Residential
Status: Active
Bathrooms: 2, 2 baths
Floors: 4 floors
Year built: 1981
Subdivision Name: KEY COLONY NO 4 CONDO

Type: Condominium, Residential
Bedrooms: 2 beds
Half baths: 0 half baths
Area: 1790 sq ft
View: None
County: Miami-Dade

Property details

Subdivision Name: KEY COLONY NO 4 CONDO

Parcel Number: 33149

Property Features

Waterfront Features: OceanFront

Cooling: CentralAir

Garage Y/N: 1

Pets Allowed: Conditional,Yes

Waterfront Y/N: 1

Parking Features: OneSpace

Cooling Y/N: 1

Heating: None

View: None

Stories Total: 4

Rooms & Units Description

Unit Number: 249

Location Details

County Or Parish: Miami-Dade

Middle/Junior School: Ponce De Leon

Elementary School: Keybiscayne

High School: Coral Gables



Building Details

Architectural Style: None

Covered Spaces: 1

Floor covering: Hardwood, Wood

Construction Materials: Block

Garage Spaces: 1

Amenities & Features

Pool Features: Association

Security Features:

ClosedCircuitCameras,ComplexFenced,ElevatorSecured,FireAlarm,SecuredGarageParking,KeyCardEntry,LobbySecured,PhoneEntry,SecurityGuard

Association Amenities:

BikeStorage,BusinessCenter,Clubhouse,Elevators,FitnessCenter,Barbecue,PicnicArea,Playground,Pool,SpaHotTub,TennisCourts,Trash,VehicleWashArea

Cooling: CentralAir

Furnished: Unfurnished

Interior Features: Elevator

Appliances: Dryer,Dishwasher,ElectricRange,Disposal,Microwave,Refrigerator,Washer

Parking Features: OneSpace

Patio & Porch Features: Balcony,Open

Waterfront Features: OceanFront

Exterior Features:

Balcony,Barbecue,StormSecurityShutters,TennisCourts

Heating: None

Laundry Features: WasherHookup,DryerHookup

Nearby Schools

Middle Or Junior School: Ponce De Leon

High School: Coral Gables

Elementary School: Keybiscayne

Expenses, Fees & Taxes

Association Fee: \$2,230

Tax Year: 2024

Tax Annual Amount: \$14,511

Fees & Taxes

Association Fee: 2230

Miscellaneous



Association Fee Frequency: Monthly **List Office Name:** Compass Florida, LLC

Listing Terms: Cash,Conventional

Miscellaneous

Above Grade

Virtual Tour URL:

Finished Area: <https://www.propertypanorama.com/instaview/mia/A11854120>

Key Biscayne, FL

Courtesy of

Office Name: Compass Florida, LLC

