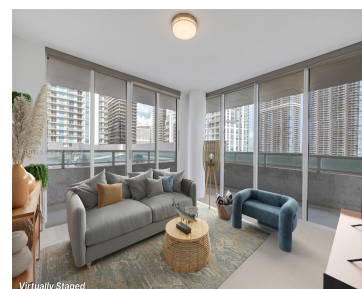


1250 S MIAMI AVE 2506 MIAMI FL 33130

<https://www.cays.com>



A rare 3-bedroom, corner unit with mesmerizing panoramic views from the wraparound open balcony. Come soak up the relaxing energy of the Intracoastal Bay, Brickell Avenue, & Miami's downtown skyline. The unit comes with 2 assigned parking spaces, impact-glass windows & doors, tile floors, all stainless-steel appliances, inside-unit washer/dryer, and internet/cable. The Vue at Brickell [...]

- 3 beds
- 2 baths
- Condominium
- Residential
- Active
- 1551 sq ft

Basics

Bathrooms Full: 2

Category: Residential

Status: Active

Bathrooms: 2 baths

Year built: 2004

Lot Size Units: Square Feet

Type: Condominium

Bedrooms: 3 beds

Area: 1551 sq ft



Property details

Total Building Area: 1551

Subdivision Name: VUE AT BRICKELL CONDO

Possession: Closing & Funding,Close Of Escrow

Disclosures: Seller Disclosure

Parcel Number: 01-41-39-088-1610

Property Features

Building Features: Exterior Lighting

Interior Features: Bedroom on Main Level,Elevator,Family/Dining Room,Walk-In Closet(s)

Accessibility Features: Accessible Elevator Installed

Pool Features: Association

Security Features: Secured Garage/Parking,Key Card Entry,Security Guard,Fire Sprinkler System

Architectural Style: High Rise

Construction Materials: Block

Cooling Y/N: 1

Flooring: Tile

Garage Y/N: 1

Heating Y/N: 1

View: Water

Entry Level: 25

Patio and Porch Features: Balcony,Open

Attached Garage Y/N: 1

Utilities: Cable Available

Exterior Features: Balcony

Laundry Features: Washer Hookup,Dryer Hookup

Window Features: Blinds,Sliding,Impact Glass

Parking Features: Assigned,Attached,Covered,Garage,Two or More Spaces

Appliances: Dryer,Dishwasher,Electric Range,Microwave,Refrigerator,Washer

Association Amenities: Clubhouse,Elevator(s),Fitness Center,Other,Pool

Cooling: Central Air,Electric

Covered Spaces: 2

Garage Spaces: 2

Heating: Central,Electric

Pets Allowed: Conditional,Yes

View Y/N: 1

Entry Location: 25

Property Attached Y/N: 1

Stories Total: 40



Rooms & Units Description

Unit Number: 2506

Location Details

County Or Parish: Miami-Dade County

Middle/Junior School: Shenandoah

Elementary School: Southside

High School: Washington; Brooker T

Fees & Taxes

Tax Annual Amount: 9442

Tax Year: 2023

Tax Legal Description: VUE AT BRICKELL CONDO
UNIT 2506 UNDIV 0.4398100% INT IN COMMON
ELEMENTS OFF REC 23102-262 OR 22937-4474
1204 2 COC 23742-3812 08 2005 1

Association Fee: 1699

Association Fee Frequency: Monthly

Association Fee Includes: Association
Management, Common
Areas, Security, Trash

Miscellaneous

Public Survey Township: 1

**Public Survey
Section:** 39

Syndication Remarks: A rare 3bed, corner unit with mesmerizing panoramic views from the wraparound open balcony. Come soak up the relaxing energy of the Intracoastal Bay

**Year Built
Details:**
Resale

Virtual Tour URL: <https://my.matterport.com/show/?m=HrRTXArJbEQ>

Courtesy of

Office Name: Redfin Corporation

