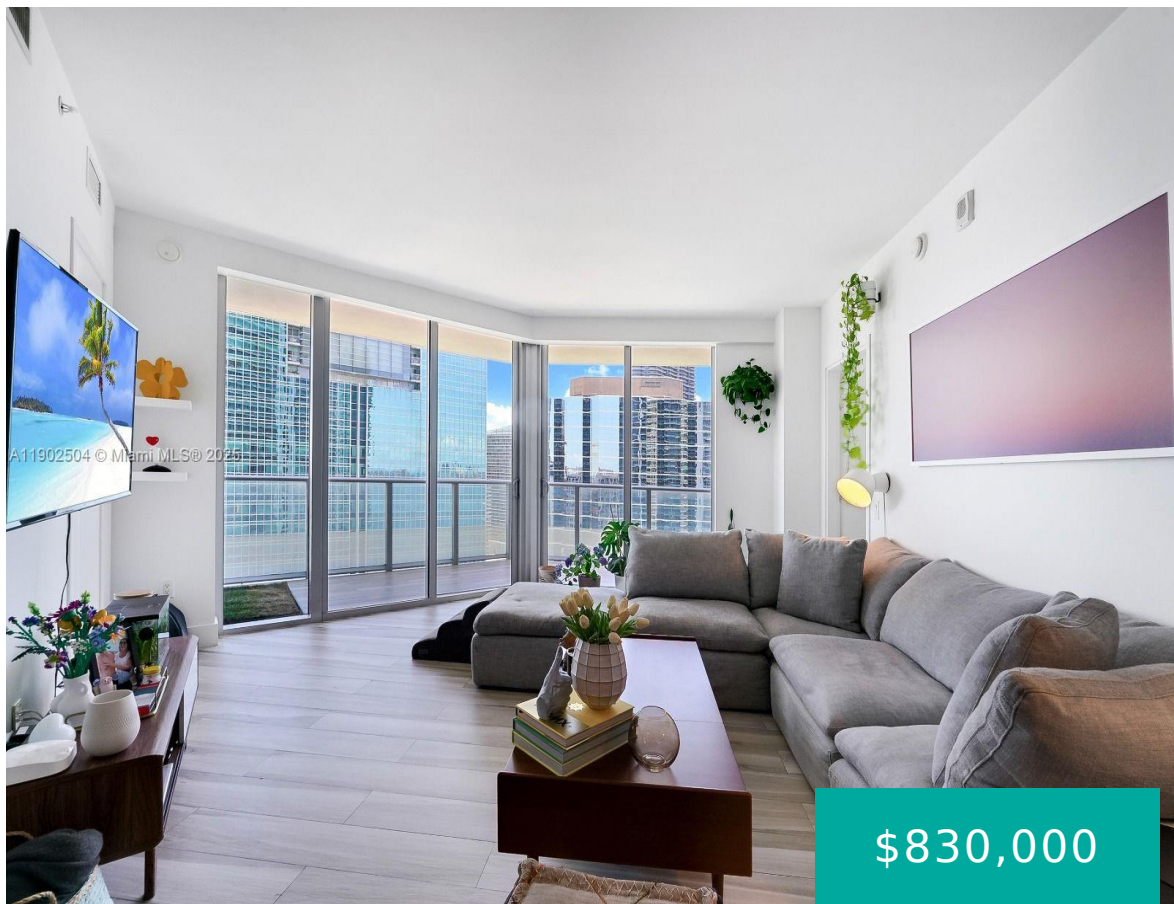


# 1300 BRICKELL BAY DR MIAMI FL 33131 1300 BRICKELL BAY DR 2901

<https://www.cays.com>



BRICKELLHOUSE CONDO UNIT 2901 UNDIV 0.268527% INT IN COMMON ELEMENTS OFF REC 28283-3663 Experience elevated living in this stunning corner residence at Brickell House. Perched on the 29th floor, this 2-bedroom, 2.5-bath home features a spacious split layout with floor-to-ceiling glass and an expansive wraparound balcony offering panoramic city views. The interiors boast a sleek [...]

- 2 beds
- 2, 3 baths
- Condominium, Residential
- Condominium, Residential
- Active
- 969 sq ft

## Basics



**Bathrooms Half:** 1

**Type:** Condominium, Residential

**Bedrooms:** 2 beds

**Half baths:** 1 half bath

**Area:** 969 sq ft

**View:** Bay, City

**County:** Miami-Dade

**Category:** Condominium, Residential

**Status:** Active

**Bathrooms:** 2, 3 baths

**Floors:** 46 floors

**Year built:** 2014

**Subdivision Name:** BRICKELLHOUSE CONDO

---

## Property details

**Subdivision Name:** BRICKELLHOUSE CONDO

**Parcel Number:** 33131

---

## Property Features

**Parking Features:** Assigned, OneSpace, Valet

**Cooling Y/N:** 1

**Heating:** Central, Electric

**Pets Allowed:** Conditional, Yes

**View Y/N:** 1

**Cooling:** Central Air, Electric

**Garage Y/N:** 1

**Heating Y/N:** 1

**View:** Bay, City

**Stories Total:** 46

---

## Rooms & Units Description

**Unit Number:** 2901

---

## Location Details

**County Or Parish:**  
Miami-Dade

**Directions:** Take Brickell Ave south, turn left on SE 13th St, then right on Brickell Bay Dr. Brickell House is on the left side at 1300 Brickell Bay Dr, valet available at the main entrance. Steps from Brickell City Centre and Four Seasons Hotel.



---

## Building Details

**Architectural Style:** HighRise

**Covered Spaces:** 1

**Floor covering:** Other, Tile

**Construction Materials:** Block

**Garage Spaces:** 1

---

### Amenities & Features

**Pool Features:** Association

**Security Features:**

ClosedCircuitCameras,DoorMan,ElevatorSecured,SecuredGarageParking,LobbySecured,Other,SmokeDetectors

**Association Amenities:**

BusinessCenter,Cabana,Clubhouse,FitnessCenter,Barbecue,Other,PicnicArea,Pool,Sauna,Elevators

**Cooling:** CentralAir,Electric

**Heating:** Central,Electric

**Appliances:**

Dryer,Dishwasher,ElectricRange,ElectricWaterHeater,IceMaker,Microwave,Refrigerator,SelfCleaningOven,Washer

**Parking Features:** Assigned,OneSpace,Valet

**Patio & Porch Features:** Balcony,Deck,Open

**Window Features:** Blinds,ImpactGlass

**Exterior Features:** Balcony,Deck,Other

**Interior Features:**

BuiltInFeatures,BedroomOnMainLevel,BreakfastArea,ClosetCabinetry,LivingDiningRoom,Other,SplitBedrooms,WalkInClosets

---

## Expenses, Fees & Taxes

**Association Fee:** \$941

**Tax Year:** 2024

**Tax Annual Amount:** \$10,490

---

## Fees & Taxes

**Association Fee:** 941

---

## Miscellaneous

**Association Fee Frequency:** Monthly **List Office Name:** Douglas Elliman

**Listing Terms:** Cash,Conventional

---

## Miscellaneous

**Above Grade Finished Area:** Miami, FL



---

# Courtesy of

**Office Name:** Douglas Elliman

