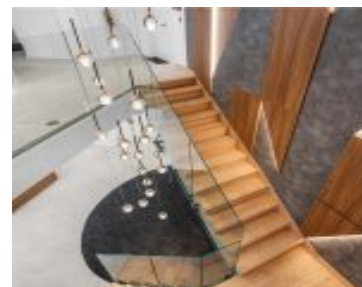
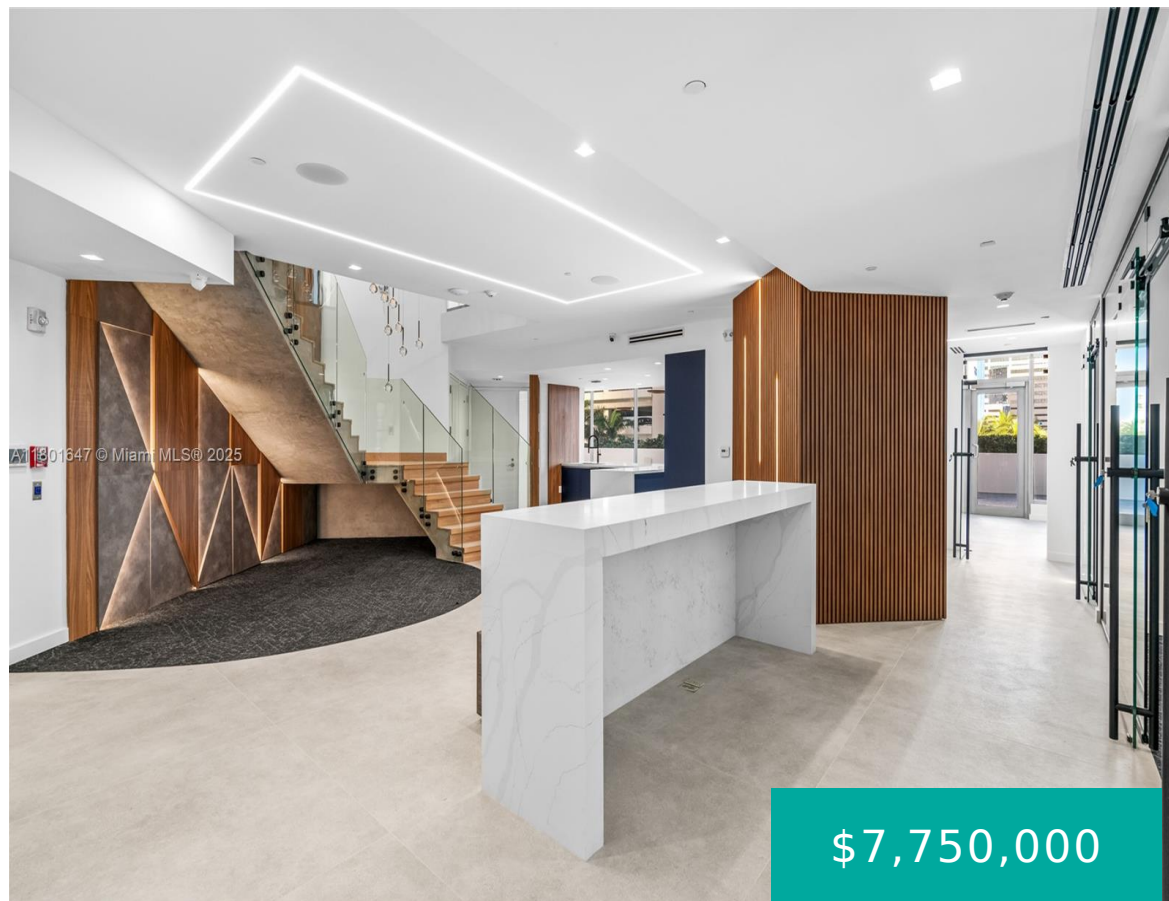


1300 BRICKELL BAY DR MIAMI FL 33131 1300 BRICKELL BAY DR CU6

<https://www.cays.com>



\$7,750,000

BRICKELLHOUSE CONDO UNIT COMMERCIAL #6 UNDIV 1.347622% INT IN COMMON ELEMENTS OFF REC 28283-3663 New 4,768sqft lux office in Brickell a blend of sophistication and functionality. Two stories, 12 offices, 2 kitchens, key code access, media closet (CAT 6 and fiber cable) 4+ terabits, & audio speaker & Sonos system already pre-installed. Enjoy the convenience [...]

- 0 baths
- CommercialSale, Office
- CommercialSale
- Active

Basics

Category: CommercialSale

Status: Active

Lot size: 1, 1 sq ft

County: Miami-Dade

Type: CommercialSale, Office

Bathrooms: 0 baths

Year built: 2014



Property details

Lot Size Square Feet: 1

Parcel Number: 33131

Rooms & Units Description

Unit Number: CU6

Location Details

County Or Parish: Miami-Dade

Zoning Description: 6407

Building Details

Structure Type: Office

Floor covering: Tile

Amenities & Features

Security Features: SecuritySystem

Expenses, Fees & Taxes

Tax Annual Amount: \$70,726

Miscellaneous

List Office Name: One Sotheby's International Realty

Listing Terms: OwnerMayCarry



Miscellaneous

Above Grade Finished **Virtual Tour URL:** https://www.youtube.com/watch?v=HdXRz8_HIkE
Area: Miami, FL

Courtesy of

Office Name: One Sotheby's International Realty

