

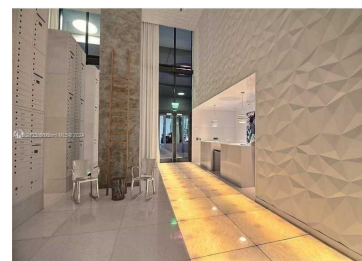
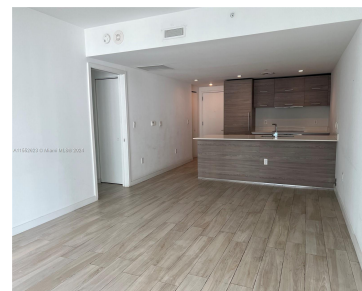
1300 S MIAMI AVE 1011 MIAMI FL 33130

<https://www.cays.com>



\$689,000

© Miami MLS® 06/2017



Exclusive 2 bedroom, 2 bathroom, split floor plan apartment in SLS Brickell, best location, steps from Financial District, Mary Brickell Village and Citicentre Mall. Porcelain flooring, Italian kitchen cabinets, stainless steel appliances, large balcony, blackout curtains and roller shade, custom built closets. Painted in white. Ready to move in. Full amenities include: 2 pools, jacuzzi, [...]

- 2 beds
- 2 baths
- Condominium
- Residential
- Active
- 868 sq ft

## Basics

**Bathrooms Full:** 2

**Category:** Residential

**Status:** Active

**Bathrooms:** 2 baths

**Year built:** 2016

**Lot Size Units:** Square Feet

**Type:** Condominium

**Bedrooms:** 2 beds

**Area:** 868 sq ft



---

## Property details

**Total Building Area:** 868

**Subdivision Name:** 1300 S MIAMI AVENUE CONDO

**Parcel Number:** 01-41-39-126-3810 **Possession:** Closing & Funding

---

## Property Features

**Exterior Features:**

Security/High Impact Doors

**Interior Features:** Closet Cabinetry

**Pool Features:** Association

**Parking Features:** One Space

**Security Features:** Door Man

**Appliances:** Dryer,Dishwasher,Electric Range,Disposal,Microwave,Refrigerator,Washer

**Architectural Style:** High Rise

**Association Amenities:** Business Center,Playground,Pool,Sauna,Spa/Hot Tub

**Construction Materials:** Block

**Cooling:** Central Air,Electric

**Cooling Y/N:** 1

**Covered Spaces:** 1

**Flooring:** Tile

**Garage Spaces:** 1

**Garage Y/N:** 1

**Heating:** Central,Electric

**Heating Y/N:** 1

**Pets Allowed:** No

**View:** Other

**Entry Level:** 10

**Entry Location:** 10

**Property Attached Y/N:** 1

**Stories Total:** 50

---

## Rooms & Units Description

**Unit Number:** 1011

---

## Location Details

**County Or Parish:** Miami-Dade County



---

## Fees & Taxes

**Tax Annual Amount:** 8493

**Tax Year:** 2023

**Tax Legal Description:** 1300 S MIAMI AVENUE  
CONDO UNIT 1011 UNDIV 0.00188871% INT IN  
COMMON ELEMENTS OFF REC 28717-2894

**Association Fee:** 767

**Association Fee Frequency:** Monthly

**Association Fee Includes:**  
Amenities, Maintenance  
Structure, Sewer, Water

---

## Miscellaneous

**Public Survey Section:** 39

**Syndication Remarks:** Exclusive 2 bedroom, 2 bathroom, split floor plan apartment in SLS Brickell, best location, steps from Financial District, Mary Brickell, Citicentre.

**Year Built Details:** New  
Construction

---

## Courtesy of

**Office Name:** HQ Realty Int'l Group, LLC.

