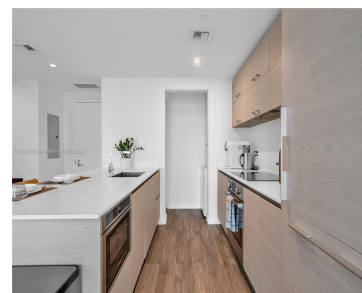
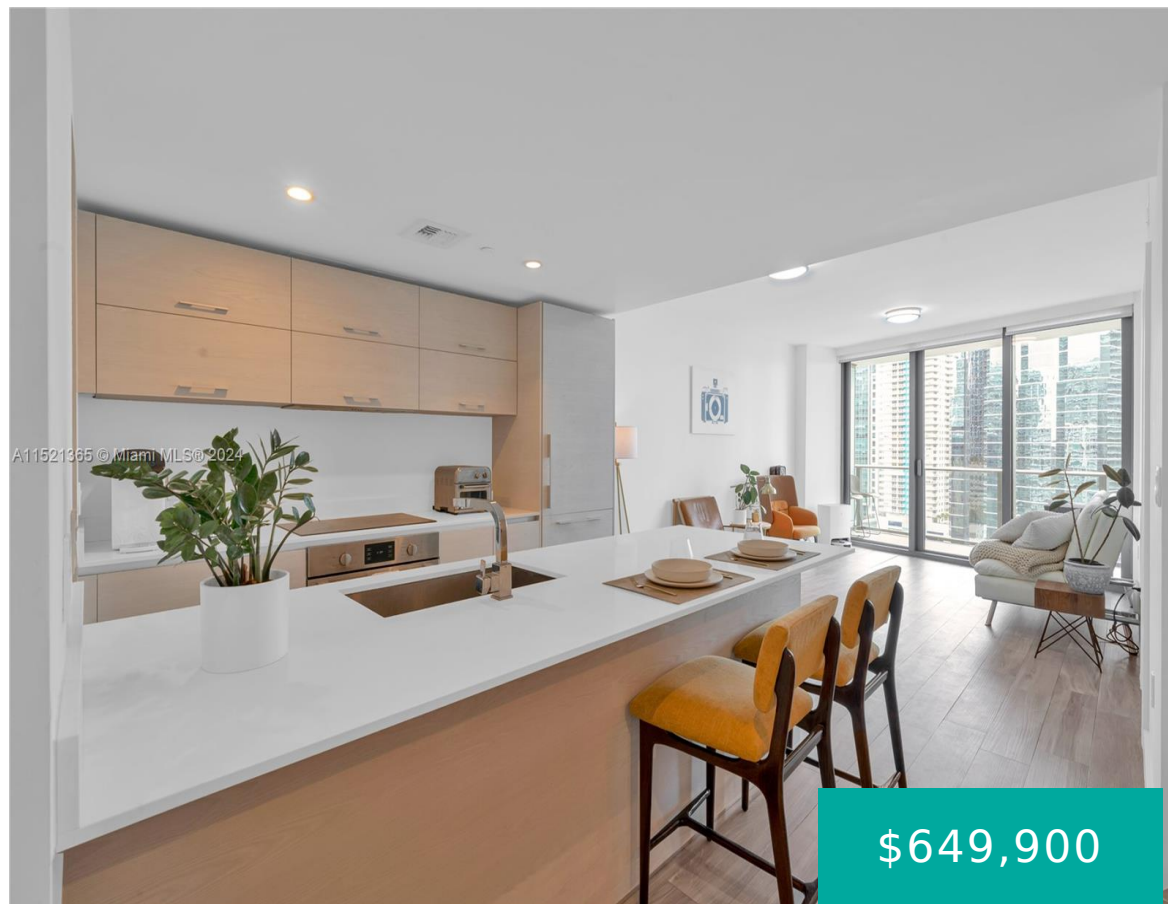


1300 S MIAMI AVE 1904 MIAMI FL 33130

<https://www.cays.com>



\$649,900

Gorgeous turnkey 1-bedroom, 1-bathroom plus den, at the luxurious SLS Brickell Residences. Oversized balcony that overlooks the beautiful city skyline & bay views. Unit comes with washer/dryer, blackout shades & rollers, custom-built extended closet, Bosch/Subzero appliances, and a den for an office set up or extra space for guests. Experience resort-style amenities (including rooftop pools [...])

- 1 bed
- 1 bath
- Condominium
- Residential
- Active
- 699 sq ft

Basics

Bathrooms Full: 1

Category: Residential

Status: Active

Bathrooms: 1 bath

Year built: 2016

Lot Size Units: Square Feet

Type: Condominium

Bedrooms: 1 bed

Area: 699 sq ft



Property details

Direction Faces: East

Subdivision Name: 1300 S MIAMI AVENUE CONDO

Parcel Number: 01-41-39-126-1230 **Possession:** Closing & Funding

Property Features

Exterior Features: Balcony,Barbecue,Security/High Impact Doors

Waterfront Features: Bay Front

Parking Features:

Assigned,Attached,Covered,Garage,One Space,Valet

Appliances: Dryer,Dishwasher,Electric Water Heater,Disposal,Ice Maker,Microwave,Refrigerator,Self Cleaning Oven,Washer

Association Amenities: Billiard Room,Business Center,Cabana,Clubhouse,Fitness Center,Other,Sauna,Spa/Hot Tub,Elevator(s)

Cooling: Central Air

Covered Spaces: 1

Furnished: Negotiable

Garage Y/N: 1

Heating Y/N: 1

View: Bay,City,Intercoastal

Entry Level: 19

Patio and Porch Features: Balcony,Open

Waterfront Y/N: 1

Stories Total: 52

Interior Features: Built-in Features,Breakfast Area,Dual Sinks,Kitchen Island,Living/Dining Room,Separate Shower,Walk-In Closet(s),Bar

Window Features: Blinds,Impact Glass

Security Features: Elevator Secured,Intercom,Key Card Entry,Lobby Secured,Security Guard

Architectural Style: High Rise

Construction Materials: Block

Cooling Y/N: 1

Flooring: Other,Tile

Garage Spaces: 1

Heating: Central

Pets Allowed: Conditional,Yes

View Y/N: 1

Entry Location: 19

Property Attached Y/N: 1

Attached Garage Y/N: 1

Utilities: Cable Available

Rooms & Units Description



Unit Number: 1904

Location Details

County Or Parish: Miami-Dade County

Fees & Taxes

Tax Annual Amount: 8640

Tax Year: 2023

Tax Legal Description: 1300 S
MIAMI AVENUE CONDO UNIT 1904
UNDIV 0.00152098% INT IN
COMMON ELEMENTS OFF REC
28717-2894

Association Fee: 895

Association Fee Frequency:
Monthly

Association Fee Includes: Association
Management,Amenities,Maintenance
Grounds,Maintenance Structure,Pool(s),Recreation
Facilities,Roof,Security

Miscellaneous

Public Survey Township: 1

**Public
Survey
Section:**
39

Syndication Remarks: Gorgeous 1-bedroom, 1-bathroom + den, at the luxurious SLS Brickell Residences.
Oversized balcony overlooking the beautiful city skyline & bay views

**Year
Built
Details:**
Effective
Year
Built

Virtual Tour URL:

<https://www.dropbox.com/scl/fi/vu7w48k8gg82bbsnn04fb/SLS-1904.mov?rlkey=suvcqhxw8hz4eaxhb3i5bi90c&dl=0>

Courtesy of

Office Name: Luxe Properties

