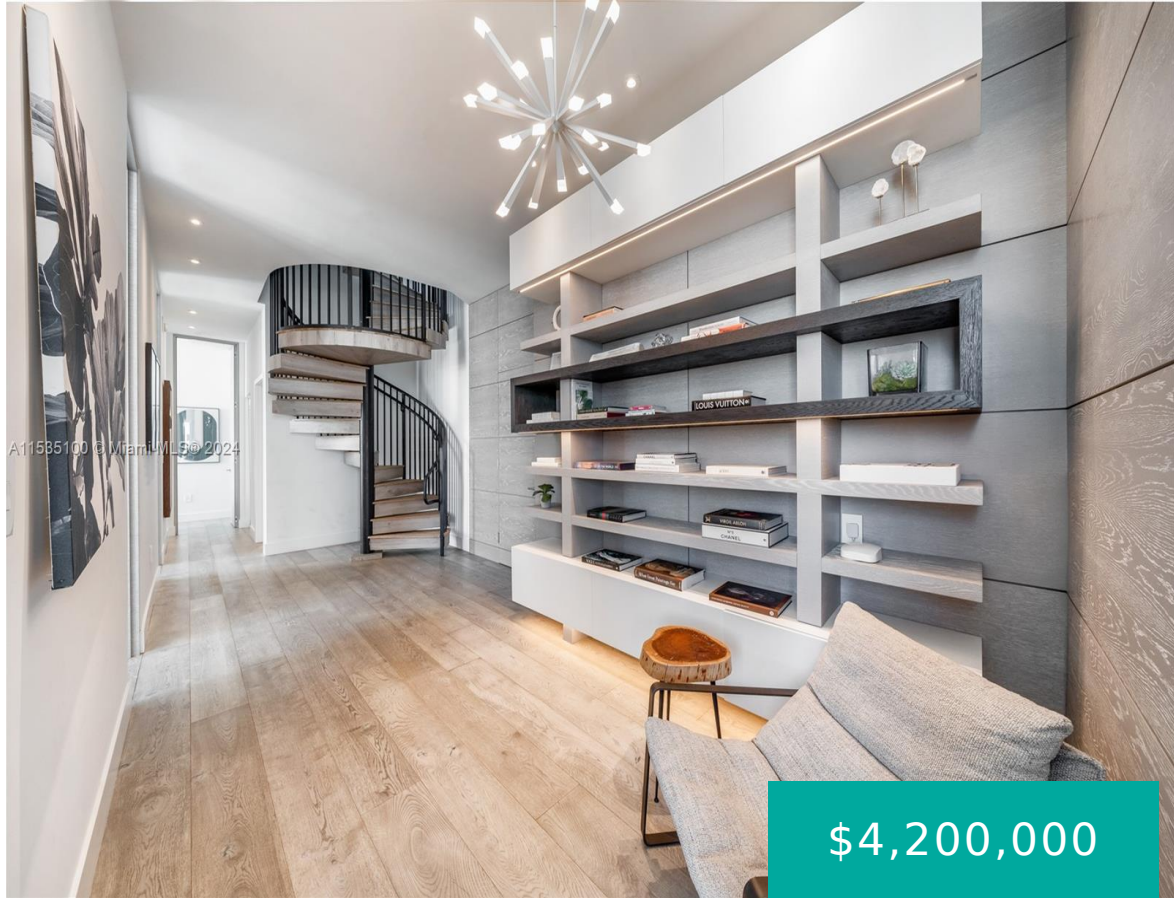


# 1300 S MIAMI AVE UPH4 MIAMI FL 33130

<https://www.cays.com>



Welcome to Upper Penthouse 4 at the SLS Brickell Luxury High Rise. This well designed sophisticated 2 story corner unit is turn key ready for your ultimate living experience. Fully Furnished 4 bed 4 bath with tasteful artwork flowing through every room. Enjoy ocean, city, sunrise & sunset views from your oversized wraparound balcony. Take [...]

- 4 beds
- 4 baths
- Condominium
- Residential
- Active
- 2010 sq ft

## Basics

**Bathrooms Half:** 1

**Lot Size Units:** Square Feet

**Type:** Condominium

**Bedrooms:** 4 beds

**Area:** 2010 sq ft

**Bathrooms Full:** 3

**Category:** Residential

**Status:** Active

**Bathrooms:** 4 baths

**Year built:** 2016



---

## Property details

**Total Building Area:** 2010

**Subdivision Name:** 1300 S MIAMI AVENUE CONDO

**Parcel Number:** 01-41-39-126-4500 **Possession:** Close Of Escrow

---

## Property Features

**Exterior Features:** Balcony,Barbecue,Security/High Impact Doors

**Interior Features:** Built-in Features,Closet Cabinetry,Kitchen Island,Pantry,Walk-In Closet(s),Elevator

**Waterfront Features:** Ocean Front

**Pool Features:** Association

**Parking Features:** Assigned,Covered,Two or More Spaces

**Security Features:** Elevator Secured,Key Card Entry,Lobby Secured,Smoke Detector(s)

**Appliances:** Dryer,Dishwasher,Electric Range,Disposal,Microwave,Refrigerator,Washer

**Architectural Style:** High Rise,Penthouse

**Association Amenities:** Business Center,Cabana,Clubhouse,Elevator(s),Fitness Center,Playground,Pool,Sauna,Spa/Hot Tub

**Construction Materials:** Block

**Cooling:** Central Air

**Cooling Y/N:** 1

**Covered Spaces:** 2

**Flooring:** Wood

**Furnished:** Furnished

**Garage Spaces:** 2

**Garage Y/N:** 1

**Heating:** Central

**Heating Y/N:** 1

**Pets Allowed:** Dogs OK,Yes

**View:** City,Ocean,Water

**View Y/N:** 1

**Entry Level:** 53

**Entry Location:** 53

**Patio and Porch Features:** Balcony,Open

**Property Attached Y/N:** 1

**Stories Total:** 53

---

## Rooms & Units Description

**Unit Number:** UPH4



---

## Location Details

**County Or Parish:** Miami-Dade County

---

## Fees & Taxes

**Tax Annual Amount:** 45081

**Tax Year:** 2023

**Tax Legal Description:** 1300  
S MIAMI AVENUE CONDO UNIT  
UPH4 UNDIV 0.00437363% INT  
IN COMMON ELEMENTS OFF  
REC 28717-2894

**Association Fee:** 1776

**Association Fee Frequency:**  
Monthly

**Association Fee Includes:** Association  
Management,Amenities,Common Areas,Hot  
Water,Insurance,Maintenance  
Grounds,Parking,Pool(s),Recreation  
Facilities,Roof,Sewer,Security,Trash,Water

---

## Miscellaneous

**Public Survey Township:** 1

**Public Survey  
Section:** 39

**Syndication Remarks:** Welcome to Unparallel Luxury Living on the Upper  
Penthouse 4 at the SLS Brickell High Rise

**Year Built  
Details:** New  
Construction

**Virtual Tour URL:**

<https://www.propertypanorama.com/instaview/mia/A11535100>

---

## Courtesy of

**Office Name:** Keller Williams Miami Beach Re

