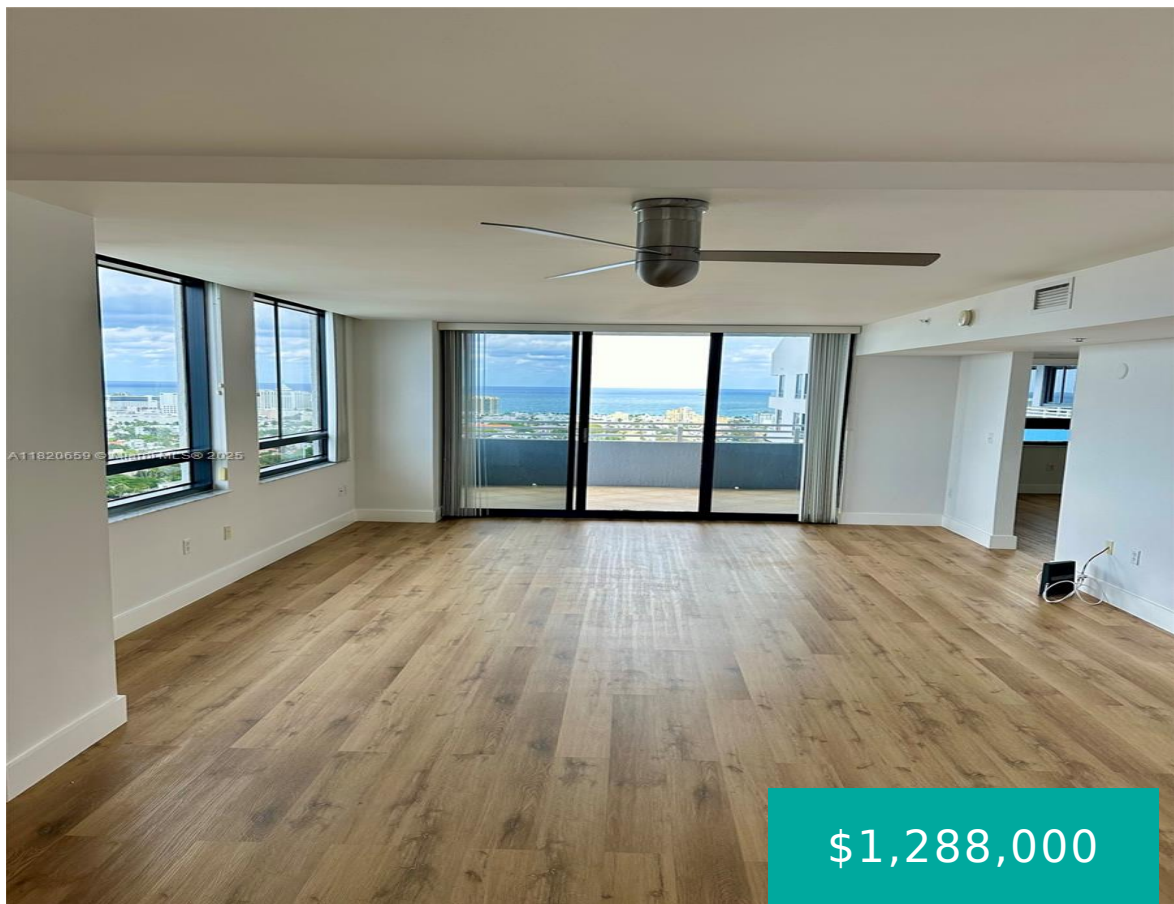


1330 WEST AVE MIAMI BEACH FL 33139 1330 WEST AVE 3007

<https://www.cays.com>



\$1,288,000

THE WAVERLY AT SOUTH BEACH CONDO UNIT 3007 UNDIV 1269/446141 INT IN COMMON ELEMENTS OFF REC 21014-4505 COC 23388-4747 04 2005 1 As soon as you walk inside, you'll be submerged into an oasis of simultaneous splendor and tranquil elegance in this newly renovated corner unit featuring impeccable finishes throughout Enjoy spectacular 360-degree unobstructed views [...]

- 2 beds
- 2, 2 baths
- Condominium, Residential
- Condominium, Residential
- Active
- 1269 sq ft

Basics



Category: Condominium, Residential **Type:** Condominium, Residential

Status: Active

Bedrooms: 2 beds

Bathrooms: 2, 2 baths

Half baths: 0 half baths

Floors: 42 floors

Area: 1269 sq ft

Year built: 2001

Property Condition: UpdatedRemodeled

View: Bay,Intercoastal,Ocean

Subdivision Name: THE WAVERLY AT SOUTH BEAC

County: Miami-Dade

Property details

Subdivision Name: THE WAVERLY AT SOUTH BEAC

Parcel Number: 33139

Property Features

Building Features: ExteriorLighting

Waterfront Features:

Bayfront,IntracoastalAccess,Seawall

Parking Features:

AttachedCarport,Attached,Garage,TwoOrMoreSpaces,GarageDoorOpener

Carport Y/N: 1

Cooling: CentralAir

Cooling Y/N: 1

Garage Y/N: 1

Heating: Central

Heating Y/N: 1

Pets Allowed: DogsOk,Yes

View: Bay,Intercoastal,Ocean

View Y/N: 1

Waterfront Y/N: 1

Stories Total: 42

Rooms & Units Description

Unit Number: 3007

Location Details



County Or Parish: Miami-Dade
Elementary School: North Beach
High School: Miami Beach

Directions: GPS
Middle/Junior School: Nautilus

Building Details

Architectural Style: HighRise
Covered Spaces: 4
Floor covering: Parquet, Terrazzo

Construction Materials: Block
Garage Spaces: 2

Amenities & Features

Pool Features: Association

Security Features:
DoorMan,KeyCardEntry,LobbySecured,FireSprinklerSystem,SmokeDetectors

Association Amenities:
BusinessCenter,FitnessCenter,Barbecue,Other,PicnicArea,Pool,TennisCourts,Trash,Elevators

Utilities: CableAvailable

Cooling: CentralAir

Furnished: Unfurnished

Interior Features:
BedroomOnMainLevel,LivingDiningRoom,MainLivingAreaEntryLevel,SplitBedrooms,WalkInClosets

Features: ExteriorLighting

Parking Features:
AttachedCarport,Attached,Garage,TwoOrMoreSpaces,GarageDoorOpener

Patio & Porch Features: Balcony,Deck,Open

Waterfront Features: Bayfront,IntracoastalAccess,Seawall

Window Features: Blinds,Drapes

Exterior Features: Balcony,Barbecue,Courtyard,Deck

Heating: Central

Appliances:
Dryer,Dishwasher,ElectricRange,Microwave,Other,Refrigerator,Washer

Nearby Schools

Middle Or Junior School: Nautilus
High School: Miami Beach

Elementary School: North Beach

Expenses, Fees & Taxes

Association Fee: \$1,590

Tax Year: 2024

Tax Annual Amount: \$12,880

Fees & Taxes



Association Fee: 1590

Miscellaneous

Association Fee Frequency: Monthly **List Office Name:** Related ISG Realty, LLC.

Listing Terms: Cash,Conventional

Miscellaneous

Above Grade

Virtual Tour URL:

Finished Area: <https://www.propertypanorama.com/instaview/mia/A11820659>

Miami Beach, FL

Courtesy of

Office Name: Related ISG Realty, LLC.

