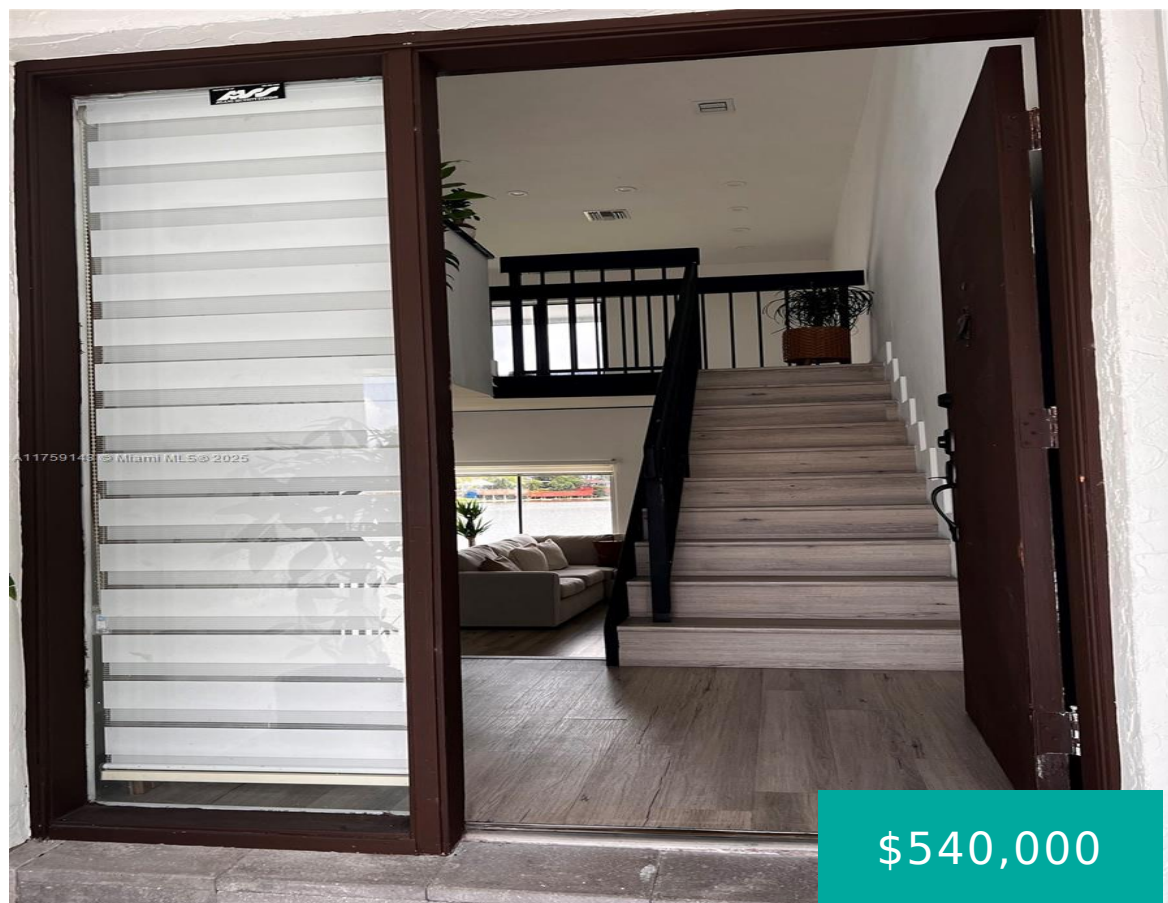


1351 124TH CT MIAMI FL 33184 1351 SW 124TH CT B5

<https://www.cays.com>



VILLA VENEZIA CONDO UNIT 5-B UNDIV 1/164 INT IN COMMON ELEMENTS OFF  
REC 11223-1101 OR 13575-2415 0188 4 COC 25682-0352 05 2007 1

Welcome to beautiful and remodeled 3/2.5 townhome in Villa Venezia. This home perfectly combines style and practicality. Enter the spacious living area, where natural light floods the space, highlighting the stunning lake [...]

- 3 beds
- 2, 3 baths
- Condominium, Residential
- Condominium, Residential
- Active
- 1640 sq ft

## Basics



**Bathrooms Half:** 1

**Category:** Condominium, Residential

**Type:** Condominium, Residential **Status:** Active

**Bedrooms:** 3 beds

**Bathrooms:** 2, 3 baths

**Half baths:** 1 half bath

**Floors:** 2 floors

**Area:** 1640 sq ft

**Year built:** 1984

**View:** Lake

**Subdivision Name:** VILLA VENEZIA CONDO PH VI

**County:** Miami-Dade

---

## Property details

**Subdivision Name:** VILLA VENEZIA CONDO PH VI

**Parcel Number:** 33184

---

## Property Features

**Waterfront Features:** LakeFront

**Parking Features:** Guest,TwoOrMoreSpaces

**Cooling:** CentralAir,CeilingFans

**Cooling Y/N:** 1

**Heating:** Electric

**Heating Y/N:** 1

**Pets Allowed:** Conditional,Yes

**View:** Lake

**View Y/N:** 1

**Waterfront Y/N:** 1

**Stories Total:** 2

---

## Rooms & Units Description

**Unit Number:** B5

---

## Location Details

**County Or Parish:** Miami-Dade

**Elementary School:** Mattews; Wesley

**Middle/Junior School:** Paul Bell

**High School:** S Plantation



---

## Building Details

**Architectural Style:** Other

**Floor covering:** Vinyl

**Construction Materials:** Block

---

## Amenities & Features

**Pool Features:** Association

**Security Features:** ComplexFenced,PhoneEntry,SecurityGuard

**Association Amenities:** Clubhouse,Pool

**Cooling:** CentralAir,CeilingFans

**Heating:** Electric

**Appliances:**

Dryer,Dishwasher,ElectricRange,ElectricWaterHeater,Disposal,IceMaker,Microwave,Refrigerator

**Parking Features:** Guest,TwoOrMoreSpaces

**Patio & Porch Features:** Patio

**Waterfront Features:** LakeFront

**Exterior Features:** Patio,StormSecurityShutters

**Interior Features:**

BedroomOnMainLevel,FirstFloorEntry,LivingDiningRoom

---

## Nearby Schools

**Middle Or Junior School:** Paul Bell

**High School:** S Plantation

**Elementary School:** Mattews; Wesley

---

## Expenses, Fees & Taxes

**Association Fee:** \$434

**Tax Year:** 2024

**Tax Annual Amount:** \$5,715

---

## Fees & Taxes

**Association Fee:** 434

---

## Miscellaneous



**Association Fee Frequency:** Monthly

**Listing Terms:** Cash,Conventional

**List Office Name:** Miami New Realty

**Attribution Contact:** nilemaycu@yahoo.com

---

## Miscellaneous

**Above Grade**      **Virtual Tour URL:**

**Finished Area:** <https://www.propertypanorama.com/instaview/mia/A11759143>  
Miami, FL

---

## Courtesy of

**Office Name:** Miami New Realty

