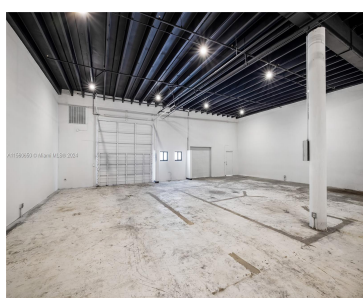
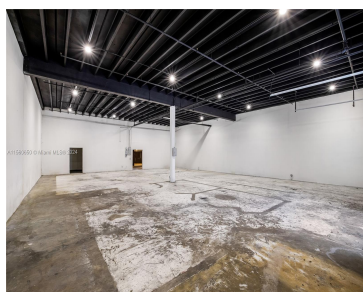
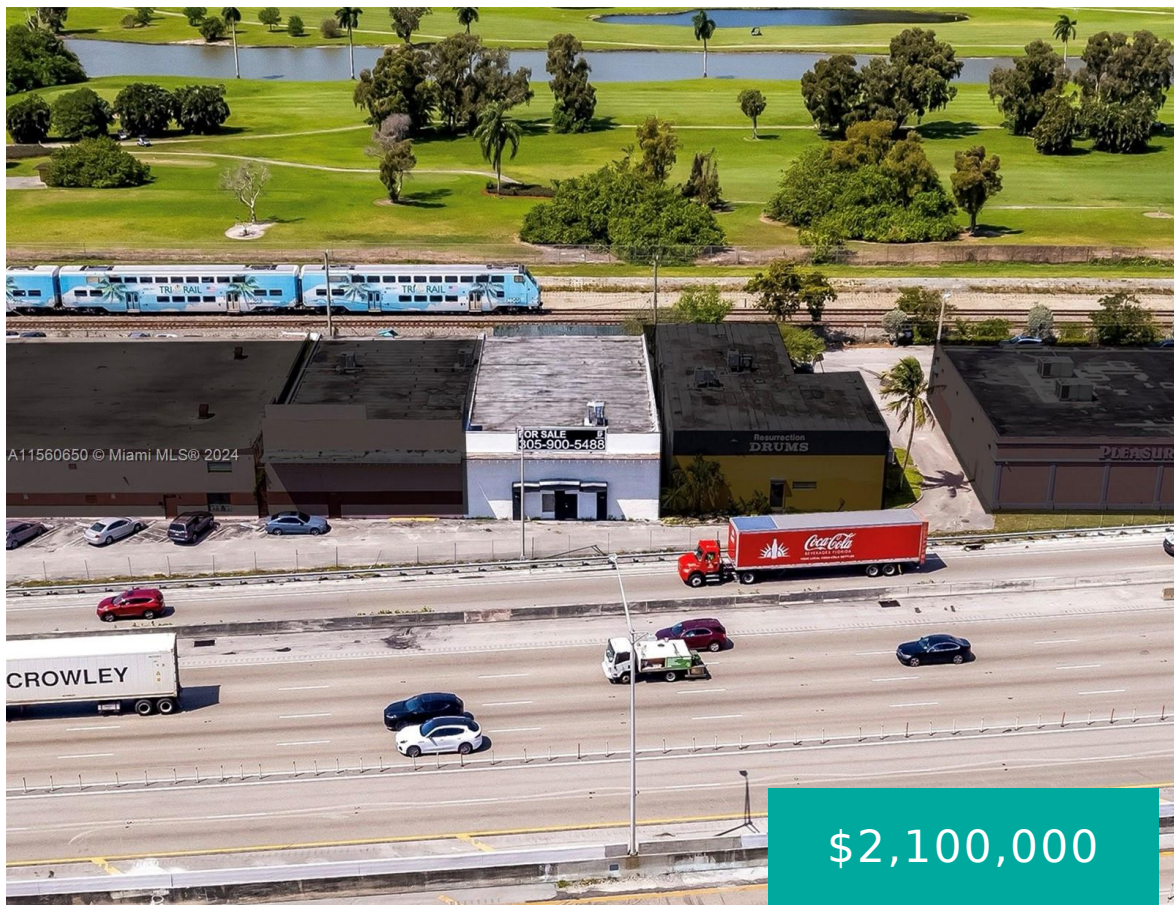


1401 S 30TH AVE HOLLYWOOD FL 33020

<https://www.cays.com>



Rare flex property with direct frontage on I-95 with retail / warehouse / showroom / office possibilities and has extremely high visibility to the 250,000 vehicles passing by on I-95 per day. The building is 5,982 SF and has a 16-foot clear ceiling height, 2 loading doors, a 2-story office /showroom portion, and 4 bathrooms. [...]

- Commercial
- Commercial Sale
- Active

Basics

Lot Size Units: Square Feet

Type: Commercial

Year built: 1961

Category: Commercial Sale

Status: Active

Property details



Total Building Area: 5982
Parcel Number: 514221062750
Lot Size Area: 5696

Lot Size Square Feet: 5696
Road Frontage Type: Highway
Structure Type: Industrial,Retail

Property Features

Security Features: Fire Sprinkler System
Cooling: Central Air
Electric: 3 Phase
Roof: Concrete

Construction Materials: Block
Cooling Y/N: 1
Sewer: Public Sewer
Water Source: Public

Location Details

County Or Parish: Broward County

Zoning Description: IM-2

Fees & Taxes

Tax Annual Amount: 15070

Tax Legal Description: SOUTH HOLLYWOOD AMD PLAT 4-10 B LOT 25 N 52.49 OF S 66,LOT 26 N 52.49 OF S 66,LOT 24 N 52.49 OF S 66 POR LYING W OF W R/W/L OF ST RD 9 LESS

Miscellaneous

Public Survey Section: 21

Syndication Remarks: Call or email listing agent to coordinate showings.

Virtual Tour URL:
<https://www.propertypanorama.com/instaview/mia/A11560650>

Courtesy of



Office Name: United Realty Group Inc

