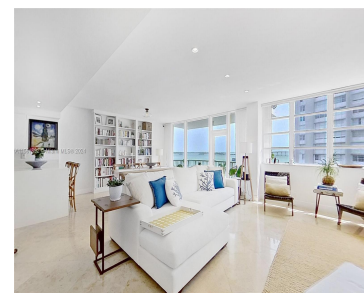
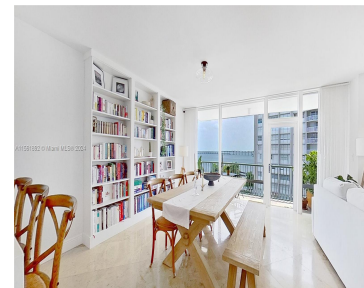
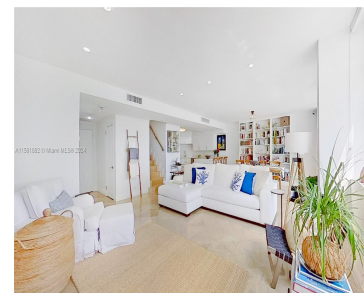
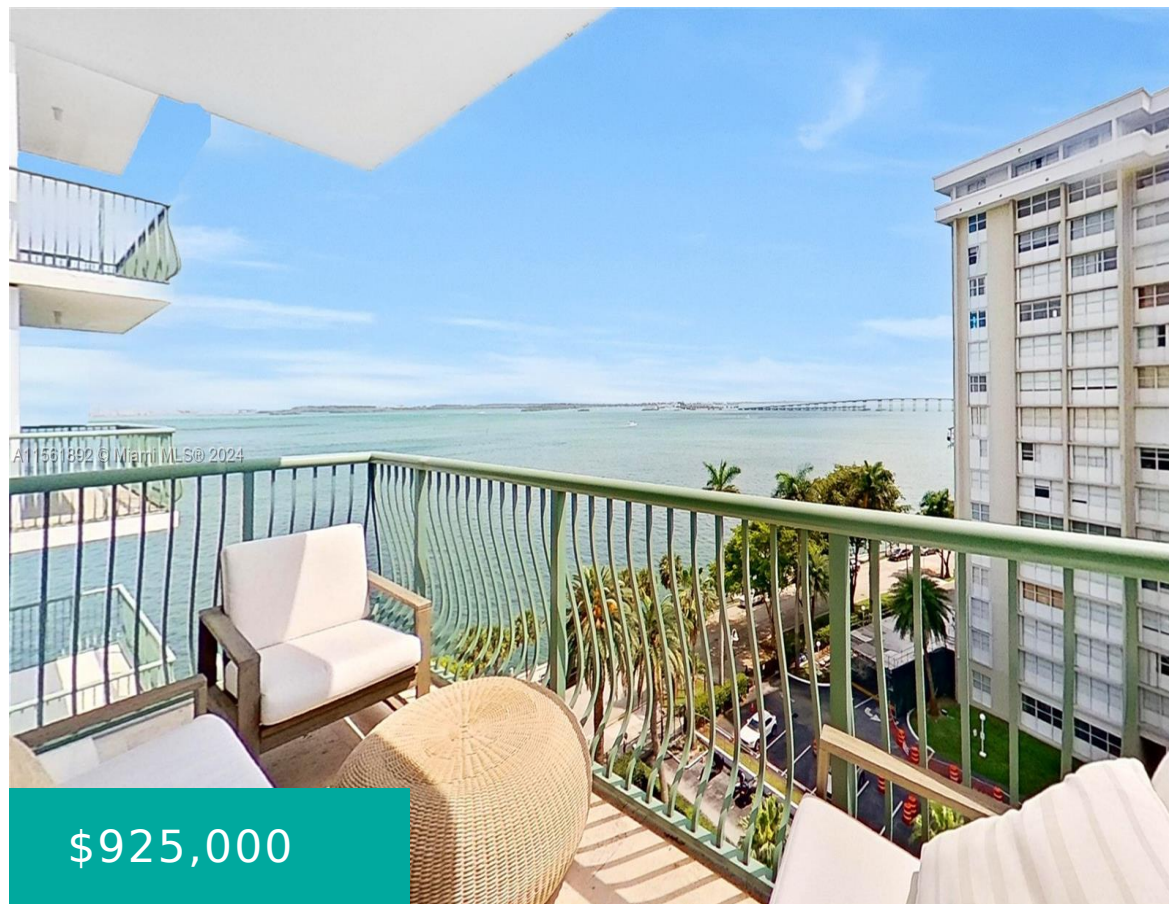


1408 BRICKELL BAY DR 808 MIAMI FL 33131

<https://www.cays.com>



Unparalleled WATERFRONT RESIDENCE! Nestled in the coveted Brickell Bay Tower, this exquisite two-stories townhouse epitomizes elegance and comfort, with BREATHTAKING VIEWS OF THE OCEAN, Key Biscayne, and Brickell Key, from every room, along with its amazing balcony-terraces. PERFECTLY REMODELED, it features marble floors, a pristine white kitchen, quartz countertops, stainless steel appliances, large walk-in closets, [...]

- 2 beds
- 3 baths
- Condominium
- Residential
- Active
- 1574 sq ft

Basics

Bathrooms Half: 1

Lot Size Units: Square Feet

Type: Condominium

Bedrooms: 2 beds

Area: 1574 sq ft

Bathrooms Full: 2

Category: Residential

Status: Active

Bathrooms: 3 baths

Year built: 1964



Property details

Total Building Area: 1574

Direction Faces: Southeast

Subdivision Name: BRICKELL BAY TOWER CONDO

Parcel Number: 01-41-40-026-1200

Possession: Closing & Funding

Property Features

Exterior Features:

Balcony,Barbecue,Storm/Security Shutters

Laundry Features: Common Area

Waterfront Features: Bay

Front,Navigable Water,Ocean Front,Point Lot

Pool Features: Association,Heated

Security Features: Closed Circuit Camera(s),Key Card Entry,Security Guard,Smoke Detector(s)

Architectural Style: High Rise,Split-Level

Construction Materials: Block

Cooling Y/N: 1

Flooring: Marble

Garage Y/N: 1

Pets Allowed: Size Limit,Yes

View Y/N: 1

Entry Location: 8

Property Attached Y/N: 1

Stories Total: 14

Interior Features: Built-in Features,Bedroom on Main Level,Breakfast Area,Closet Cabinetry,Dining Area,Separate/Formal Dining Room,Dual Sinks,First Floor Entry,Kitchen Island,Living/Dining Room,Pantry,Sitting Area in Primary,Separate Shower,Upper Level Primary,Bar

Accessibility Features: Wheelchair Access

Window Features: Blinds

Parking Features:

Assigned,Covered,Detached,Garage,Two or More Spaces,Garage Door Opener

Appliances: Dryer,Dishwasher,Electric Range,Electric Water Heater,Disposal,Ice Maker,Microwave,Refrigerator,Self Cleaning Oven,Trash Compactor,Washer

Association Amenities: Clubhouse,Fitness Center,Hobby Room,Laundry,Library,Barbecue,Picnic Area,Pier,Pool,Storage,Trash,Elevator(s)

Cooling: Central Air

Covered Spaces: 2

Garage Spaces: 2

Heating: Other

View: Bay,Ocean,Pool

Entry Level: 8

Patio and Porch Features: Balcony,Open

Waterfront Y/N: 1

Utilities: Cable Available



Rooms & Units Description

Unit Number: 808

Location Details

County Or Parish: Miami-Dade County

Directions: Kindly follow GPS instructions.

Fees & Taxes

Tax Annual Amount: 12232

Tax Year: 2023

Tax Legal Description: BRICKELL
BAY TOWER CONDO UNIT 808 - 8TH
FL UNDIV .83766% INT IN COMMON
ELEMENTS CLERKS FILE
73R-310362 OR 20459-2306 0502 1
COC 23884-0487 0

Association Fee: 1106

Association Fee Frequency:
Monthly

Association Fee Includes: Amenities,Common
Areas,Hot Water,Insurance,Laundry,Maintenance
Grounds,Maintenance Structure,Parking,Pool(s),Recreation
Facilities,Security,Trash,Water

Miscellaneous

Public Survey Township: 1

**Public Survey
Section:** 40

Syndication Remarks: 2/2.5 Townhome Unit! Great remodeling, marble
floors, washer and dryer inside the unit, and rare 2 covered assigned parking &
visitor parking.

**Year Built
Details:** Resale

Virtual Tour URL: <https://3ddepartment.com/embed/sAAKvyQ==>

Courtesy of



Office Name: Brown Harris Stevens

