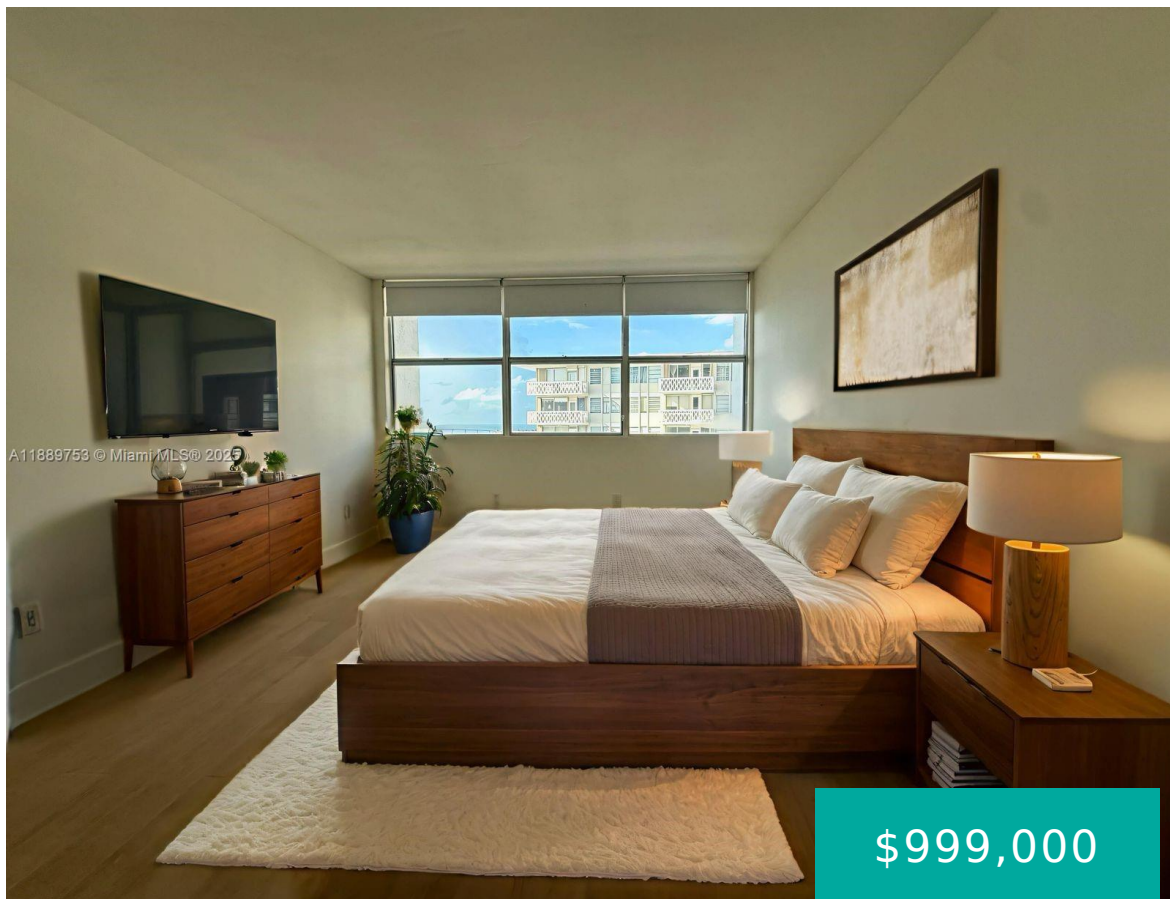


# 1420 BRICKELL BAY DR MIAMI FL 33131 1420 BRICKELL BAY DR 1203A

<https://www.cays.com>



BAYSHORE PLACE CONDO UNIT 1203-A 12FL UNDIV 0.913276 INT IN COMMON ELEMENTS CLERKS FILE 73R187044 FAU 01-0210-050-8800 Direct Ocean View | Fully Renovated 3 Bed / 2 Bath in Prime Brickell Wake up to endless ocean views in this stunningly renovated 3BR/2BA condo with direct water views from every bedroom. Featuring over 1,400 sqft of [...]

- 3 beds
- 2, 2 baths
- Condominium, Residential
- Condominium, Residential
- Active
- 1433 sq ft

## Basics



**Category:** Condominium, Residential  
**Status:** Active  
**Bathrooms:** 2, 2 baths  
**Floors:** 17 floors  
**Year built:** 1973  
**Subdivision Name:** BAYSHORE PLACE CONDO

**Type:** Condominium, Residential  
**Bedrooms:** 3 beds  
**Half baths:** 0 half baths  
**Area:** 1433 sq ft  
**View:** Bay  
**County:** Miami-Dade

---

## Property details

**Subdivision Name:** BAYSHORE PLACE CONDO

**Parcel Number:** 33131

---

## Property Features

**Waterfront Features:** Bayfront

**Parking Features:** Assigned, Guest, TwoOrMoreSpaces

**Cooling:** CentralAir

**Cooling Y/N:** 1

**Heating:** Central

**Heating Y/N:** 1

**Pets Allowed:** No

**View:** Bay

**View Y/N:** 1

**Waterfront Y/N:** 1

**Stories Total:** 17

---

## Rooms & Units Description

**Unit Number:** 1203A

---

## Location Details

**County Or Parish:** Miami-Dade

**Elementary School:** Southside

**Middle/Junior School:** Shenandoah



---

## Building Details

**Architectural Style:** Other

**Floor covering:** Tile

**Construction Materials:** Block

---

## Amenities & Features

**Pool Features:** Association

**Security Features:** KeyCardEntry

**Association Amenities:** FitnessCenter,Pool

**Cooling:** CentralAir

**Heating:** Central

**Appliances:**

Dishwasher,ElectricRange,ElectricWaterHeater,Disposal,Microwave,Refrigerator

**Parking Features:**

Assigned,Guest,TwoOrMoreSpaces

**Patio & Porch Features:** Open,Porch

**Waterfront Features:** Bayfront

**Exterior Features:** Porch

**Interior Features:**

BedroomOnMainLevel,FirstFloorEntry,Elevator

---

## Nearby Schools

**Middle Or Junior School:** Shenandoah

**Elementary School:** Southside

---

## Expenses, Fees & Taxes

**Association Fee:** \$1,200

**Tax Year:** 2024

**Tax Annual Amount:** \$11,849

---

## Fees & Taxes

**Association Fee:** 1200

---

## Miscellaneous



**Association Fee Frequency:**  
Monthly

**List Office Name:** Homes Real Estate Group Inc.

**Listing Terms:** Cash,Conventional

**Attribution Contact:** magdalena.fuenzalidah@gmail.com

---

## Miscellaneous

**Above Grade**

**Virtual Tour URL:**

**Finished Area:** <https://www.propertypanorama.com/instaview/mia/A11889753>  
Miami, FL

---

## Courtesy of

**Office Name:** Homes Real Estate Group Inc.

