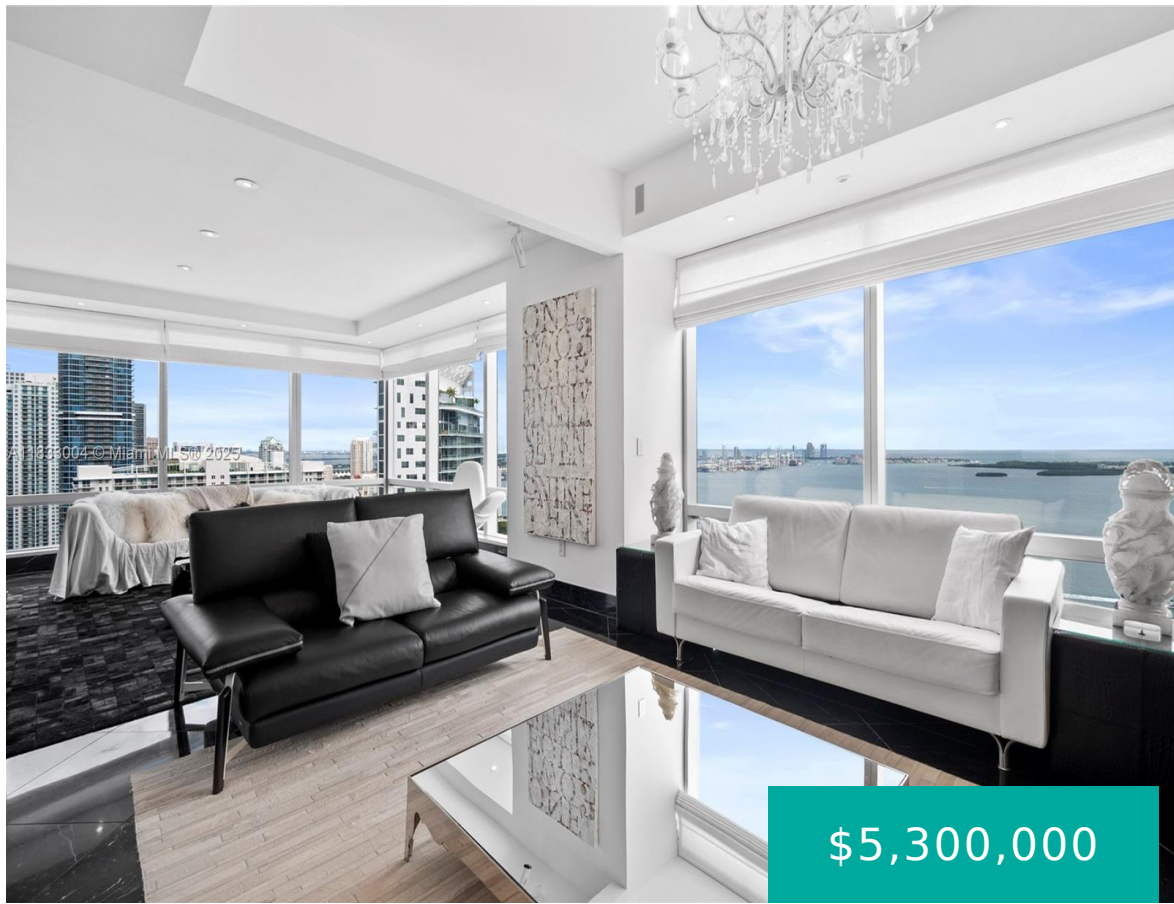


1425 BRICKELL AVE MIAMI FL 33131 1425 BRICKELL AVE 42E

<https://www.cays.com>



MILLENNIUM TOWER RESIDENCES CONDO UNIT 42E UNDIV 0.007396% INT IN COMMON ELEMENTS OFF REC 21766-4639 This exceptional 3-bedroom, 4-bath residence at the prestigious Four Seasons Residences offers unobstructed panoramic views of Biscayne Bay, Atlantic Ocean, and Miami skyline — a breathtaking backdrop from sunrise to sunset. A generous family room offers the option to convert [...]

- 3 beds
- 4, 4 baths
- Condominium, Residential
- Condominium, Residential
- Active
- 3357 sq ft

Basics



Category: Condominium, Residential

Status: Active

Bathrooms: 4, 4 baths

Floors: 70 floors

Year built: 2003

Subdivision Name: MILLENNIUM TOWER RESIDENC

Type: Condominium, Residential

Bedrooms: 3 beds

Half baths: 0 half baths

Area: 3357 sq ft

View: Bay

County: Miami-Dade

Property details

Subdivision Name: MILLENNIUM TOWER RESIDENC

Parcel Number: 33131

Property Features

Waterfront Features: Bayfront

Cooling: CentralAir,Electric

Garage Y/N: 1

Heating Y/N: 1

View: Bay

Waterfront Y/N: 1

Parking Features: Covered,TwoOrMoreSpaces

Cooling Y/N: 1

Heating: Electric

Pets Allowed: Conditional,Yes

View Y/N: 1

Stories Total: 70

Rooms & Units Description

Unit Number: 42E

Location Details

County Or Parish: Miami-Dade



Building Details

Architectural Style: HighRise

Covered Spaces: 2

Floor covering: Hardwood, Marble, Wood

Construction Materials: Brick,Block

Garage Spaces: 2

Amenities & Features

Pool Features: Association

Security Features: DoorMan,KeyCardEntry,LobbySecured,FireSprinklerSystem

Association Amenities: BusinessCenter,Clubhouse,FitnessCenter,Pool,Elevators

Window Features: ImpactGlass

Exterior Features: Balcony

Interior Features:

BedroomOnMainLevel,DualSinks,EatInKitchen,Elevator,FirstFloorEntry,LivingDiningRoom,SeparateShower,WalkInClosets

Parking Features:

Covered,TwoOrMoreSpaces

Patio & Porch Features:

Balcony,Open

Waterfront Features: Bayfront

Cooling: CentralAir,Electric

Heating: Electric

Appliances:

Dryer,Dishwasher,Microwave,Washer

Expenses, Fees & Taxes

Association Fee: \$4,218

Tax Year: 2024

Tax Annual Amount: \$78,547

Fees & Taxes

Association Fee: 4218

Miscellaneous

Association Fee Frequency: Monthly **List Office Name:** Douglas Elliman

Listing Terms: Cash,Conventional

Miscellaneous



Above Grade **Virtual Tour URL:**
Finished Area: <https://www.propertypanorama.com/instaview/mia/A11833004>
Miami, FL

Courtesy of

Office Name: Douglas Elliman

