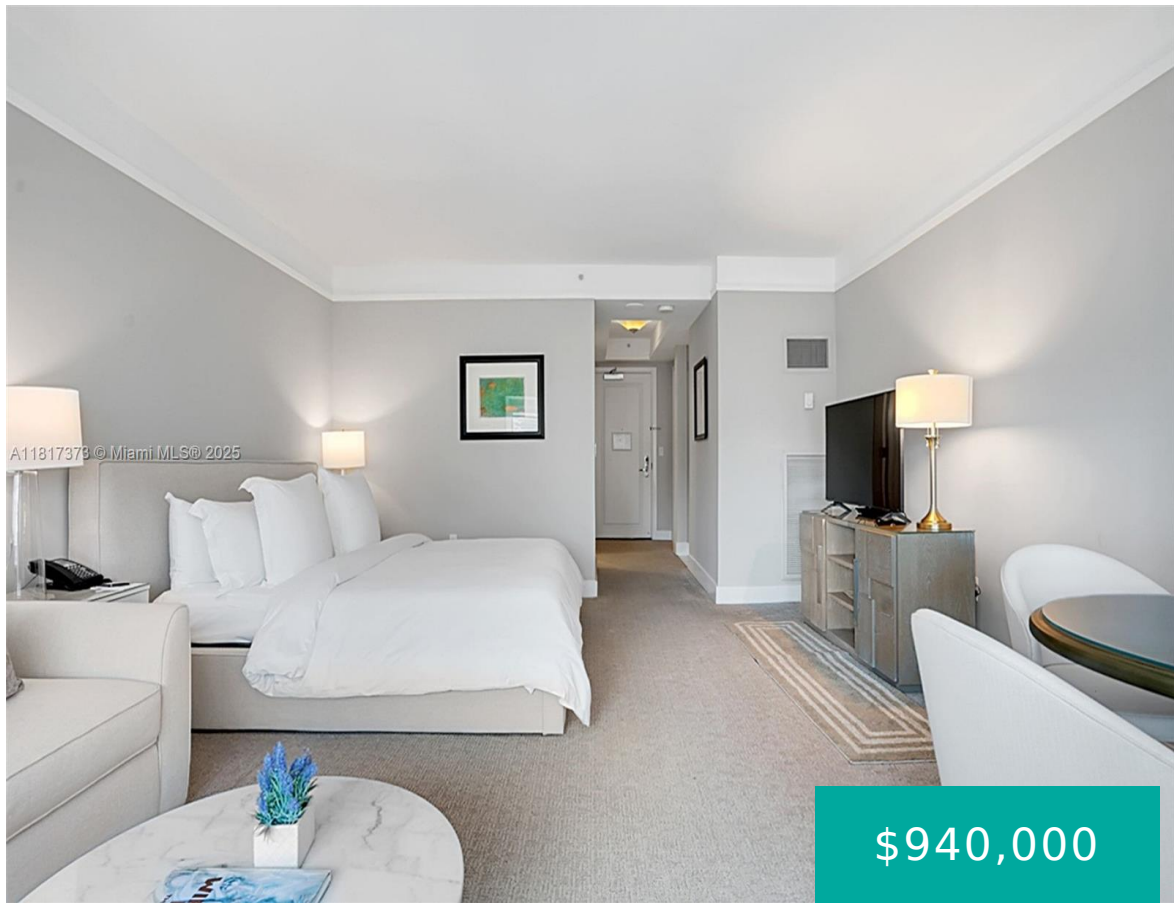


1435 BRICKELL AVE MIAMI FL 33131 1435 BRICKELL AVE 3111

<https://www.cays.com>



MILLENNIUM TOWER CONDOMINIUM HOTEL CONDO UNIT 3111 UNDIV
0.5557% INT IN COMMON ELEMENTS OFF REC 21766-4820 COC 23670-0976
07 2005 1 Live above it all at Four Seasons Residences Miami in Brickell. This fully furnished unit offers partial bay and city views, full kitchen, spacious walk-in closet, generous bathroom, 1 garage space, and 1 storage [...]

- 0 beds
- 1, 1 bath
- Condominium, Residential
- Condominium, Residential
- Active
- 624 sq ft

Basics



Category: Condominium, Residential

Status: Active

Bathrooms: 1, 1 bath

Floors: 70 floors

Year built: 2003

Subdivision Name: MILLENNIUM TOWER CONDOMIN

Type: Condominium, Residential

Bedrooms: 0 beds

Half baths: 0 half baths

Area: 624 sq ft

View: Bay, City

County: Miami-Dade

Property details

Subdivision Name: MILLENNIUM TOWER CONDOMIN

Parcel Number: 33131

Property Features

Building Features: ExteriorLighting

Parking Features: Covered, OneSpace, Valet

Cooling Y/N: 1

Heating: Other

View: Bay, City

Waterfront Y/N: 1

Waterfront Features: Bayfront

Cooling: CentralAir

Garage Y/N: 1

Pets Allowed: No

View Y/N: 1

Stories Total: 70

Rooms & Units Description

Unit Number: 3111

Location Details



County Or Parish: Miami-Dade

Directions: Head towards 1435 Brickell Ave, Miami. Take SW 8th St and turn onto Brickell Ave. Continue straight, passing SE 14th Terrace and SE 15th Rd. The destination will be on your right after SE 14th Ln.

Elementary School: Southside

Middle/Junior School: Shenandoah

High School: Miami Senior

Building Details

Architectural Style: HighRise

Construction Materials: Block

Covered Spaces: 1

Foundation Details: PillarPostPier,Raised,Slab

Garage Spaces: 1

Other Structures: Apartment

Floor covering: Carpet, Tile

Amenities & Features

Pool Features: Association,Heated

Parking Features: Covered,OneSpace,Valet

Security Features: ElevatorSecured,KeyCardEntry,LobbySecured,FireSprinklerSystem,SmokeDetectors

Association Amenities: BusinessCenter,Cabana,Clubhouse,FitnessCenter,HobbyRoom,Laundry,Pool,SpaHotTub,Trash,Elevators

Waterfront Features: Bayfront

Cooling: CentralAir

Exterior Features: Other

Furnished: Furnished

Heating: Other

Interior Features: BreakfastArea,ConvertibleBedroom,ClosetCabinetry,EatInKitchen,SittingAreaInPrimary,SeparateShower,WalkInClosets,Bar

Laundry Features: CommonArea

Appliances: Dishwasher,ElectricRange,ElectricWaterHeater,Microwave,Refrigerator

Features: ExteriorLighting

Nearby Schools

Middle Or Junior School: Shenandoah

Elementary School: Southside

High School: Miami Senior

Expenses, Fees & Taxes

Association Fee: \$1,213

Tax Annual Amount: \$10,854

Tax Year: 2024



Fees & Taxes

Association Fee: 1213

Miscellaneous

Association Fee Frequency: Monthly **List Office Name:** Sunland Real Estate, LLC.

Listing Terms: Cash,Conventional

Miscellaneous

Above Grade **Virtual Tour URL:**

Finished Area: <https://www.propertypanorama.com/instaview/mia/A11817373>
Miami, FL

Courtesy of

Office Name: Sunland Real Estate, LLC.

