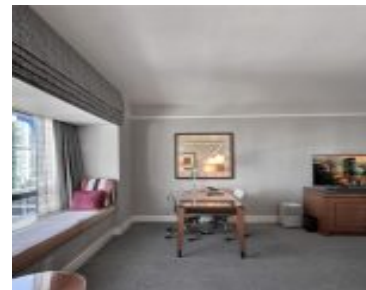


1435 BRICKELL AVE MIAMI FL 33131 1435 BRICKELL AVE 3308

<https://www.cays.com>



MILLENNIUM TOWER CONDOMINIUM HOTEL CONDO UNIT 3308 UNDIV
0.5603% INT IN COMMON ELEMENTS OFF REC 21766-4820 COC 22805-1316
10 2004 1 Experience the perfect blend of sophistication and comfort in this elegant studio at the Four Seasons Brickell. Located on a high floor, Unit 3308 offers breathtaking views of the water & the Miami skyline. [...]

- 0 beds
- 1, 1 bath
- Condominium, Residential
- Condominium, Residential
- Active
- 624 sq ft

Basics



Category: Condominium, Residential

Status: Active

Bathrooms: 1, 1 bath

Floors: 70 floors

Year built: 2003

Subdivision Name: MILLENNIUM TOWER CONDOMIN

Type: Condominium, Residential

Bedrooms: 0 beds

Half baths: 0 half baths

Area: 624 sq ft

View: City,Ocean

County: Miami-Dade

Property details

Subdivision Name: MILLENNIUM TOWER CONDOMIN

Parcel Number: 33131

Property Features

Parking Features: OneSpace,Valet

Cooling Y/N: 1

Heating: Central

Pets Allowed: Conditional,Yes

View Y/N: 1

Cooling: CentralAir

Garage Y/N: 1

Heating Y/N: 1

View: City,Ocean

Stories Total: 70

Rooms & Units Description

Unit Number: 3308

Location Details

County Or Parish: Miami-Dade

Middle/Junior School: Shenandoah

Elementary School: Southside



Building Details

Architectural Style: HighRise

Covered Spaces: 1

Floor covering: Carpet

Construction Materials: Block

Garage Spaces: 1

Amenities & Features

Pool Features: Association,Heated

Security Features: DoorMan,ElevatorSecured,KeyCardEntry

Cooling: CentralAir

Furnished: Furnished

Interior Features: WalkInClosets,Bar

Parking Features: OneSpace,Valet

Association Amenities: BusinessCenter,Elevators,FitnessCenter,Barbecue,PicnicArea,Playground,Pool,Sauna,SpaHotTub,Trash

Exterior Features: SecurityHighImpactDoors

Heating: Central

Appliances: Dryer,Dishwasher,Microwave,Refrigerator,Washer

Nearby Schools

Middle Or Junior School: Shenandoah

Elementary School: Southside

Expenses, Fees & Taxes

Association Fee: \$1,307

Tax Year: 2024

Tax Annual Amount: \$7,692

Fees & Taxes

Association Fee: 1307

Miscellaneous



Association Fee Frequency: Monthly **List Office Name:** Property Partners RE LLC

Listing Terms: Cash,Conventional

Miscellaneous

Above Grade **Virtual Tour URL:**

Finished Area: <https://www.propertypanorama.com/instaview/mia/A11854310>
Miami, FL

Courtesy of

Office Name: Property Partners RE LLC

