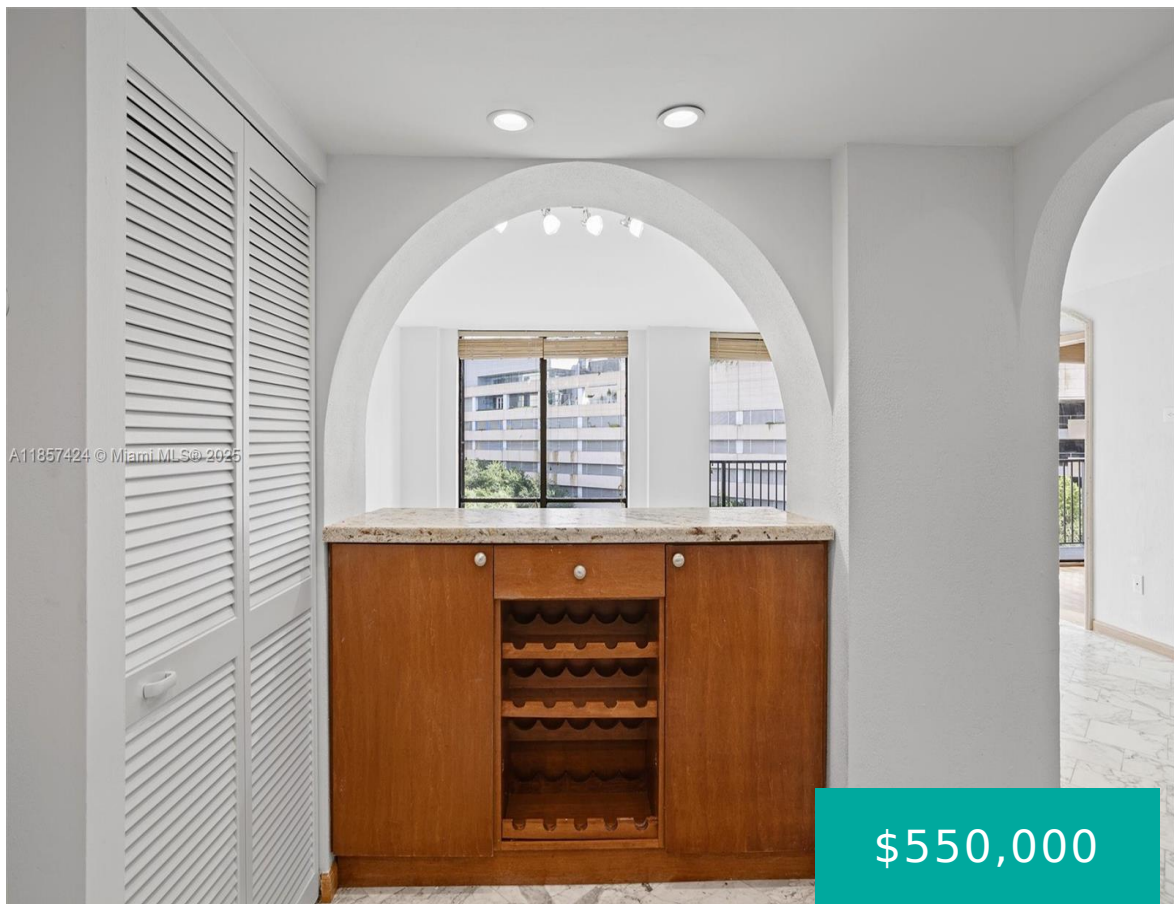


1450 BRICKELL BAY DR MIAMI FL 33131 1450 BRICKELL BAY DR 515

<https://www.cays.com>



A11857424 © Miami MLS® 2025

\$550,000



COSTA BELLA CONDO UNIT 515 UNDIV .4808% INT IN COMMON ELEMENTS OFF REC 9767-801 OR 19829-592 0401 1 COC 22915-3255 12 2004 1 Very ample 2 bedrm 2 bath unit in Costa Bella w/almost 1,300sf with long balcony overlooking tennis courts. Remodeled kitchen w/stainless steel appliances, renovated bathrooms with ample master bedroom & lge walk [...]

- 2 beds
- 2, 2 baths
- Condominium, Residential
- Condominium, Residential
- Active
- 1249 sq ft

Basics



Category: Condominium, Residential
Status: Active
Bathrooms: 2, 2 baths
Floors: 21 floors
Year built: 1977
Subdivision Name: COSTA BELLA CONDO

Type: Condominium, Residential
Bedrooms: 2 beds
Half baths: 0 half baths
Area: 1249 sq ft
View: Garden, Tennis Court, Water
County: Miami-Dade

Property details

Subdivision Name: COSTA BELLA CONDO

Parcel Number: 33131

Property Features

Waterfront Features:
Bayfront

Parking Features:
Assigned, Detached Carport, Detached, Garage, On Street, Two Or More Spaces

Carport Y/N: 1

Cooling: Central Air, Electric

Cooling Y/N: 1

Garage Y/N: 1

Heating:
Central, Electric

Heating Y/N: 1

Pets Allowed:
Conditional, Yes

View: Garden, Tennis Court, Water

View Y/N: 1

Waterfront Y/N: 1

Stories Total: 21

Rooms & Units Description

Unit Number: 515

Location Details



County Or Parish: Miami-Dade

Middle/Junior School: Shenandoah

Elementary School: Southside

High School: Washington; Brooker T

Building Details

Architectural Style: HighRise

Covered Spaces: 2

Floor covering: Hardwood, Marble, Wood

Construction Materials: Block

Garage Spaces: 2

Amenities & Features

Parking Features: Assigned, DetachedCarport, Detached, Garage, OnStreet, TwoOrMoreSpaces

Patio & Porch Features: Balcony, Open

Waterfront Features: Bayfront

Window Features: Blinds

Exterior Features: Balcony, Barbecue, TennisCourts, StormSecurityShutters

Heating: Central, Electric

Appliances:

Dryer, Dishwasher, ElectricRange, ElectricWaterHeater, IceMaker, Microwave, Refrigerator, Washer

Security Features: ComplexFenced, DoorMan, SecurityGuard

Association Amenities:

BusinessCenter, FitnessCenter, Library, Playground, Pool, TennisCourts, Trash, Elevators

Utilities: CableAvailable

Cooling: CentralAir, Electric

Furnished: Unfurnished

Interior Features: LivingDiningRoom, Other, WalkInClosets, Elevator

Nearby Schools

Middle Or Junior School: Shenandoah

High School: Washington; Brooker T

Elementary School: Southside

Expenses, Fees & Taxes

Association Fee: \$1,305

Tax Year: 2024

Tax Annual Amount: \$7,379

Fees & Taxes

Association Fee: 1305



Miscellaneous

Association Fee Frequency: Monthly **List Office Name:** Cervera Real Estate Inc.

Listing Terms: Cash,Conventional

Miscellaneous

Above Grade

Finished Area:

Miami, FL

Virtual Tour URL: <https://services.qriqet.com/1450-Brickell-Bay-Dr-515>

Courtesy of

Office Name: Cervera Real Estate Inc.

