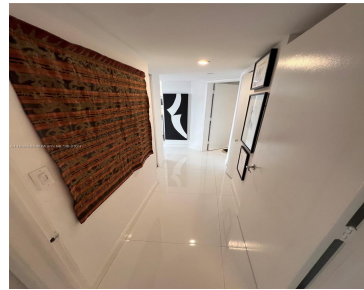


151 SE 15TH RD 2401 MIAMI FL 33129

<https://www.cays.com>



This is a rare gem: a corner unit situated on a high floor of Brickell East, an exclusive high-rise boutique building in the heart of Brickell. With just 65 residences and 2 units per floor, this home offers unparalleled privacy and tranquility. Fully upgraded and meticulously maintained, this stunning residence is move-in ready, with Wolf [...]

- 2 beds
- 2 baths
- Condominium
- Residential
- Active
- 1400 sq ft

Basics

Bathrooms Full: 2

Category: Residential

Status: Active

Bathrooms: 2 baths

Year built: 1983

Lot Size Units: Square Feet

Type: Condominium

Bedrooms: 2 beds

Area: 1400 sq ft



Property details

Total Building Area: 1400

Parcel Number: 01-41-39-044-0510

Subdivision Name: BRICKELL EAST CONDO

Possession: Close Of Escrow

Property Features

Exterior Features:

Balcony,Barbecue,Courtyard,Porch,Patio

Parking Features: One Space

Appliances: Dryer,Dishwasher,Electric Range,Microwave

Construction Materials: Block

Cooling Y/N: 1

Flooring: Ceramic Tile,Tile

Garage Y/N: 1

Heating Y/N: 1

View: Bay,City,Pool,Water

Entry Level: 28

Patio and Porch Features:

Balcony,Open,Patio,Porch

Stories Total: 28

Interior Features: Bidet,Dual Sinks,Separate Shower

Security Features: Complex Fenced,Door Man,Elevator Secured,Fire Alarm,Secured Garage/Parking,Key Card Entry,Lobby Secured,Fire Sprinkler System

Association Amenities: Bike Storage,Clubhouse,Fitness Center

Cooling: Central Air

Covered Spaces: 1

Garage Spaces: 1

Heating: Central

Pets Allowed: No Pet Restrictions,Yes

View Y/N: 1

Entry Location: 28

Property Attached Y/N: 1

Rooms & Units Description

Unit Number: 2401

Number of Units in the Community: 65

Location Details



County Or Parish: Miami-Dade County

Middle/Junior School: Shenandoah

Elementary School: Southside

High School: Washington; Brooker T

Fees & Taxes

Tax Annual Amount: 8371

Tax Year: 2023

Tax Legal Description: BRICKELL EAST CONDO UNIT 2401
UNDIV .01488% INT IN COMMON ELEMENTS OFF REC
11996-494 & 12794-339 OR 19710-4624 0501 1

Association Fee: 1956

Association Fee Frequency: Monthly

Association Fee Includes:
Amenities

Miscellaneous

Public Survey Township: 1

**Public
Survey
Section:** 39

Syndication Remarks: This is a rare gem: a corner unit situated on a high floor of Brickell East, an exclusive high-rise boutique building in the heart of Brickell.

**Year Built
Details:**
Resale

Virtual Tour URL: https://youtu.be/BGSB9XhD8ts?si=_ozKsQr1qCuspCOE

Courtesy of

Office Name: Miami Real Estate Group, LLC

