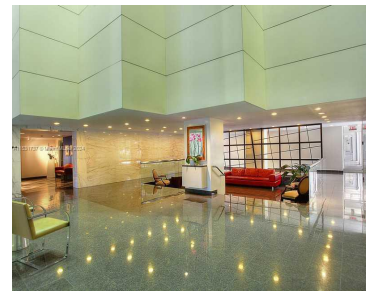
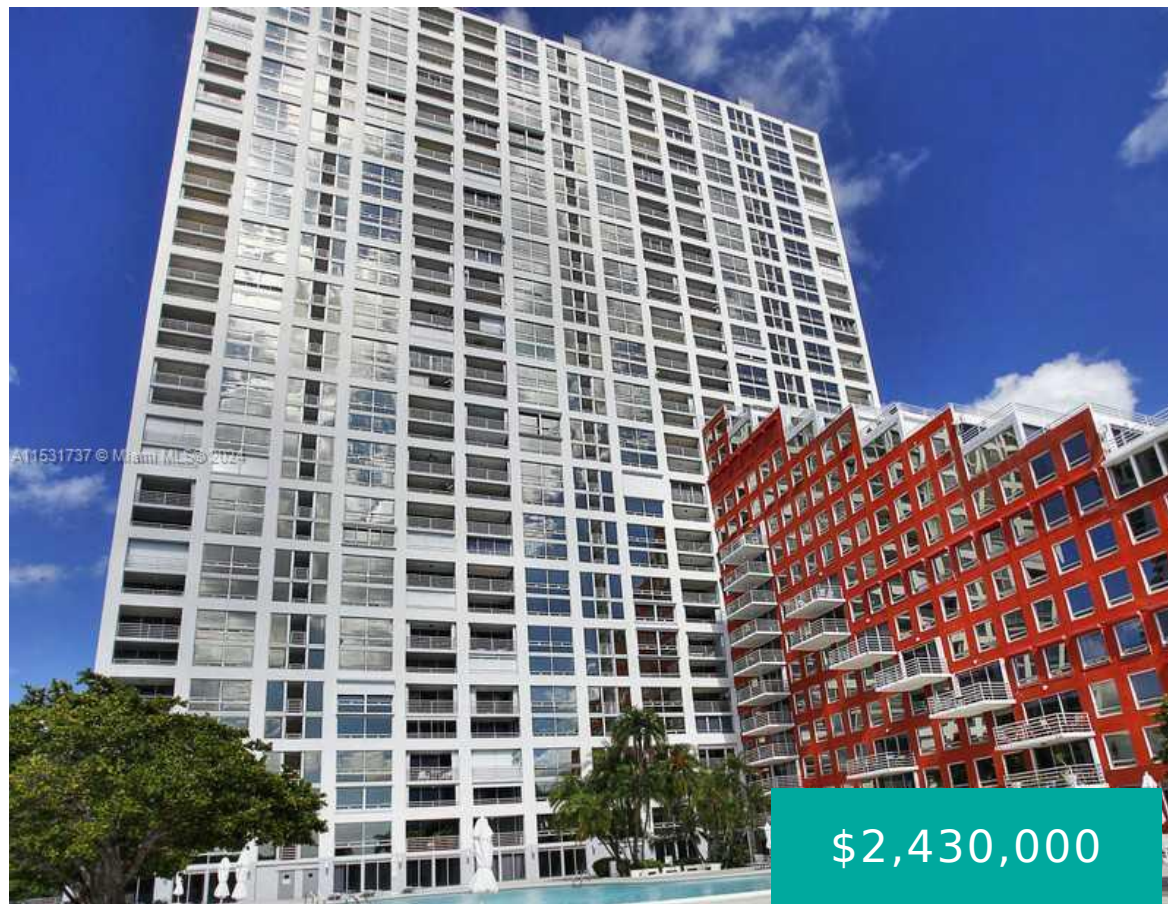


1541 BRICKELL AVE C1507 MIAMI FL 33129

<https://www.cays.com>



\$2,430,000

Spectacular and unique model in the entire building with ocean view from the terrace !!!! Living in this ionic Brickell building, is a luxury experience, elegant flow-thru floor plan, with stunning views of Biscayne Bay, the ocean and the Rickenbacker Causeway, the apt. has 3 upper level parking spaces and 2 of these are next [...]

- 4 beds
- 3 baths
- Condominium
- Residential
- Active
- 2412 sq ft

Basics

Bathrooms Full: 3

Category: Residential

Status: Active

Bathrooms: 3 baths

Year built: 1981

Lot Size Units: Square Feet

Type: Condominium

Bedrooms: 4 beds

Area: 2412 sq ft



Property details

Total Building Area: 2412

Direction Faces: Southeast

Subdivision Name: THE PALACE CONDO

Parcel Number: 01-41-39-038-2210

Possession: Closing & Funding

Property Features

Exterior Features:

Balcony, Storm/Security Shutters

Interior Features: Bidet, Bedroom on Main Level, Dual

Sinks, Living/Dining Room, Main Living Area Entry Level, Pantry

Waterfront Features: Bay Front

Window Features: Blinds, Sliding

Pool Features: Association

Parking Features: Covered, Guest

Security Features: Key Card Entry, Lobby Secured, Other

Appliances: Dryer, Dishwasher, Electric Range, Disposal, Microwave, Refrigerator, Washer

Architectural Style: High Rise

Association Amenities: Fitness Center, Other, Pool

Construction Materials: Block

Cooling: Central Air, Electric

Cooling Y/N: 1

Covered Spaces: 3

Flooring: Marble

Furnished: Unfurnished

Garage Spaces: 3

Garage Y/N: 1

Heating: Central, Electric

Heating Y/N: 1

Pets Allowed: Conditional, Yes

View: Bay, Ocean

View Y/N: 1

Entry Level: 15

Entry Location: 15

Patio and Porch Features: Balcony, Open

Property Attached Y/N: 1

Waterfront Y/N: 1

Rooms & Units Description

Unit Number: C1507



Location Details

County Or Parish: Miami-Dade County

Fees & Taxes

Tax Annual Amount: 20790

Tax Year: 2023

Tax Legal Description: THE PALACE CONDO UNIT C1507 UNDIV .56% INT IN COMMON ELEMENTS OFF REC 11275-1461 OR 11312-462 1281 1

Association Fee: 3845

Association Fee Frequency: Monthly

Association Fee Includes:
Amenities,Common Areas,Maintenance
Structure

Miscellaneous

Public Survey Township: 1

**Public
Survey
Section:** 39

Syndication Remarks: UNIQUE MODEL APT IN THE ENTIRE BIULDING WITH STUNNING OCEAN VIEW FROM THE ELEGANT TERRACE !!!!

**Year Built
Details:**
Resale

Virtual Tour URL:

<https://www.propertypanorama.com/instaview/mia/A11531737>

Courtesy of

Office Name: Cervera Real Estate Inc.

