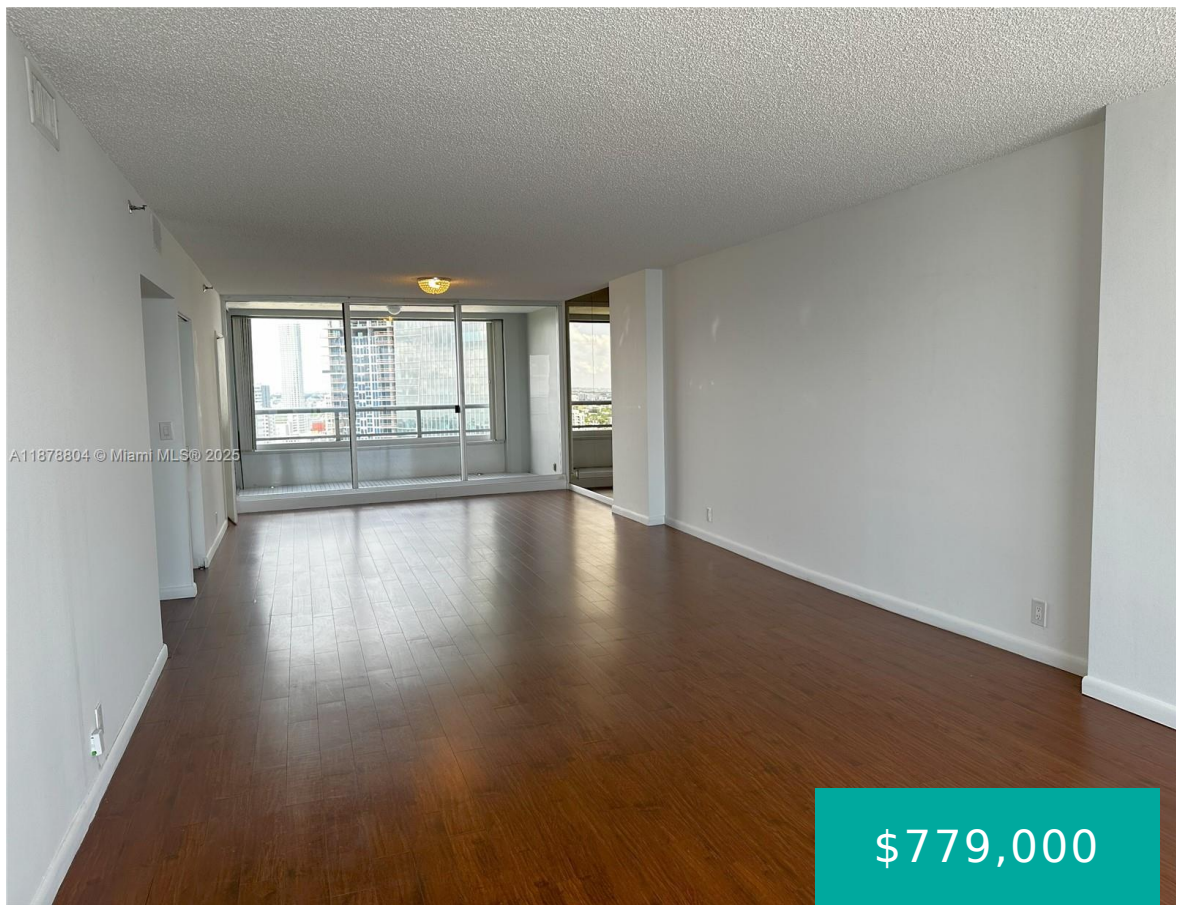


1541 BRICKELL AVE MIAMI FL 33129 1541 BRICKELL AVE A3002

<https://www.cays.com>



\$779,000



THE PALACE CONDO UNIT A3002 UNDIV .38% INT IN COMMON ELEMENTS OFF REC 11275-1461 OR 14704-2367 0890 4 COC 26460-4674 06 2008 1 Do not miss this opportunity to purchase this property !! PRICED TO SELL !! Unobstructed views of bay and city skyline from this spacious flow through apartment at The Palace Condo. Very [...]

- 2 beds
- 2, 2 baths
- Condominium, Residential
- Condominium, Residential
- Active
- 1640 sq ft

Basics



Category: Condominium, Residential
Status: Active
Bathrooms: 2, 2 baths
Floors: 40 floors
Year built: 1981
Subdivision Name: THE PALACE CONDO

Type: Condominium, Residential
Bedrooms: 2 beds
Half baths: 0 half baths
Area: 1640 sq ft
View: Bay, City, Water
County: Miami-Dade

Property details

Subdivision Name: THE PALACE CONDO

Parcel Number: 33129

Property Features

Waterfront Features:
Bayfront

Parking Features:
Assigned, Attached, Covered, Garage, TwoOrMoreSpaces

Cooling: CentralAir

Cooling Y/N: 1

Garage Y/N: 1

Heating: Central

Heating Y/N: 1

Pets Allowed: Conditional, Yes

View: Bay, City, Water

View Y/N: 1

Waterfront Y/N: 1

Stories Total: 40

Rooms & Units Description

Unit Number: A3002

Location Details

County Or Parish: Miami-Dade

Elementary School: Coral Way

Middle/Junior School: Ponce De Leon

High School: Miami Senior



Building Details

Architectural Style: HighRise

Covered Spaces: 2

Floor covering: Hardwood, Wood

Construction Materials: Block

Garage Spaces: 2

Amenities & Features

Pool Features: Association

Security Features: SecuredGarageParking,LobbySecured,SecurityGuard,FireSprinklerSystem,SmokeDetectors

Association Amenities:
BikeStorage,Clubhouse,FitnessCenter,Barbecue,PicnicArea,Playground,Pool,SpaHotTub,TennisCourts,Trash,Elevators

Window Features: Blinds

Exterior Features: Balcony,Barbecue,TennisCourts

Interior Features:
BedroomOnMainLevel,DualSinks,EntranceFoyer,GardenTubRomanTub,LivingDiningRoom,TubShower,WalkInClosets

Parking Features: Assigned,Attached,Covered,Garage,TwoOrMoreSpaces

Patio & Porch Features: Balcony,Open

Waterfront Features: Bayfront

Cooling: CentralAir

Heating: Central

Appliances:
Dryer,Dishwasher,ElectricRange,ElectricWaterHeater,Disposal,IceMaker,Microwave,Refrigerator,SelfCleaningOven,Washer

Nearby Schools

Middle Or Junior School: Ponce De Leon

High School: Miami Senior

Elementary School: Coral Way

Expenses, Fees & Taxes

Association Fee: \$2,515

Tax Year: 2024

Tax Annual Amount: \$14,556

Fees & Taxes

Association Fee: 2515

Miscellaneous

Association Fee Frequency: Monthly

Listing Terms: Cash

List Office Name: Edge 1 Realty



Miscellaneous

Above Grade **Virtual Tour URL:**

Finished Area: <https://www.propertypanorama.com/instaview/mia/A11878804>
Miami, FL

Courtesy of

Office Name: Edge 1 Realty

