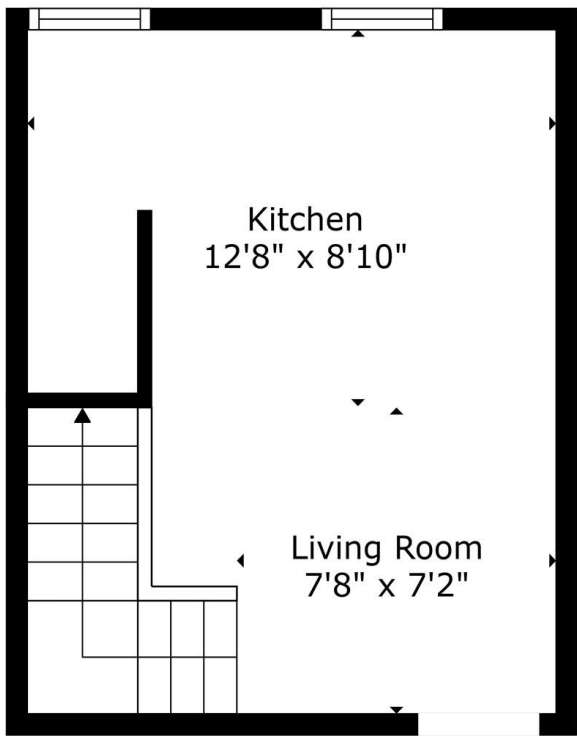


# 1610 EUCLID AVE MIAMI BEACH FL 33139 1610 EUCLID AVE A109

<https://www.cays.com>



A11878414 © Miami MLS® 2025



**TOTAL: 436 sq. ft**  
 FLOOR 1: 204 sq. ft, FLOOR 2: 232 sq. ft  
 EXCLUDED AREAS: WALLS: 61 sq. ft

Floor Plan Created By Cubicasa App. Measurements Deemed Highly Reliable But Not Guaranteed.

**\$335,000**



1610 EUCLID AVE CONDO UNIT 109 BLDG A UNDIV 3.74% INT IN COMMON ELEMENTS OFF REC 32172-1992 The unit features a functional layout with natural light, a well-appointed kitchen, and comfortable living space. Ideal for full-time residents, seasonal escapes, or investors seeking strong rental potential in a high-demand area. SELLER OFFERING BUYER \$10K CREDIT AT [...]

- 1 bed
- 1, 1 bath
- Condominium, Residential
- Condominium, Residential
- Active
- 511 sq ft

## Basics



**Category:** Condominium, Residential

**Status:** Active

**Bathrooms:** 1, 1 bath

**Floors:** 2 floors

**Year built:** 2022

**View:** Garden

**County:** Miami-Dade

**Type:** Condominium, Residential

**Bedrooms:** 1 bed

**Half baths:** 0 half baths

**Area:** 511 sq ft

**Property Condition:** UpdatedRemodeled

**Subdivision Name:** LINCOLN SUB

---

## Property details

**Subdivision Name:** LINCOLN SUB

**Parcel Number:** 33139

---

## Property Features

**Parking Features:** OnStreet

**Cooling Y/N:** 1

**Heating Y/N:** 1

**View:** Garden

**Cooling:** CeilingFans,Electric,Zoned

**Heating:** Electric

**Pets Allowed:** SizeLimit,Yes

**Stories Total:** 2

---

## Rooms & Units Description

**Unit Number:** A109

---

## Location Details

**County Or Parish:** Miami-Dade

**Directions:** Please use GPS, on Euclid Ave in between Lincoln Rd and 16th St.

**Elementary School:** South Pointe

**High School:** Miami Beach



---

## Building Details

**Construction Materials:** Block

**Floor covering:** Vinyl

---

## Amenities & Features

**Parking Features:** OnStreet

**Patio & Porch Features:** Deck

**Window Features:** ImpactGlass

**Exterior Features:**  
Courtyard,Deck,SecurityHighImpactDoors

**Interior Features:**  
FirstFloorEntry,UpperLevelPrimary

**Security Features:** ComplexFenced

**Association Amenities:** Other

**Cooling:** CeilingFans,Electric,Zoned

**Heating:** Electric

**Appliances:**  
Dishwasher,ElectricWaterHeater,Microwave,Washer

---

## Nearby Schools

**Elementary School:** South Pointe

**High School:** Miami Beach

---

## Expenses, Fees & Taxes

**Association Fee:** \$459

**Tax Year:** 2024

**Tax Annual Amount:** \$5,263

---

## Fees & Taxes

**Association Fee:** 459

---

## Miscellaneous



**Association Fee Frequency:** Monthly **List Office Name:** Keller Williams Capital Realty

**Listing Terms:** Cash,Conventional

---

## Miscellaneous

**Above Grade**

**Virtual Tour URL:**

**Finished Area:** <https://www.propertypanorama.com/instaview/mia/A11878414>

Miami Beach, FL

---

## Courtesy of

**Office Name:** Keller Williams Capital Realty

