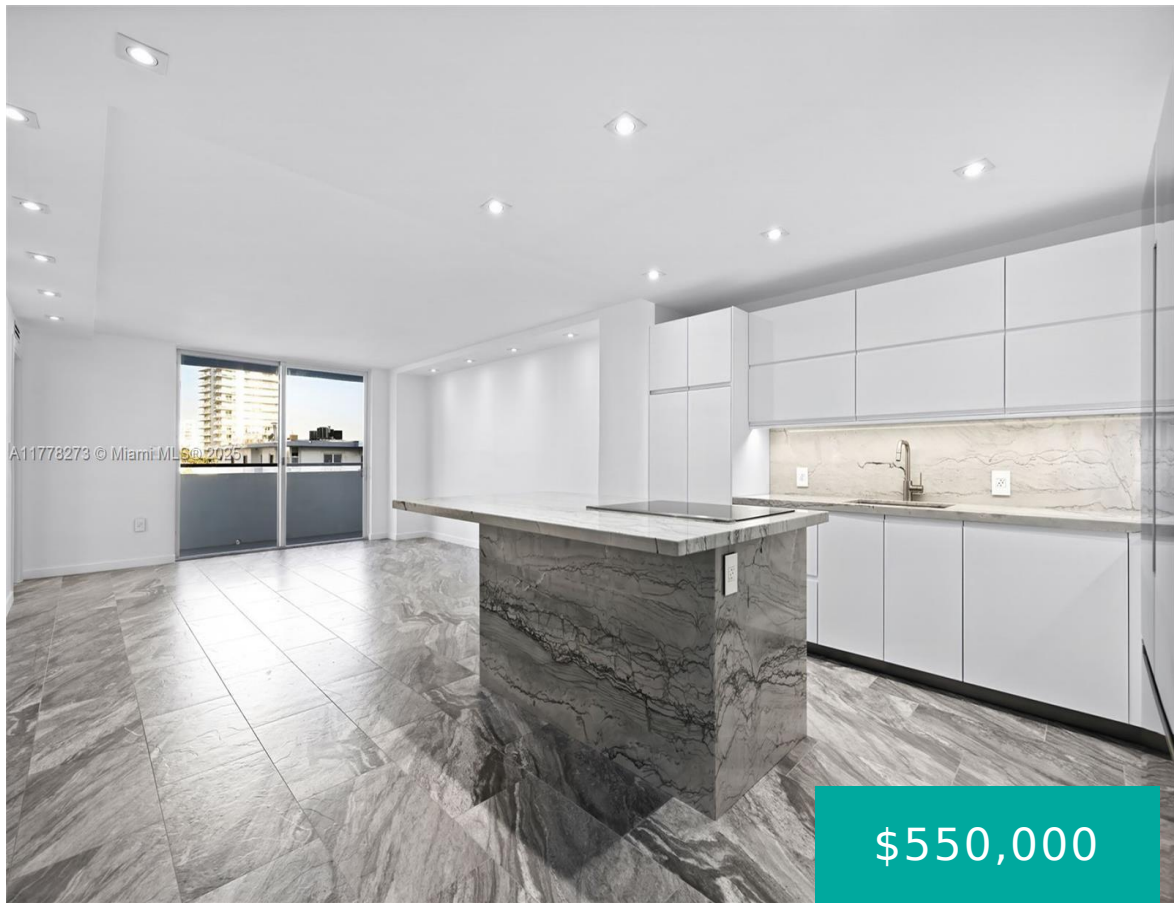


1658 BAY RD MIAMI BEACH FL 33139 1658 BAY RD 504

<https://www.cays.com>



LINCOLN PALACE CONDO UNIT 504 FIFTH FLOOR UNDIV 1/42 SHARE IN COMMON ELEMENTS CLERKS FILE 70R-105955 OR 15979-5150 0793 1 Experience the best of South Beach living in a highly desirable area in this meticulously renovated corner unit. No detail was overlooked. Complete gut renovation. Enjoy peace of mind with a brand-new AC system w/ [...]

- 1 bed
- 1, 2 bath
- Condominium, Residential
- Condominium, Residential
- Active
- 858 sq ft

Basics



Bathrooms Half: 1

Type: Condominium, Residential

Bedrooms: 1 bed

Half baths: 1 half bath

Area: 858 sq ft

View: Bay,Water

County: Miami-Dade

Category: Condominium, Residential

Status: Active

Bathrooms: 1, 2 bath

Floors: 7 floors

Year built: 1970

Subdivision Name: LINCOLN PALACE CONDO

Property details

Subdivision Name: LINCOLN PALACE CONDO

Parcel Number: 33139

Property Features

Parking Features: Assigned,Deeded,OneSpace

Cooling Y/N: 1

Heating: Central

Pets Allowed: Conditional,Yes

View Y/N: 1

Cooling: CentralAir

Garage Y/N: 1

Heating Y/N: 1

View: Bay,Water

Stories Total: 7

Rooms & Units Description

Unit Number: 504

Location Details

County Or Parish: Miami-Dade

Directions: West end of Lincoln Rd, turn right on Bay Rd. Building. will be on the left side.

Elementary School: North Beach

Middle/Junior School: Nautilus

High School: Miami Beach



Building Details

Construction Materials: Block

Garage Spaces: 1

Covered Spaces: 1

Floor covering: CeramicTile

Amenities & Features

Parking Features:
Assigned,Deeded,OneSpace

Security Features: KeyCardEntry

Patio & Porch Features:
Balcony,Open

Association Amenities: BikeStorage,Laundry,Elevators

Cooling: CentralAir

Exterior Features: Balcony

Heating: Central

Interior Features:
BedroomOnMainLevel,Elevator,FirstFloorEntry

Laundry Features:
CommonArea

Appliances:
Dryer,Dishwasher,ElectricRange,Microwave,Refrigerator,Washer

Nearby Schools

Middle Or Junior School: Nautilus

Elementary School: North Beach

High School: Miami Beach

Expenses, Fees & Taxes

Association Fee: \$550

Tax Annual Amount: \$6,211

Tax Year: 2024

Fees & Taxes

Association Fee: 550



Miscellaneous

Association Fee Frequency: Monthly **List Office Name:** Compass Florida, LLC.

Listing Terms: Cash,Conventional

Miscellaneous

Above Grade **Virtual Tour URL:**
Finished Area: <https://www.propertypanorama.com/instaview/mia/A11778273>
Miami Beach, FL

Courtesy of

Office Name: Compass Florida, LLC.

