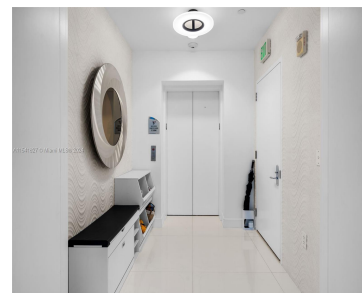


17121 COLLINS AVE 1208 SUNNY ISLES BEACH FL 33160

<https://www.cays.com>



Nestled along the pristine shores of Sunny Isles Beach, this stunning 3BD/3.5BA apartment at Jade Ocean epitomizes coastal luxury living. From the moment you step out your private elevator into the grand foyer, you're greeted by elegance and sophistication. The spacious and bright living area features floor-to-ceiling windows that frame breathtaking views of the Miami [...]

- 3 beds
- 4 baths
- Condominium
- Residential
- Active
- 1956 sq ft

Basics

Bathrooms Half: 1

Lot Size Units: Square Feet

Type: Condominium

Bedrooms: 3 beds

Area: 1956 sq ft

Bathrooms Full: 3

Category: Residential

Status: Active

Bathrooms: 4 baths

Year built: 2009



Property details

Total Building Area: 1956

Parcel Number: 31-22-11-081-2240

Subdivision Name: JADE OCEAN CONDO

Possession: Closing & Funding

Property Features

Exterior Features: Other

Waterfront Features: Ocean Front

Parking Features: Covered,One Space,Valet

Appliances: Built-In
Oven,Dryer,Dishwasher,Microwave,Washer

Association Amenities: Business
Center,Clubhouse,Fitness Center,Pool,Sauna,Elevator(s)

Cooling: Central Air

Covered Spaces: 1

Furnished: Negotiable

Garage Y/N: 1

Heating Y/N: 1

View: City,Water

Entry Level: 12

Property Attached Y/N: 1

Stories Total: 52

Interior Features: Bedroom on Main
Level,Dining Area,Separate/Formal
Dining Room,Dual Sinks,Eat-in
Kitchen,First Floor Entry,Jetted
Tub,Kitchen Island,Living/Dining
Room,Separate Shower,Elevator

Window Features: Blinds,Impact
Glass,Sliding

Security Features: Lobby
Secured,Security Guard,Smoke
Detector(s)

Architectural Style: High Rise

Construction Materials: Block

Cooling Y/N: 1

Flooring: Tile

Garage Spaces: 1

Heating: Central

Pets Allowed: Conditional,Yes

View Y/N: 1

Entry Location: 12

Waterfront Y/N: 1

Rooms & Units Description



Unit Number: 1208

Location Details

County Or Parish: Miami-Dade County

Fees & Taxes

Tax Annual Amount: 29841

Tax Year: 2023

Tax Legal Description: JADE OCEAN
CONDO UNIT 1208 UNDIV 0.41298496%
INT IN COMMON ELEMENTS OFF REC
26817-1453

Association Fee: 2906

Association Fee Frequency: Monthly

Association Fee Includes: Association
Management,Amenities,Common Areas,Cable TV,Hot
Water,Security

Miscellaneous

Public Survey Township: 31

**Public
Survey
Section:** 11

Syndication Remarks: This stunning 3BD/3.5BA apartment at Jade Ocean epitomizes coastal luxury living.

**Year Built
Details:**
Resale

Virtual Tour URL:

<https://www.propertypanorama.com/instaview/mia/A11541827>

Courtesy of

Office Name: The Agency Florida LLC

