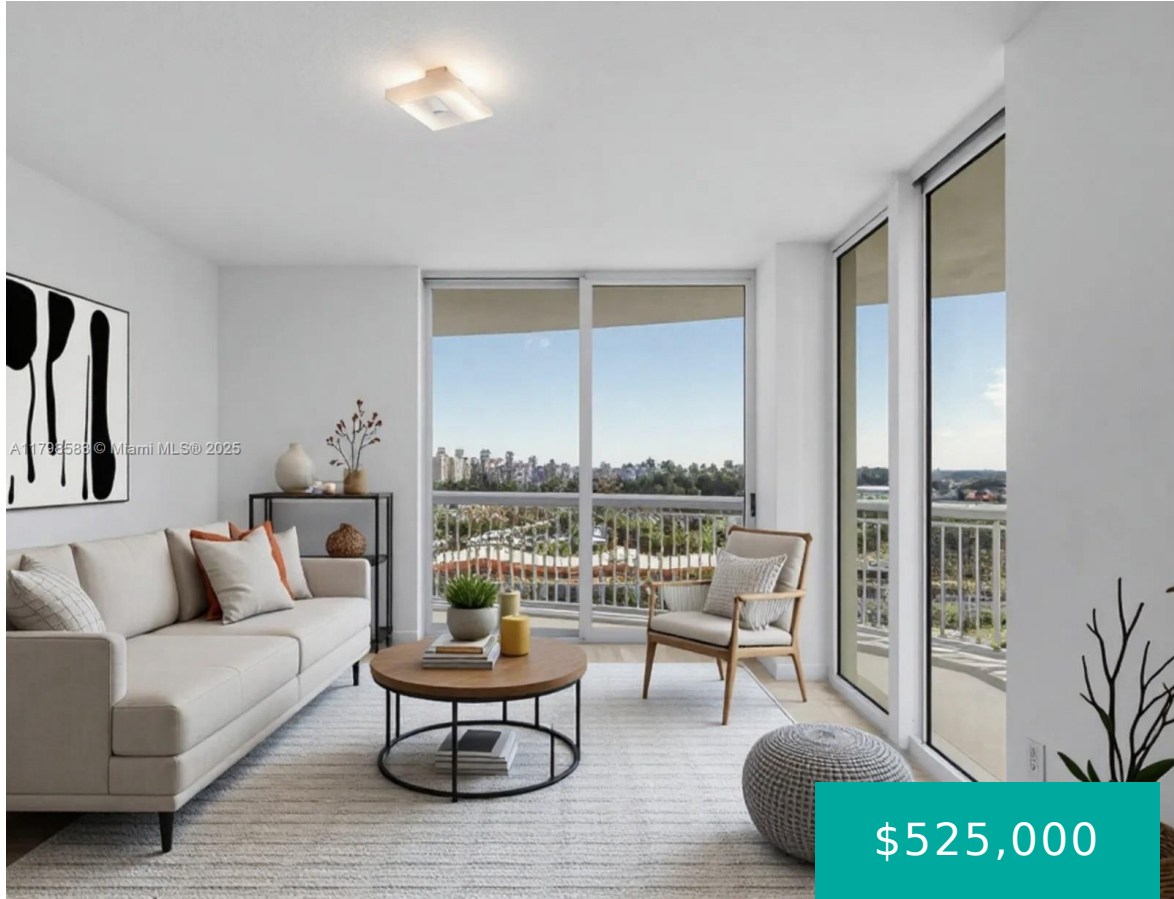


# 1745 HALLANDALE BEACH BLVD HALLANDALE BEACH FL 33009 1745 E HALLANDALE BEACH BLVD 2007W

<https://www.cays.com>



DUO CONDOMINIUM WEST UNIT 1907 W PER CDO CIN# 107072517 Welcome to the DOU Condominium at 1745 E Hallandale Beach Blvd, Apt. 2007W, Hallandale Beach, FL. This exceptional 2-bedroom, 2-bathroom corner unit spans 1,354 sq. ft., offering a spacious open layout complemented by central air and heating. The wraparound balcony presents expansive views, ideal for [...]

- 2 beds
- 2, 2 baths
- Condominium, Residential
- Condominium, Residential
- Active
- 1354 sq ft

## Basics



**Category:** Condominium, Residential  
**Status:** Active  
**Bathrooms:** 2, 2 baths  
**Floors:** 25 floors  
**Year built:** 2007  
**Subdivision Name:** DUO CONDOMINIUM WEST

**Type:** Condominium, Residential  
**Bedrooms:** 2 beds  
**Half baths:** 0 half baths  
**Area:** 1354 sq ft  
**View:** City, Golf Course, Intercoastal, Ocean, Water  
**County:** Broward

---

## Property details

**Subdivision Name:** DUO CONDOMINIUM WEST

**Parcel Number:** 33009

---

## Property Features

**Waterfront Features:** Intracoastal Access

**Cooling:** Central Air

**Garage Y/N:** 1

**Heating Y/N:** 1

**View:** City, Golf Course, Intercoastal, Ocean, Water

**Waterfront Y/N:** 1

**Parking Features:**

Assigned, Covered, One Space

**Cooling Y/N:** 1

**Heating:** Central

**Pets Allowed:** Conditional, Yes

**View Y/N:** 1

**Stories Total:** 25

---

## Rooms & Units Description

**Unit Number:** 2007W

---

## Location Details

**County Or Parish:**  
Broward

**Directions:** Follow I-95 S to FL-858 E/Hallandale Beach Blvd in Pembroke Park. Take exit 18 from I-95 S



---

## Building Details

**Construction Materials:** Block

**Garage Spaces:** 1

**Covered Spaces:** 1

**Floor covering:** Carpet, CeramicTile

---

### Amenities & Features

**Pool Features:** Association,Heated

**Security Features:** ComplexFenced,DoorMan,SecurityGuard,SmokeDetectors

**Association Amenities:**

BikeStorage,BusinessCenter,Clubhouse,FitnessCenter,Other,Pool,Sauna,SpaHotTub,TennisCourts,Trash,Elevators

**Utilities:** CableAvailable

**Cooling:** CentralAir

**Heating:** Central

**Appliances:**

Dryer,Dishwasher,ElectricRange,ElectricWaterHeater,Disposal,Microwave,Refrigerator,SelfCleaningOven,TrashCompactor,Washer

**Parking Features:** Assigned,Covered,OneSpace

**Patio & Porch Features:** Balcony,Open,WrapAround

**Waterfront Features:** IntraCoastalAccess

**Window Features:** ImpactGlass

**Exterior Features:** Balcony,Porch,SecurityHighImpactDoors

**Interior Features:**

BedroomOnMainLevel,DiningArea,SeparateFormalDiningRoom,EatInKitchen,FirstFloorEntry,JettedTub,SeparateShower,Elevator

---

## Expenses, Fees & Taxes

**Association Fee:** \$1,461

**Tax Year:** 2024

**Tax Annual Amount:** \$9,160

---

## Fees & Taxes

**Association Fee:** 1461

---

## Miscellaneous

**Association Fee Frequency:** Monthly

**Listing Terms:** Cash,Conventional,Exchange1031,FHA

**List Office Name:** The Corcoran Group

---

## Miscellaneous

**Above Grade**

**Finished Area:**

Hallandale Beach,  
FL

**Virtual Tour URL:**

<https://www.propertypanorama.com/instaview/mia/A11798583>



---

# Courtesy of

**Office Name:** The Corcoran Group

