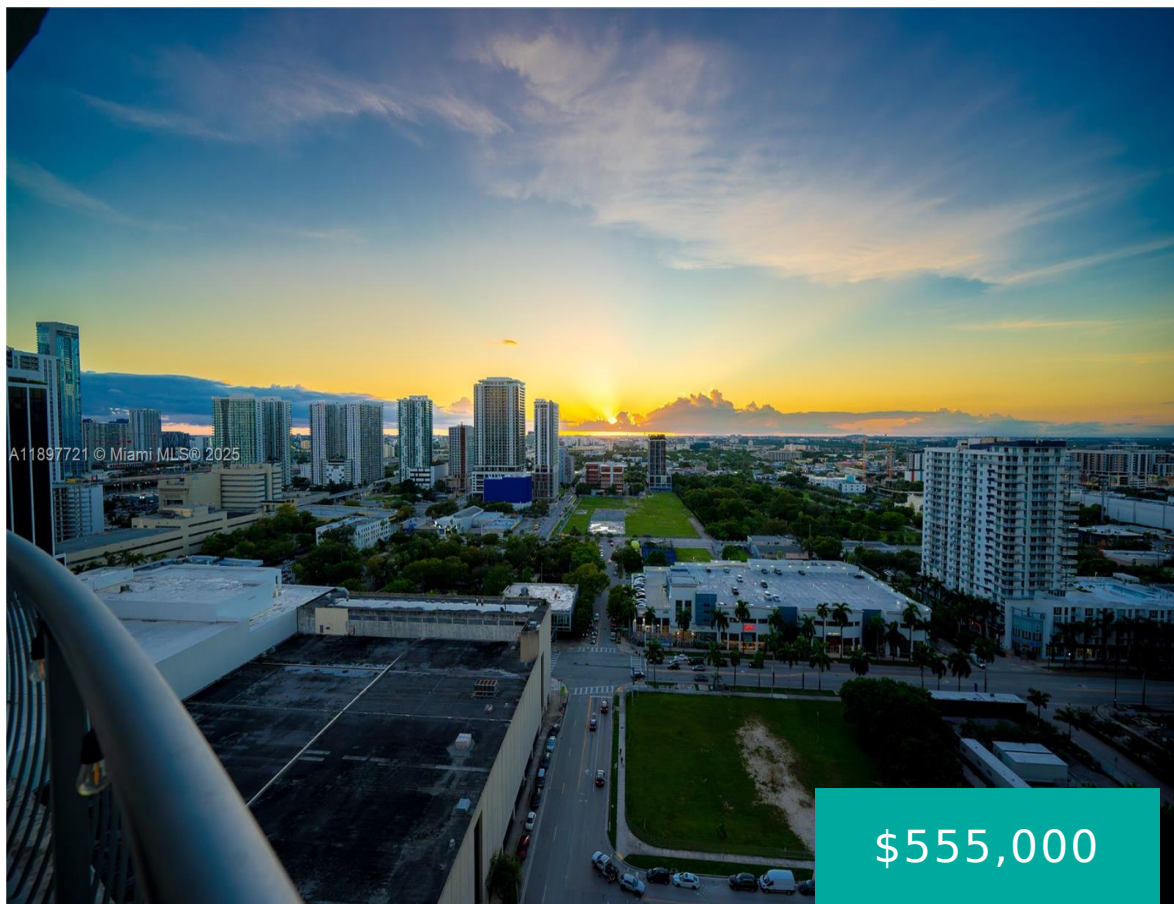
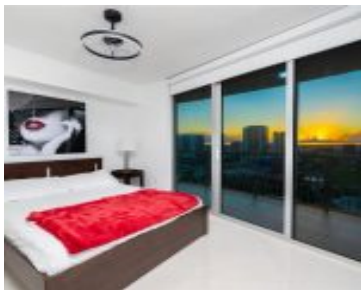


1750 BAYSHORE DR MIAMI FL 33132 1750 N BAYSHORE DR 2615

<https://www.cays.com>



\$555,000



OPERA TOWER CONDO UNIT 2615 UNDIV 0.20% INT IN COMMON ELEMENTS
OFF REC 26127-0872 COC 26263-2908 02 2008 1 **ATTENTION INVESTORS |
AirBnB APPROVED & ALLOWED W/ 30 DAY MIN**Experience the best of Miami
in this luxurious 2-bed, 2-bath apartment at Opera Tower. The king-sized
master suite has an ensuite bath, while the cozy queen [...]

- 2 beds
- 2, 2 baths
- Condominium, Residential
- Condominium, Residential
- Active
- 1048 sq ft

Basics



Category: Condominium, Residential
Status: Active
Bathrooms: 2, 2 baths
Floors: 56 floors
Year built: 2007
Subdivision Name: OPERA TOWER CONDO

Type: Condominium, Residential
Bedrooms: 2 beds
Half baths: 0 half baths
Area: 1048 sq ft
View: City,Other,Pool
County: Miami-Dade

Property details

Subdivision Name: OPERA TOWER CONDO

Parcel Number: 33132

Property Features

Waterfront Features: Bayfront
Cooling: CentralAir,CeilingFans
Garage Y/N: 1
Heating Y/N: 1
View: City,Other,Pool
Stories Total: 56

Parking Features: Attached,Covered,Garage,OneSpace,Valet
Cooling Y/N: 1
Heating: Central
Pets Allowed: Conditional,Yes
Waterfront Y/N: 1

Rooms & Units Description

Unit Number: 2615

Location Details

County Or Parish: Miami-Dade
Middle/Junior School: de Diego; Jose

Elementary School: Wheatley; Phyllis
High School: Washington; Brooker T



Building Details

Architectural Style: HighRise

Covered Spaces: 1

Floor covering: CeramicTile, Tile

Construction Materials: Block

Garage Spaces: 1

Amenities & Features

Pool Features: Association

Security Features:

DoorMan,SecuredGarageParking,LobbySecured,SecurityGuard,SmokeDetectors

Association Amenities:

Clubhouse,FitnessCenter,HobbyRoom,Barbecue,Other,PicnicArea,Pool,Sauna,SpaHotTub,Elevators

Window Features: ImpactGlass

Exterior Features: Balcony

Heating: Central

Appliances: Dryer,Dishwasher,ElectricRange,ElectricWaterHeater,Disposal,Refrigerator,Washer

Parking Features: Attached,Covered,Garage,OneSpace,Valet

Patio & Porch Features: Balcony,Open

Waterfront Features: Bayfront

Cooling: CentralAir,CeilingFans

Furnished: Furnished

Interior Features:

EatInKitchen,LivingDiningRoom,SplitBedrooms,TubShower,WalkInClosets,Elevator

Nearby Schools

Middle Or Junior School: de Diego; Jose **Elementary School:** Wheatley; Phyllis

High School: Washington; Brooker T

Expenses, Fees & Taxes

Association Fee: \$2,062

Tax Year: 2024

Tax Annual Amount: \$7,172

Fees & Taxes

Association Fee: 2062

Miscellaneous



Association Fee Frequency: Monthly **List Office Name:** EXP Realty LLC

Listing Terms: Cash,Conventional

Miscellaneous

Above Grade **Virtual Tour URL:**

Finished Area: <https://www.propertypanorama.com/instaview/mia/A11897721>
Miami, FL

Courtesy of

Office Name: EXP Realty LLC

