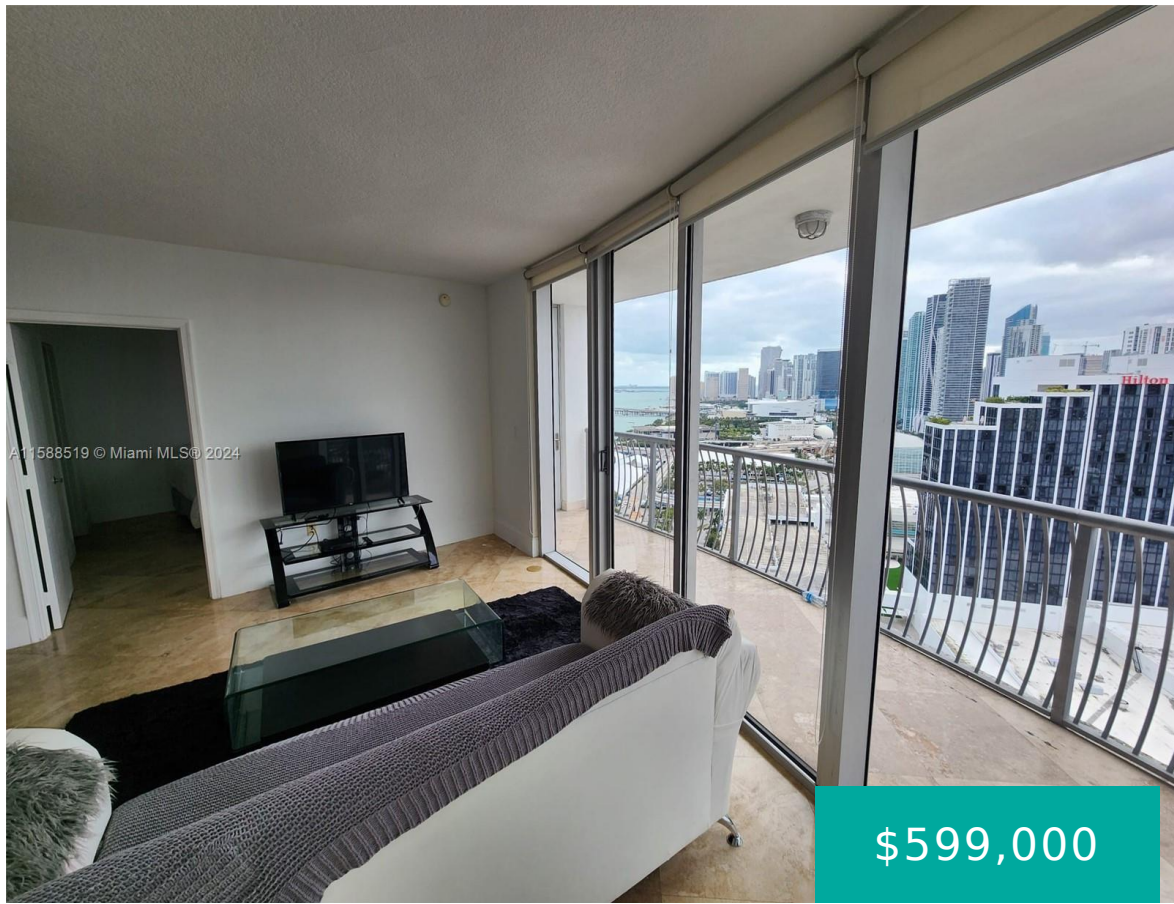


1750 BAYSHORE DR MIAMI FL 33132 1750 N BAYSHORE DR 3114

<https://www.cays.com>



OPERA TOWER CONDO UNIT 3114 UNDIV 0.20% INT IN COMMON ELEMENTS OFF REC 26127-0872 COC 26141-4264 12 2007 1 Spectacular Views Of Downtown Miami. 2 Beds/2 Bath Condo With Large Balcony. Floor To Ceiling Windows, Modern Open Kitchen With Stainless Steel Appliances And Granite Countertops, W/d Inside The Unit. Amenities: Pool, Social Events Room, New [...]

- 2 beds
- 2, 2 baths
- Condominium, Residential
- Condominium, Residential
- Active
- 1048 sq ft

Basics



Category: Condominium, Residential
Status: Active
Bathrooms: 2, 2 baths
Floors: 55 floors
Year built: 2007
Subdivision Name: OPERA TOWER CONDO

Type: Condominium, Residential
Bedrooms: 2 beds
Half baths: 0 half baths
Area: 1048 sq ft
View: Bay, City
County: Miami-Dade

Property details

Subdivision Name: OPERA TOWER CONDO

Parcel Number: 33132

Property Features

Waterfront Features: Bayfront

Parking Features: Assigned, Covered, OneSpace

Cooling: CentralAir

Cooling Y/N: 1

Garage Y/N: 1

Heating: Central

Heating Y/N: 1

Pets Allowed: SizeLimit, Yes

View: Bay, City

View Y/N: 1

Waterfront Y/N: 1

Stories Total: 55

Rooms & Units Description

Unit Number: 3114

Location Details

County Or Parish: Miami-Dade

Elementary School: Wheatley; Phyllis

Middle/Junior School: de Diego; Jose

High School: Washington; Brooker T



Building Details

Architectural Style: HighRise

Covered Spaces: 1

Floor covering: Marble

Construction Materials: Block

Garage Spaces: 1

Amenities & Features

Pool Features: Association

Security Features:

DoorMan,ElevatorSecured,SecurityGuard,FireSprinklerSystem,SmokeDetectors

Waterfront Features: Bayfront

Window Features: ImpactGlass

Exterior Features: SecurityHighImpactDoors

Interior Features:

BedroomOnMainLevel,DiningArea,SeparateFormalDiningRoom,WalkInClosets,Bar

Parking Features: Assigned,Covered,OneSpace

Association Amenities:

Clubhouse,Elevators,FitnessCenter,Barbecue,PicnicArea,Pool,Sauna,SpaHotTub,TennisCourts,Trash

Utilities: CableAvailable

Cooling: CentralAir

Heating: Central

Appliances:

Dryer,Dishwasher,ElectricRange,Disposal,IceMaker,Microwave,Refrigerator,SelfCleaningOven,Washer

Nearby Schools

Middle Or Junior School: de Diego; Jose **Elementary School:** Wheatley; Phyllis

High School: Washington; Brooker T

Expenses, Fees & Taxes

Association Fee: \$2,015

Tax Year: 2023

Tax Annual Amount: \$6,881

Fees & Taxes

Association Fee: 2015

Miscellaneous



Association Fee Frequency: Monthly **List Office Name:** Brickell Brokers R.E.

Listing Terms: Cash,Conventional

Miscellaneous

Above Grade **Virtual Tour URL:**

Finished Area: <https://www.propertypanorama.com/instaview/mia/A11588519>
Miami, FL

Courtesy of

Office Name: Brickell Brokers R.E.

