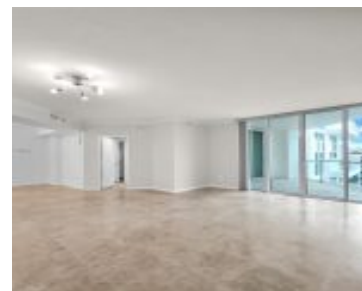


1819 17TH ST FORT LAUDERDALE FL 33316 1819 SE 17TH ST 1401

<https://www.cays.com>



THE PORT RESIDENCES UNIT 1401 Luxury high-rise w/spacious rooms, high ceilings, natural stone flooring and floor to ceiling windows. Larger than many 2 bedrooms + a 13' deep glass balcony. Bonus flex space ideal for office/media/guests. The generous bedroom suite opens to the balcony and features 2 walk-in closets. Bath features, Hansgrohe fixtures, double vanity, [...]

- 1 bed
- 1, 2 bath
- Condominium, Residential
- Condominium, Residential
- Active
- 1384 sq ft

Basics



Bathrooms Half: 1

Type: Condominium, Residential

Bedrooms: 1 bed

Half baths: 1 half bath

Area: 1384 sq ft

View: City,Garden

County: Broward

Category: Condominium, Residential

Status: Active

Bathrooms: 1, 2 bath

Floors: 16 floors

Year built: 2005

Subdivision Name: THE PORT RESIDENCES

Property details

Subdivision Name: THE PORT RESIDENCES

Parcel Number: 33316

Property Features

Waterfront Features: Other

Cooling: CentralAir,Other

Garage Y/N: 1

Heating Y/N: 1

View: City,Garden

Parking Features: Assigned,TwoOrMoreSpaces,Valet

Cooling Y/N: 1

Heating: Central

Pets Allowed: DogsOk,Yes

Stories Total: 16

Rooms & Units Description

Unit Number: 1401

Location Details

County Or Parish: Broward



Building Details

Architectural Style: HighRise

Covered Spaces: 2

Floor covering: Carpet, Marble

Construction Materials: Block,Other

Garage Spaces: 2

Amenities & Features

Parking Features: Assigned,TwoOrMoreSpaces,Valet

Patio & Porch Features: Balcony,Open

Waterfront Features: Other

Window Features: Blinds

Exterior Features:

Balcony,SecurityHighImpactDoors,TennisCourts

Heating: Central

Appliances:

Dryer,Dishwasher,ElectricRange,Microwave,Refrigerator,Washer

Security Features: KeyCardEntry,SmokeDetectors

Association Amenities:

BikeStorage,Clubhouse,Elevators,FitnessCenter,Sauna

Utilities: CableAvailable

Cooling: CentralAir,Other

Furnished: Unfurnished

Interior Features: DualSinks,FirstFloorEntry,Other

Expenses, Fees & Taxes

Association Fee: \$1,100

Tax Year: 2023

Tax Annual Amount: \$4,000

Fees & Taxes

Association Fee: 1100

Miscellaneous

Association Fee Frequency: Monthly

Listing Terms: Assumable

List Office Name: Douglas Elliman

Direction Faces: Southwest



Miscellaneous

Above Grade

Finished Area:
Fort Lauderdale, FL

Virtual Tour URL:

<https://www.propertypanorama.com/instaview/mia/A11372764>

Courtesy of

Office Name: Douglas Elliman

