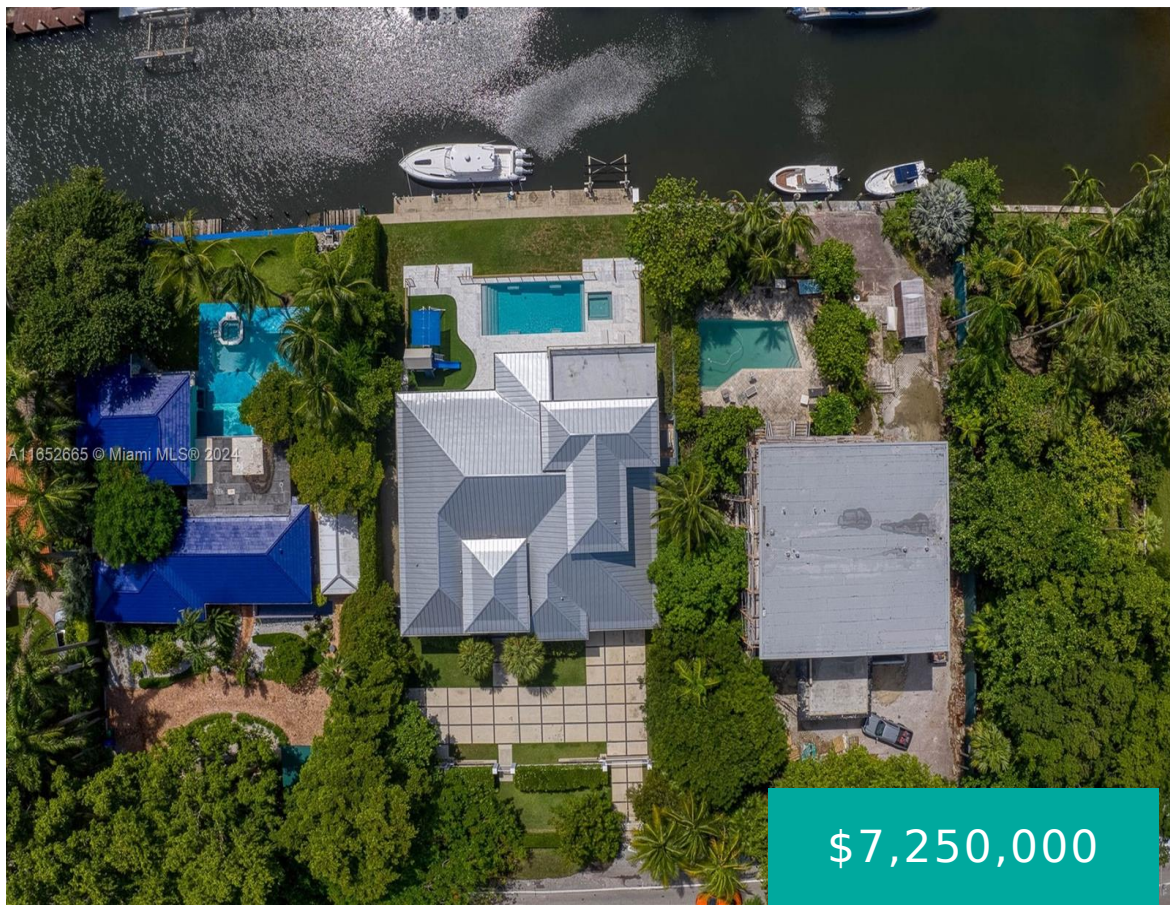


# 1820 BAYSHORE DR MIAMI FL 33133 1820 S BAYSHORE DR

<https://www.cays.com>



KLOEBER BAY FRONTS SEC 2 PB 4-196 LOT 4 LESS NWLY 10FT FOR R/W AND PROP INT IN & TO COMMON ELEMENTS NOT DEDICATED TO PUBLIC LOT SIZE 19000 S Spectacular home built in 2017 in N. Coconut Grove, w/ 100 ft water frontage & direct access to Biscayne Bay. Formal entry w/ 18ft soaring [...]

- 5 beds
- 4, 5 baths
- Residential, SingleFamilyResidence
- Residential, SingleFamilyResidence
- Active
- 3574 sq ft

## Basics



**Bathrooms Half:** 1

**Type:** Residential, SingleFamilyResidence

**Bedrooms:** 5 beds

**Half baths:** 1 half bath

**Area:** 3574 sq ft

**Year built:** 2017

**Subdivision Name:** KLOEBER BAY FRONTS SEC 2

**Category:** Residential, SingleFamilyResidence

**Status:** Active

**Bathrooms:** 4, 5 baths

**Floors:** 2 floors

**Lot size:** 19000, 19000 sq ft

**View:** Canal

**County:** Miami-Dade

---

## Property details

**Subdivision Name:** KLOEBER BAY FRONTS SEC 2 **Lot Size Square Feet:** 19000

**Parcel Number:** 33133

---

## Property Features

**Waterfront Features:**

CanalFront, NoFixedBridges, OceanAccess, Seawall

**Carport Y/N:** 1

**Cooling Y/N:** 1

**Heating Y/N:** 1

**Pets Allowed:** NoPetRestrictions, Yes

**View Y/N:** 1

**Stories:** 2

**Parking Features:**

AttachedCarport, Driveway, PaverBlock

**Cooling:** CentralAir, Electric

**Heating:** Central, Electric

**Spa Y/N:** 1

**View:** Canal

**Waterfront Y/N:** 1

---

## Location Details

**County Or Parish:** Miami-Dade

**Middle/Junior School:** Ponce De Leon

**Zoning Description:** 0100

**Elementary School:** Coconut Grove

**High School:** Coral Gables



---

## Building Details

**Water Source:** Public

**Lot Features:** QuarterToHalfAcreLot

**Construction Materials:** Block

**Levels:** Two

**Architectural Style:** Detached,TwoStory

**Sewer:** PublicSewer

**Covered Spaces:** 2

**Floor covering:** Other

---

### Amenities & Features

**Pool Features:** Heated,InGround,Pool

**Patio & Porch Features:** Balcony,Open,Patio

**Waterfront Features:**

CanalFront,NoFixedBridges,OceanAccess,Seawall

**Window Features:** Blinds,ImpactGlass

**Exterior Features:** Balcony,Fence,Lighting,OutdoorShower,Patio

**Heating:** Central,Electric

**Parking Features:** AttachedCarport,Driveway,PaverBlock

**Roof:** Metal

**Utilities:** CableAvailable

**Cooling:** CentralAir,Electric

**Furnished:** Unfurnished

**Interior Features:** BreakfastBar,BuiltInFeatures,BedroomOnMainLevel,ClosetCabinetry,DiningArea,SeparateFormalDiningRoom,DualSinks,EntranceFoyer,EatinKitchen,FirstFloorEntry,HighCeilings,MainLevelPrimary,SplitBedrooms,SeparateShower,WalkInClosets

**Appliances:**

BuiltInOven,Dryer,Dishwasher,GasRange,Microwave,Refrigerator,Washer

---

## Nearby Schools

**Middle Or Junior School:** Ponce De Leon

**High School:** Coral Gables

**Elementary School:** Coconut Grove

---

## Expenses, Fees & Taxes

**Tax Annual Amount:** \$58,350

**Tax Year:** 2023

---

## Miscellaneous

**List Office Name:** BHHS EWM Realty

**Direction Faces:** Northwest

**Listing Terms:** Cash,Conventional

---

## Miscellaneous

**Above Grade Finished Area:**

**Area:**

Miami, FL

**Virtual Tour URL:** [https://www.vr-360-tour.com/e/i-sBkbXRZ6g/e?hide\\_e3play=true&hide\\_logo=true&hide\\_nadir=true&hidelive=false](https://www.vr-360-tour.com/e/i-sBkbXRZ6g/e?hide_e3play=true&hide_logo=true&hide_nadir=true&hidelive=false)



---

# Courtesy of

**Office Name:** BHHS EWM Realty

