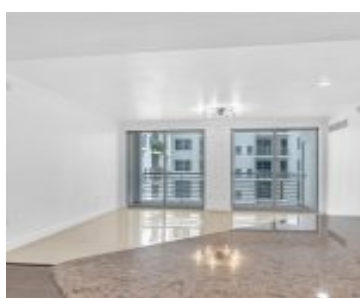


1830 RADIUS DR HOLLYWOOD FL 33020 1830 RADIUS DR 405

<https://www.cays.com>



\$355,000



RADIUS CONDO UNIT 405 PER CDO BK/PG: 44863/1541 This spacious 2-bedroom, 2-bathroom condo is move-in ready and showcases elegant porcelain and wood floors, granite countertops, and stainless steel appliances. The unit offers comfort and style in the heart of Downtown Hollywood—just steps from top-rated restaurants, vibrant bars, and scenic parks. Enjoy being just a 5-minute [...]

- 2 beds
- 2, 2 baths
- Condominium, Residential
- Condominium, Residential
- Active
- 1164 sq ft

Basics



Category: Condominium, Residential

Status: Active

Bathrooms: 2, 2 baths

Floors: 14 floors

Year built: 2007

Subdivision Name: RADIUS CONDO

Type: Condominium, Residential

Bedrooms: 2 beds

Half baths: 0 half baths

Area: 1164 sq ft

View: Garden,Other

County: Broward

Property details

Subdivision Name: RADIUS CONDO

Parcel Number: 33020

Property Features

Parking Features: Underground

Cooling Y/N: 1

Heating: Central

Pets Allowed: No

Stories Total: 14

Cooling: CentralAir

Garage Y/N: 1

Heating Y/N: 1

View: Garden,Other

Rooms & Units Description

Unit Number: 405

Location Details

County Or Parish: Broward

Elementary School: Hollywood Centl

High School: South Broward

Directions: Corner of US 1 and Polk St.

Middle/Junior School: Olsen



Building Details

Architectural Style: GardenApartment

Covered Spaces: 1

Floor covering: Carpet

Construction Materials: Block,Other

Garage Spaces: 1

Amenities & Features

Pool Features: Association

Security Features: DoorMan,SecurityGuard,SmokeDetectors

Cooling: CentralAir

Heating: Central

Appliances:

Dryer,Dishwasher,ElectricRange,Microwave,Refrigerator,Washer

Parking Features: Underground

Association Amenities:

BusinessCenter,Pool,Sauna

Exterior Features: None

Interior Features:

GardenTubRomanTub,Other,WalkInClosets

Nearby Schools

Middle Or Junior School: Olsen

High School: South Broward

Elementary School: Hollywood Centl

Expenses, Fees & Taxes

Association Fee: \$675

Tax Year: 2014

Tax Annual Amount: \$4,586

Fees & Taxes

Association Fee: 675



Miscellaneous

Association Fee Frequency: Monthly **List Office Name:** LPT Realty, LLC

Listing Terms: Cash,Conventional

Miscellaneous

Above Grade **Virtual Tour URL:**
Finished Area: <https://www.propertypanorama.com/instaview/mia/A11848061>
Hollywood, FL

Courtesy of

Office Name: LPT Realty, LLC

