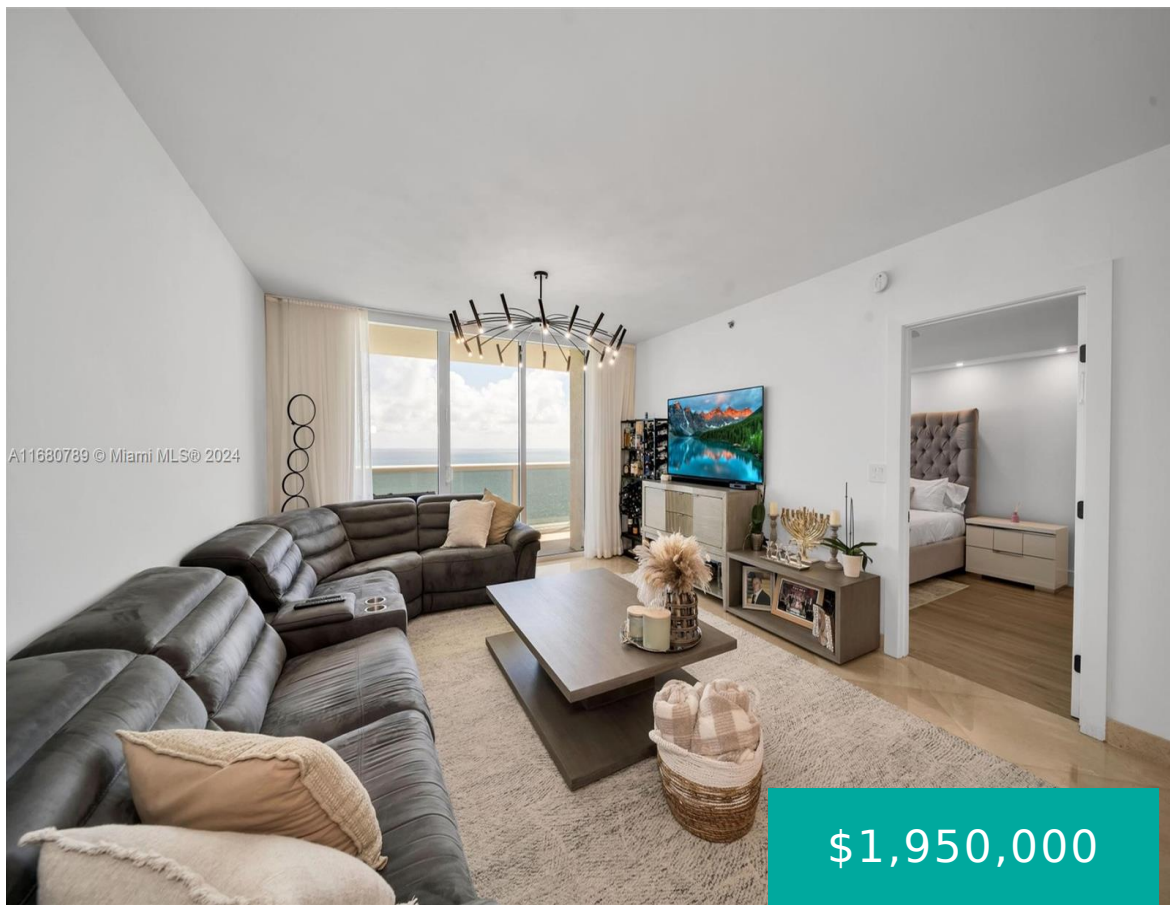


1850 OCEAN DR HALLANDALE BEACH FL 33009 1850 S OCEAN DR 3202

<https://www.cays.com>



THE BEACH CLUB CONDO UNIT 3202 PER CDO CIN# 104885375 Discover a rare gem with breathtaking direct ocean views that can be enjoyed from both inside and your spacious open balcony! This impeccably and renovated 3 bedrooms 3 bathrooms home features a flow-through floor plan designed for seamless living. Experience true resort-style living at the [...]

- 3 beds
- 3, 3 baths
- Condominium, Residential
- Condominium, Residential
- Active
- 1841 sq ft



Basics



Category: Condominium, Residential

Status: Active

Bathrooms: 3, 3 baths

Floors: 44 floors

Year built: 2005

Subdivision Name: BEACH CLUB I

Type: Condominium, Residential

Bedrooms: 3 beds

Half baths: 0 half baths

Area: 1841 sq ft

View: Ocean

County: Broward

Property details

Subdivision Name: BEACH CLUB I

Parcel Number: 33009

Property Features

Waterfront Features:

OceanAccess,OceanFront

Cooling: CentralAir,Electric

Garage Y/N: 1

Heating Y/N: 1

View: Ocean

Waterfront Y/N: 1

Parking Features:

Assigned,Attached,Garage,OneSpace,Valet

Cooling Y/N: 1

Heating: Central,Electric

Pets Allowed: SizeLimit,Yes

View Y/N: 1

Stories Total: 44

Rooms & Units Description

Unit Number: 3202

Location Details



County Or Parish: Broward

Directions: Take I-95 exit Hallandale Beach Blvd. Go East to A1A (S. Ocean Drive) The Beach Club is on the Ocean side.

Elementary School: Hallandale Elem **Middle/Junior School:** Gulfstream

High School: Hallandale High

Building Details

Construction Materials: Block

Covered Spaces: 2

Garage Spaces: 2

Floor covering: Marble, Other

Amenities & Features

Pool Features: Association,Heated

Security Features: ElevatorSecured,FireAlarm,LobbySecured

Association Amenities: FitnessCenter,Pool,Sauna,SpaHotTub,VehicleWashArea,Elevators

Utilities: CableAvailable

Cooling: CentralAir,Electric

Furnished: Unfurnished

Interior Features: BedroomOnMainLevel,ClosetCabinetry,DualSinks,KitchenIsland,LivingDiningRoom

Parking Features: Assigned,Attached,Garage,OneSpace,Valet

Patio & Porch Features: Balcony,Open

Waterfront Features: OceanAccess,OceanFront

Window Features: Blinds,Drapes,Sliding,ImpactGlass

Exterior Features: Balcony,SecurityHighImpactDoors

Heating: Central,Electric

Appliances: Dryer,Dishwasher,ElectricRange,Disposal,Microwave,Refrigerator,SelfCleaningOven,Washer

Nearby Schools

Middle Or Junior School: Gulfstream

Elementary School: Hallandale Elem

High School: Hallandale High

Expenses, Fees & Taxes

Association Fee: \$1,076

Tax Annual Amount: \$21,135

Tax Year: 2023

Fees & Taxes



Association Fee: 1076

Miscellaneous

Association Fee Frequency: Monthly **List Office Name:** Cervera Real Estate Inc

Listing Terms: Cash,Conventional **Direction Faces:** East

Miscellaneous

Above Grade **Virtual Tour URL:**
Finished Area: <https://www.propertypanorama.com/instaview/mia/A11680789>
Hallandale Beach,
FL

Courtesy of

Office Name: Cervera Real Estate Inc

