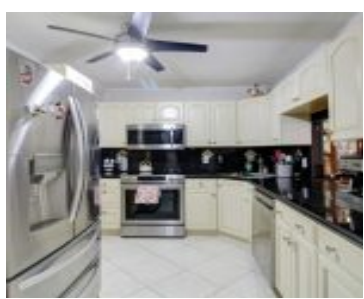


1865 OCEAN DR HALLANDALE BEACH FL 33009 1865 S OCEAN DR 4H

<https://www.cays.com>



PRINCE GEORGE ARMS CONDO UNIT 4H PER CDO BK/PG: 5924/623 Incredible Opportunity at the Prince George! Prime location just steps from the beach. This beautifully renovated and spacious 1-bedroom, 2-bath condo offers ocean views, a brand-new bathroom, and abundant closet space. Bright and open layout perfect for comfortable living. Resort-style amenities include 24/7 front desk [...]

- 1 bed
- 2, 2 baths
- Condominium, Residential
- Condominium, Residential
- Active
- 1300 sq ft

Basics



Category: Condominium, Residential

Status: Active

Bathrooms: 2, 2 baths

Floors: 24 floors

Year built: 1974

Subdivision Name: PRINCE GEORGE ARMS CONDO

Type: Condominium, Residential

Bedrooms: 1 bed

Half baths: 0 half baths

Area: 1300 sq ft

View: Other

County: Broward

Property details

Subdivision Name: PRINCE GEORGE ARMS CONDO

Parcel Number: 33009

Property Features

Waterfront Features: OceanFront

Cooling: CentralAir

Heating: Central

Pets Allowed: Conditional,No

Stories Total: 24

Parking Features: OneSpace

Cooling Y/N: 1

Heating Y/N: 1

View: Other

Rooms & Units Description

Unit Number: 4H

Location Details

County Or Parish: Broward

High School: Hallandale High

Building Details



Amenities & Features

Pool Features: Association,Heated

Security Features:

ComplexFenced,ElevatorSecured,FireAlarm,SecuredGarageParking,Other,PhoneEntry,SecurityGuard

Association Amenities:

BoatDock,Clubhouse,Elevators,FitnessCenter,Laundry,Barbecue,PicnicArea,Pool,Storage,TennisCourts

Window Features: ImpactGlass

Exterior Features: Balcony,TennisCourts

Interior Features:

BedroomOnMainLevel,EntranceFoyer,LivingDiningRoom,Pantry,TubShower,Elevator

Appliances: Dryer,Dishwasher,ElectricRange,Microwave,Refrigerator,Washer

Parking Features:
OneSpace

Patio & Porch Features:
Balcony,Open

Waterfront Features:
OceanFront

Cooling:
CentralAir

Heating:
Central

Laundry Features:
CommonArea

Nearby Schools

High School: Hallandale High

Expenses, Fees & Taxes

Association Fee: \$979

Tax Annual Amount: \$1,955

Tax Year: 2024

Fees & Taxes

Association Fee: 979



Miscellaneous

Association Fee Frequency: Monthly **List Office Name:** Realty One Group Plus

Listing Terms: Cash,Conventional

Miscellaneous

Above Grade

Finished Area:
Hallandale Beach,
FL

Virtual Tour URL:

<https://www.propertypanorama.com/instaview/mia/A11844642>

Courtesy of

Office Name: Realty One Group Plus

