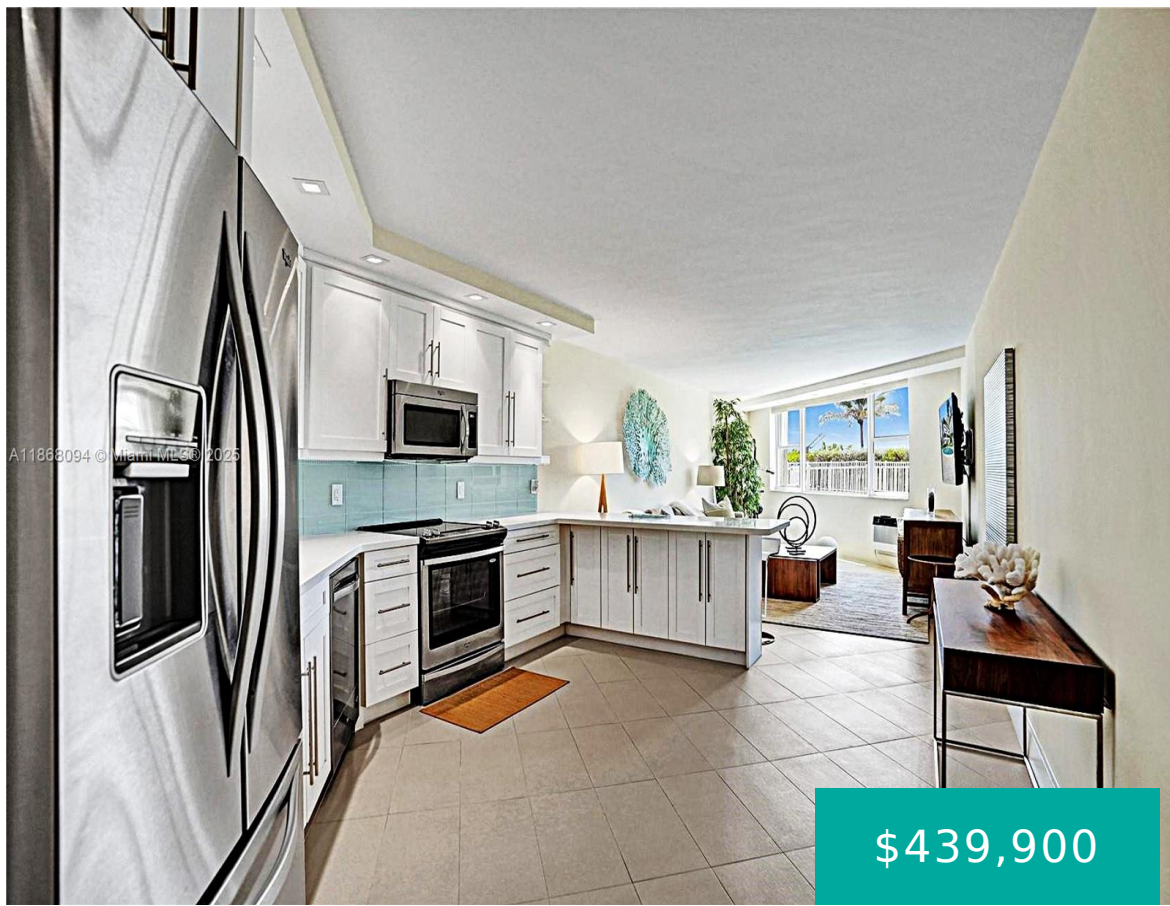


1936 OCEAN DR HALLANDALE BEACH FL 33009 1936 S OCEAN DR 21D

<https://www.cays.com>



\$439,900



TAROMINA APTS CO-OP UNIT 21D BLDG HAS PASSED BOTH 40/50/60 YEAR INSPECTIONS, LOW HOA, No assessments. LOCATION: Just step out your front door, sink your toes in the sand. Enjoy morning coffee at the pool, beautiful Sunsets & Sunrise views. This Stunningly undated Unit features 2 bright/spacious bedrooms & 1.5 updated bathrooms, step in shower. [...]

- 2 beds
- 1, 2 bath
- Residential, StockCooperative
- Residential, StockCooperative
- Active
- 1211 sq ft



Basics



Bathrooms Half: 1

Type: Residential, StockCooperative

Bedrooms: 2 beds

Half baths: 1 half bath

Area: 1211 sq ft

Property Condition: UpdatedRemodeled

Subdivision Name: TAROMINA APTS CO-OP

Category: Residential, StockCooperative

Status: Active

Bathrooms: 1, 2 bath

Floors: 4 floors

Year built: 1961

View: Garden,Ocean,Pool,Water

County: Broward

Property details

Subdivision Name: TAROMINA APTS CO-OP

Parcel Number: 33009

Property Features

Waterfront Features:

NoFixedBridges,OceanAccess,OceanFront

Cooling: Electric

Garage Y/N: 1

Heating Y/N: 1

View: Garden,Ocean,Pool,Water

Waterfront Y/N: 1

Parking Features:

Guest,OneSpace

Cooling Y/N: 1

Heating: Electric

Pets Allowed:

No,PetRestrictions

View Y/N: 1

Stories Total: 4

Rooms & Units Description

Unit Number: 21D

Location Details

County Or Parish: Broward

High School: Hallandale High



Building Details

Construction Materials: Block

Covered Spaces: 1

Garage Spaces: 1

Amenities & Features

Pool Features: Heated

Security Features: ComplexFenced

Waterfront Features:
NoFixedBridges,OceanAccess,OceanFront

Window Features: Blinds,ImpactGlass

Exterior Features:
SecurityHighImpactDoors,StormSecurityShutters

Heating: Electric

Laundry Features: CommonArea

Parking Features: Guest,OneSpace

Association Amenities: Elevators,Laundry,Pool,Trash

Utilities: CableAvailable

Cooling: Electric

Furnished: Unfurnished

Interior Features:
BedroomOnMainLevel,FirstFloorEntry,LivingDiningRoom,MainLivingAreaEntryLevel

Appliances: Dishwasher,ElectricRange,Microwave,Refrigerator

Nearby Schools

High School: Hallandale High

Expenses, Fees & Taxes

Association Fee: \$482

Tax Annual Amount: \$5,122

Tax Year: 2024

Fees & Taxes

Association Fee: 482

Miscellaneous



Association Fee Frequency: Monthly **List Office Name:** RE/MAX 5 Star Realty

Listing Terms: Cash

Miscellaneous

Above Grade

Virtual Tour URL:

Finished Area:

<https://www.propertypanorama.com/instaview/mia/A11868094>

Hallandale Beach,
FL

Courtesy of

Office Name: RE/MAX 5 Star Realty

