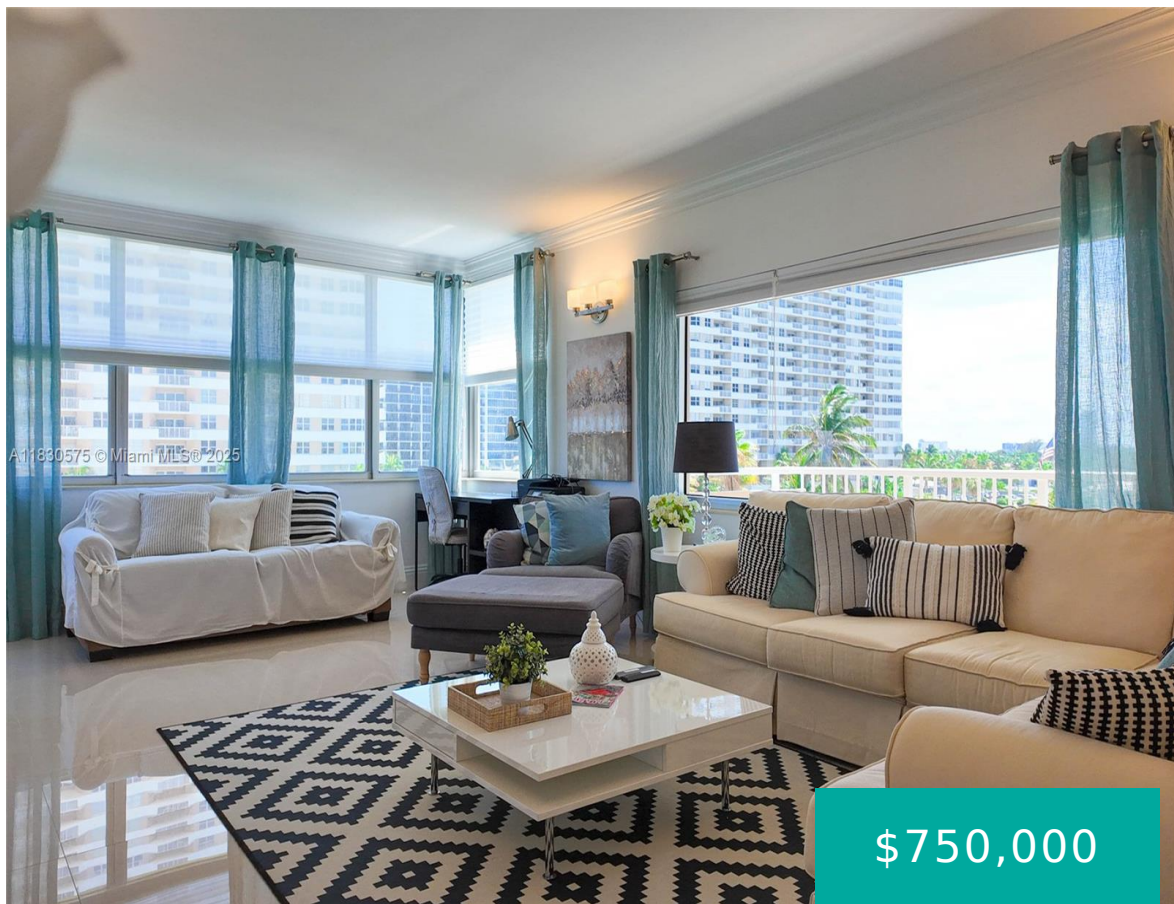


1950 OCEAN DR HALLANDALE BEACH FL 33009 1950 S OCEAN DR 4E

<https://www.cays.com>



THE HEMISPHERES CONDO UNIT 4 E OCEAN NORTH BLDG PER CDO BK/PG: 4165/352 Experience luxury in this stunning 3-bedroom, 2-bathroom corner unit at The Hemispheres. Featuring elegant porcelain flooring throughout, this spacious residence offers breathtaking views of the ocean, city, and Intracoastal. The west-facing balcony is perfect for sunsets, while the southwest corner exposure fills [...]

- 3 beds
- 2, 3 baths
- Condominium, Residential
- Condominium, Residential
- Active
- 1780 sq ft

Basics



Bathrooms Half: 1

Type: Condominium, Residential

Bedrooms: 3 beds

Half baths: 1 half bath

Area: 1780 sq ft

View: Intercoastal,Ocean

County: Broward

Category: Condominium, Residential

Status: Active

Bathrooms: 2, 3 baths

Floors: 23 floors

Year built: 1971

Subdivision Name: HEMISPHERES CONDO

Property details

Subdivision Name: HEMISPHERES CONDO

Parcel Number: 33009

Property Features

Waterfront Features: OceanAccess,OceanFront

Cooling: CentralAir

Garage Y/N: 1

Pets Allowed: No

View Y/N: 1

Stories Total: 23

Parking Features: Assigned,OneSpace,Valet

Cooling Y/N: 1

Heating: None

View: Intercoastal,Ocean

Waterfront Y/N: 1

Rooms & Units Description

Unit Number: 4E

Location Details

County Or Parish: Broward



Building Details

Architectural Style: HighRise

Covered Spaces: 1

Floor covering: CeramicTile

Construction Materials: Block

Garage Spaces: 1

Amenities & Features

Pool Features: Heated

Security Features:
KeyCardEntry,Other,SecurityGuard

Waterfront Features: OceanAccess,OceanFront

Exterior Features: SecurityHighImpactDoors

Interior Features:
BedroomOnMainLevel,EatInKitchen,LivingDiningRoom

Appliances: Dishwasher,ElectricRange,Refrigerator

Parking Features: Assigned,OneSpace,Valet

Association Amenities:
BilliardRoom,Marina,Elevators,FitnessCenter,Laundry,Pickleball,Pool,PuttingGreens,Sauna,TransportationService

Cooling: CentralAir

Heating: None

Laundry Features: CommonArea

Expenses, Fees & Taxes

Association Fee: \$1,601

Tax Year: 2024

Tax Annual Amount: \$11,993

Fees & Taxes

Association Fee: 1601

Miscellaneous

Association Fee Frequency: Monthly **List Office Name:** Compass Florida, LLC.

Listing Terms: Cash,Other

Miscellaneous



**Above Grade
Finished Area:**
Hallandale Beach,
FL

Virtual Tour URL:
<https://www.propertypanorama.com/instaview/mia/A11830575>

Courtesy of

Office Name: Compass Florida, LLC.

