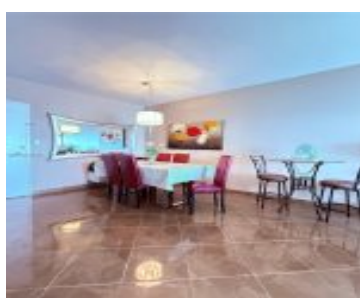


1950 OCEAN DR HALLANDALE BEACH FL 33009 1950 S OCEAN DR PHH

<https://www.cays.com>



THE HEMISPHERES CONDO UNIT PH H OCEAN NORTH BLDG PER CDO BK/PG:
4165/352 Amazing views ! 2 Bedrooms and 2 full Bath Condo in The Hemispheres North with impact windows. The Hemispheres has 2 pools, 2 gyms, private beach access, beach chair service, 2 Restaurants, tennis courts, basketball court, sauna, shuffle board, Marina with available [...]

- 2 beds
- 2, 2 baths
- Condominium, Residential
- Condominium, Residential
- Active
- 1240 sq ft

Basics



Category: Condominium, Residential
Status: Active
Bathrooms: 2, 2 baths
Floors: 23 floors
Year built: 1971
Subdivision Name: HEMISPHERES CONDO

Type: Condominium, Residential
Bedrooms: 2 beds
Half baths: 0 half baths
Area: 1240 sq ft
View: City, Intercoastal, Ocean
County: Broward

Property details

Subdivision Name: HEMISPHERES CONDO

Parcel Number: 33009

Property Features

Waterfront Features:
OceanAccess, OceanFront

Cooling: CentralAir

Garage Y/N: 1

Heating Y/N: 1

View: City, Intercoastal, Ocean

Waterfront Y/N: 1

Parking Features:
Assigned, Covered, OneSpace

Cooling Y/N: 1

Heating: HeatPump

Pets Allowed: Conditional, Yes

View Y/N: 1

Stories Total: 23

Rooms & Units Description

Unit Number: PHH

Location Details

County Or Parish: Broward



Building Details

Construction Materials: Block

Garage Spaces: 1

Covered Spaces: 1

Floor covering: CeramicTile

Amenities & Features

Pool Features: Association,Heated

Security Features: ComplexFenced,DoorMan,KeyCardEntry

Association Amenities:

BasketballCourt,BoatDock,BilliardRoom,Marina,Clubhouse,Elevators,Barbecue,PicnicArea,Pier,Pool,SpaHotTub,TennisCourts,TransportationService

Utilities: CableAvailable

Cooling: CentralAir

Heating: HeatPump

Appliances: Dishwasher,ElectricRange,Microwave,Refrigerator

Parking Features:
Assigned,Covered,OneSpace

Patio & Porch Features:
Balcony,Open

Waterfront Features:
OceanAccess,OceanFront

Window Features: ImpactGlass

Exterior Features:
Balcony,SecurityHighImpactDoors

Interior Features:
WalkInClosets

Expenses, Fees & Taxes

Association Fee: \$1,172

Tax Year: 2024

Tax Annual Amount: \$10,127

Fees & Taxes

Association Fee: 1172

Miscellaneous

Association Fee Frequency: Monthly **List Office Name:** Binter Real Estate

Listing Terms: Cash,Conventional

Miscellaneous



**Above Grade
Finished Area:**
Hallandale Beach,
FL

Virtual Tour URL:
<https://www.propertypanorama.com/instaview/mia/A11824583>

Courtesy of

Office Name: Binter Real Estate

