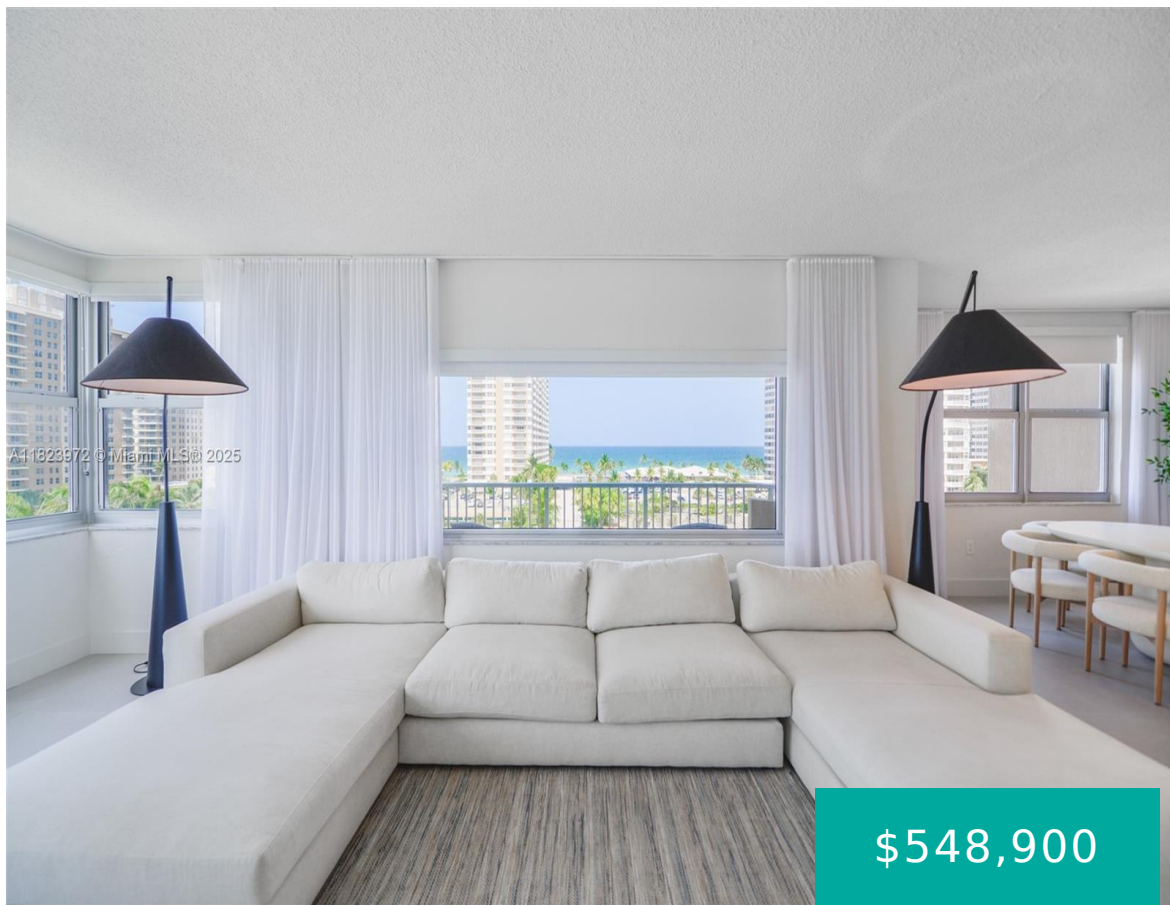


1965 OCEAN DR HALLANDALE BEACH FL 33009 1965 S OCEAN DR 6F

<https://www.cays.com>



\$548,900



THE HEMISPHERES CONDO UNIT 6 F BAY NORTH BLDG PER CDO BK/PG:
4165/352 AMAZING DIRECT OCEAN 2 BEDROOM 2 BATH UNIT.COMPLETLY
REMODELED BEAUTIFUL FLOORS OPEN KITCHEN GREAT FLOW THRU UNIT
IMPACT WINDOWS AND DOOR ENJOY THE BEST OF BOTH WORLDS DIRECT
OCEAN BEAUTIFUL INTRACOASTAL VIEWS .DONT MISS THIS OPPORTUNITY AT
THIS PRICE HEMISPHERES OFFERS BEACH [...]

- 2 beds
- 2, 2 baths
- Condominium, Residential
- Condominium, Residential
- Active
- 1275 sq ft

Basics



Category: Condominium, Residential
Status: Active
Bathrooms: 2, 2 baths
Floors: 22 floors
Year built: 1970
Subdivision Name: HEMISPHERES CONDO

Type: Condominium, Residential
Bedrooms: 2 beds
Half baths: 0 half baths
Area: 1275 sq ft
View: Intercoastal,Ocean
County: Broward

Property details

Subdivision Name: HEMISPHERES CONDO

Parcel Number: 33009

Property Features

Waterfront Features: IntracoastalAccess

Cooling: CentralAir

Garage Y/N: 1

Pets Allowed: No

View Y/N: 1

Stories Total: 22

Parking Features: Assigned,OneSpace

Cooling Y/N: 1

Heating: None

View: Intercoastal,Ocean

Waterfront Y/N: 1

Rooms & Units Description

Unit Number: 6F

Location Details

County Or Parish: Broward



Building Details

Architectural Style: HighRise

Covered Spaces: 1

Floor covering: Tile

Construction Materials: Block

Garage Spaces: 1

Amenities & Features

Pool Features: Heated

Security Features: KeyCardEntry,SecurityGuard

Association Amenities:

BilliardRoom,Marina,FitnessCenter,Laundry,Other,Pool,PuttingGreens,TennisCourts,TransportationService,Elevators

Window Features: ImpactGlass

Exterior Features: Balcony,SecurityHighImpactDoors

Interior Features: BedroomOnMainLevel,KitchenIsland

Appliances: Dishwasher,ElectricRange,Microwave,Refrigerator

Parking Features:
Assigned,OneSpace

Patio & Porch Features:
Balcony,Open

Waterfront Features:
IntracoastalAccess

Cooling:
CentralAir

Heating: None

Laundry Features:
CommonArea

Expenses, Fees & Taxes

Association Fee: \$1,240

Tax Year: 2024

Tax Annual Amount: \$8,705

Fees & Taxes

Association Fee: 1240

Miscellaneous



Association Fee Frequency: Monthly

Listing Terms: Cash,Other

List Office Name: Compass Florida, LLC.

Attribution Contact: 305-321-7889

Miscellaneous

Above Grade

Finished Area:
Hallandale Beach,
FL

Virtual Tour URL:

<https://www.propertypanorama.com/instaview/mia/A11823972>

Courtesy of

Office Name: Compass Florida, LLC.

