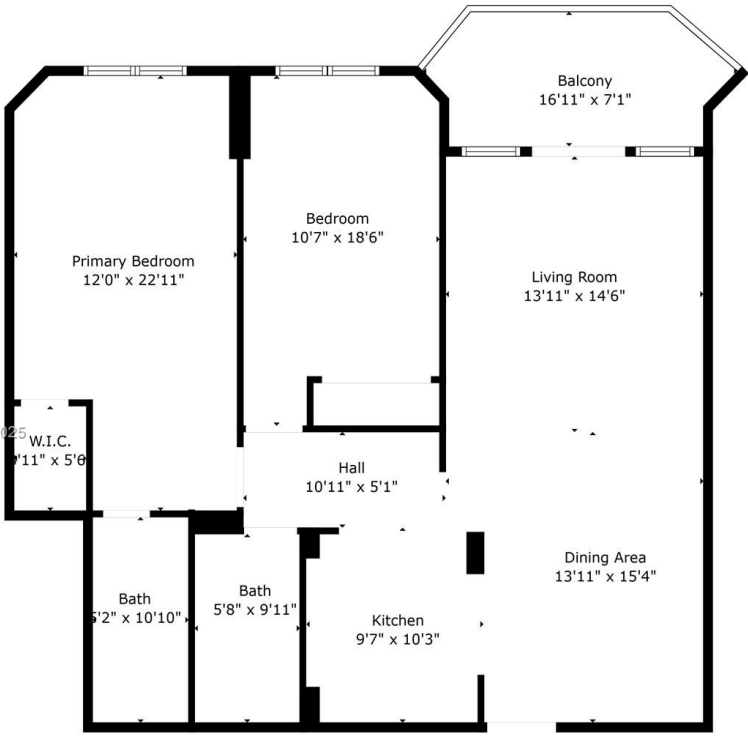


# 1980 OCEAN DR HALLANDALE BEACH FL 33009 1980 S OCEAN DR 19H

<https://www.cays.com>



A11798300 © Miami MLS® 2025



TOTAL: 1158 sq. ft  
FLOOR 1: 1158 sq. ft  
EXCLUDED AREAS: BALCONY: 101 sq. ft

Floor Plan Created By Cubicasa App. Measurements Deemed Highly Reliable But Not Guaranteed.

**\$895,000**



THE HEMISPHERES CONDO UNIT 19 H OCEAN SOUTH BLDG PER CDO BK/PG: 4165/352 Fully renovated 2BR/2BA beachfront condo with stunning views and direct beach access. This move-in-ready unit features a large layout, quartz countertops, stainless steel appliances, wide-plank flooring, Hurricane impact windows and doors, ambient lighting and modern finishes throughout. The spacious primary suite includes [...]

- 2 beds
- 2, 2 baths
- Condominium, Residential
- Condominium, Residential
- Active
- 1240 sq ft

## Basics



**Category:** Condominium, Residential  
**Status:** Active  
**Bathrooms:** 2, 2 baths  
**Floors:** 23 floors  
**Year built:** 1971  
**Subdivision Name:** HEMISPHERES CONDO

**Type:** Condominium, Residential  
**Bedrooms:** 2 beds  
**Half baths:** 0 half baths  
**Area:** 1240 sq ft  
**View:** City,Ocean,Other  
**County:** Broward

---

## Property details

**Subdivision Name:** HEMISPHERES CONDO

**Parcel Number:** 33009

---

## Property Features

**Waterfront Features:** OceanAccess,OceanFront

**Cooling:** CentralAir

**Garage Y/N:** 1

**Pets Allowed:** No

**View Y/N:** 1

**Stories Total:** 23

**Parking Features:** OneSpace,Valet

**Cooling Y/N:** 1

**Heating:** Other

**View:** City,Ocean,Other

**Waterfront Y/N:** 1

---

## Rooms & Units Description

**Unit Number:** 19H

---

## Location Details

**County Or Parish:** Broward

**Directions:** GPS



---

## Building Details

**Architectural Style:** HighRise

**Covered Spaces:** 1

**Floor covering:** Tile

**Construction Materials:** Block

**Garage Spaces:** 1

---

## Amenities & Features

**Pool Features:** Association

**Security Features:**  
ComplexFenced,DoorMan,KeyCardEntry

**Waterfront Features:**  
OceanAccess,OceanFront

**Exterior Features:**  
SecurityHighImpactDoors

**Interior Features:** Other

**Parking Features:** OneSpace,Valet

**Association Amenities:** Clubhouse,Pool,Sauna,TennisCourts

**Cooling:** CentralAir

**Heating:** Other

**Appliances:**  
Dishwasher,ElectricRange,Disposal,IceMaker,Microwave,Refrigerator

---

## Expenses, Fees & Taxes

**Association Fee:** \$1,175

**Tax Year:** 2024

**Tax Annual Amount:** \$9,699

---

## Fees & Taxes

**Association Fee:** 1175

---

## Miscellaneous

**Association Fee Frequency:** Monthly

**Listing Terms:** Cash,Conventional

**List Office Name:** LoKation

**Attribution Contact:** 954-789-0104



---

## Miscellaneous

**Above Grade Finished Area:** Hallandale Beach, FL

---

## Courtesy of

**Office Name:** LoKation

